

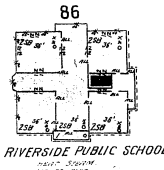
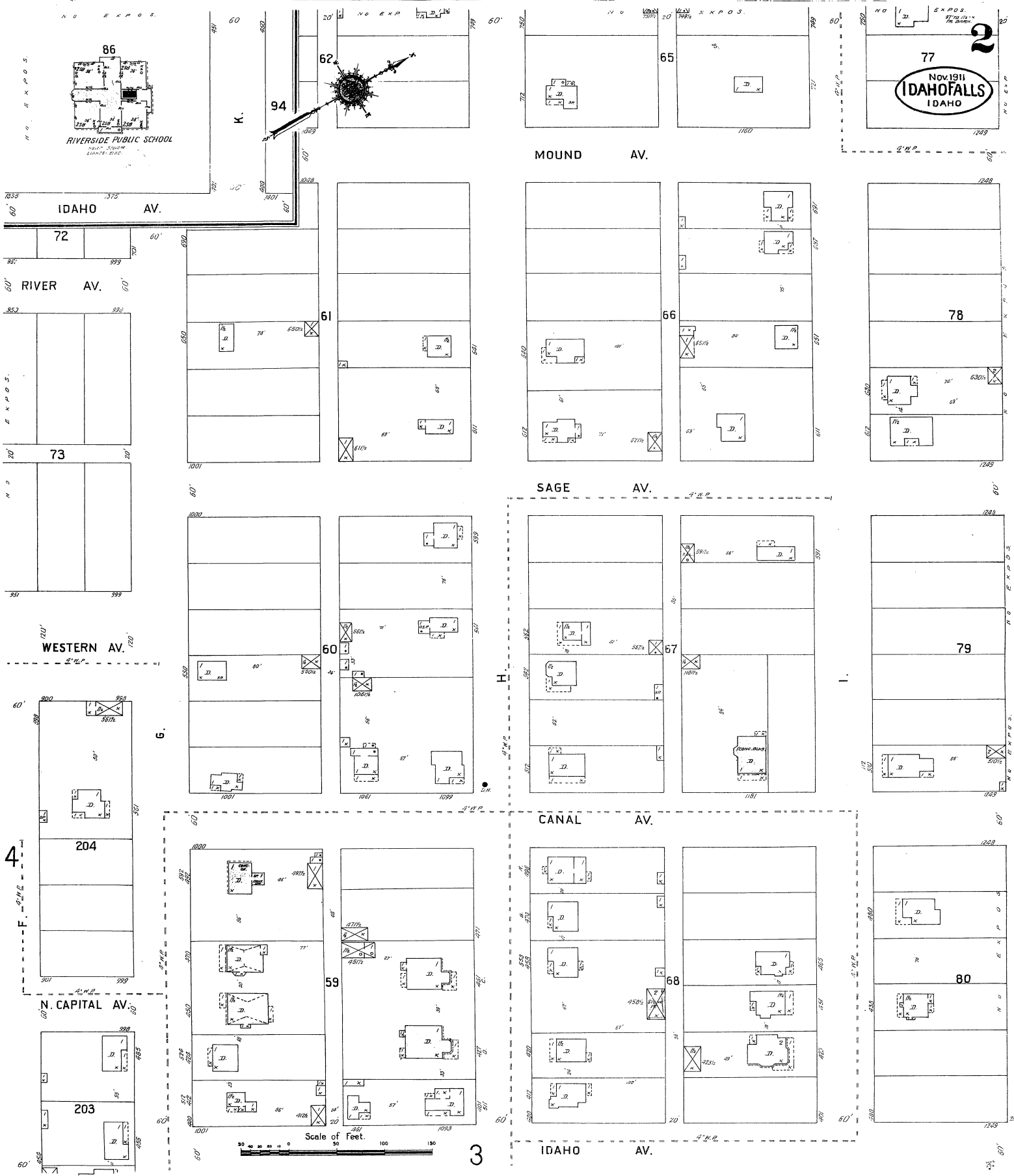


C. D. F. 29270

LINCOLN

INDEX.

STREETS.	R.	INDEX.
A	100-208	12
B	101-209	8
C	102-210	12
D	103-211	12
E	104-212	12
F	105-213	12
G	106-214	12
H	107-215	12
I	108-216	12
J	109-217	12
K	110-218	12
L	111-219	12
M	112-220	12
N	113-221	12
O	114-222	12
P	115-223	12
Q	116-224	12
R	117-225	12
S	118-226	12
T	119-227	12
U	120-228	12
V	121-229	12
W	122-230	12
X	123-231	12
Y	124-232	12
Z	125-233	12
AA	126-234	12
AB	127-235	12
AC	128-236	12
AD	129-237	12
AE	130-238	12
AF	131-239	12
AG	132-240	12
AH	133-241	12
AI	134-242	12
AJ	135-243	12
AK	136-244	12
AL	137-245	12
AM	138-246	12
AN	139-247	12
AO	140-248	12
AP	141-249	12
AQ	142-250	12
AR	143-251	12
AS	144-252	12
AT	145-253	12
AV	146-254	12
AW	147-255	12
AX	148-256	12
AY	149-257	12
AZ	150-258	12
BA	151-259	12
BB	152-260	12
BC	153-261	12
BD	154-262	12
BE	155-263	12
BF	156-264	12
BG	157-265	12
BH	158-266	12
BI	159-267	12
BJ	160-268	12
BK	161-269	12
BL	162-270	12
BM	163-271	12
BN	164-272	12
BO	165-273	12
BP	166-274	12
BQ	167-275	12
BR	168-276	12
BS	169-277	12
BT	170-278	12
BU	171-279	12
BV	172-280	12
BW	173-281	12
BX	174-282	12
BY	175-283	12
BZ	176-284	12
CA	177-285	12
CB	178-286	12
CC	179-287	12
CD	180-288	12
CE	181-289	12
CF	182-290	12
CG	183-291	12
CH	184-292	12
CI	185-293	12
CJ	186-294	12
CK	187-295	12
CL	188-296	12
CM	189-297	12
CN	190-298	12
CO	191-299	12
CP	192-300	12
CQ	193-301	12
CR	194-302	12
CS	195-303	12
CT	196-304	12
CU	197-305	12
CV	198-306	12
CW	199-307	12
CX	200-308	12
CY	201-309	12
CZ	202-310	12
DA	203-311	12
DB	204-312	12
DC	205-313	12
DD	206-314	12
DE	207-315	12
DF	208-316	12
DG	209-317	12
DH	210-318	12
DI	211-319	12
DJ	212-320	12
DK	213-321	12
DL	214-322	12
DM	215-323	12
DN	216-324	12
DO	217-325	12
DP	218-326	12
DQ	219-327	12
DR	220-328	12
DS	221-329	12
DT	222-330	12
DU	223-331	12
DV	224-332	12
DW	225-333	12
DX	226-334	12
DY	227-335	12
DZ	228-336	12
EA	229-337	12
EB	230-338	12
EC	231-339	12
ED	232-340	12
EE	233-341	12
EF	234-342	12
EG	235-343	12
EH	236-344	12
EI	237-345	12
EJ	238-346	12
EK	239-347	12
EL	240-348	12
EM	241-349	12
EN	242-350	12
EO	243-351	12
EP	244-352	12
EQ	245-353	12
ER	246-354	12
ES	247-355	12
ET	248-356	12
EU	249-357	12
EV	250-358	12
EW	251-359	12
EX	252-360	12
EY	253-361	12
EZ	254-362	12
FA	255-363	12
FB	256-364	12
FC	257-365	12
FD	258-366	12
FE	259-367	12
FF	260-368	12
FG	261-369	12
FH	262-370	12
FI	263-371	12
FJ	264-372	12
FK	265-373	12
FL	266-374	12
FM	267-375	12
FN	268-376	12
FO	269-377	12
FP	270-378	12
FOURTEENTH	100-208	12
FIFTEENTH	101-209	12
SIXTEENTH	102-210	12
SEVENTEENTH	103-211	12
EIGHTEENTH	104-212	12
NINETEENTH	105-213	12
TWENTIETH	106-214	12
WENTY-FIRST	107-215	12
WENTY-SECOND	108-216	12
WENTY-THIRD	109-217	12
WENTY-FOURTH	110-218	12
WENTY-FIFTH	111-219	12
WENTY-SIXTH	112-220	12
WENTY-SEVENTH	113-221	12
WENTY-EIGHTH	114-222	12
WENTY-NINTH	115-223	12
THIRTIETH	116-224	12
THIRTY-FIRST	117-225	12
THIRTY-SECOND	118-226	12
THIRTY-THIRD	119-227	12
THIRTY-FOURTH	120-228	12
THIRTY-FIFTH	121-229	12
THIRTY-SIXTH	122-230	12
THIRTY-SEVENTH	123-231	12
THIRTY-EIGHTH	124-232	12
THIRTY-NINTH	125-233	12
FOURTY	126-234	12
FOURTY-FIRST	127-235	12
FOURTY-SECOND	128-236	12
FOURTY-THIRD	129-237	12
FOURTY-FOURTH	130-238	12
FOURTY-FIFTH	131-239	12
FOURTY-SIXTH	132-240	12
FOURTY-SEVENTH	133-241	12
FOURTY-EIGHTH	134-242	12
FOURTY-NINTH	135-243	12
FIFTY	136-244	12
FIFTY-FIRST	137-245	12
FIFTY-SECOND	138-246	12
FIFTY-THIRD	139-247	12
FIFTY-FOURTH	140-248	12
FIFTY-FIFTH	141-249	12
FIFTY-SIXTH	142-250	12
FIFTY-SEVENTH	143-251	12
FIFTY-EIGHTH	144-252	12
FIFTY-NINTH	145-253	12
SIXTY	146-254	12
SIXTY-FIRST	147-255	12
SIXTY-SECOND	148-256	12
SIXTY-THIRD	149-257	12
SIXTY-FOURTH	150-258	12
SIXTY-FIFTH	151-259	12
SIXTY-SIXTH	152-260	12
SIXTY-SEVENTH	153-261	12
SIXTY-EIGHTH	154-262	12
SIXTY-NINTH	155-263	12
SEVENTY	156-264	12
SEVENTY-FIRST	157-265	12
SEVENTY-SECOND	158-266	12
SEVENTY-THIRD	159-267	12
SEVENTY-FOURTH	160-268	12
SEVENTY-FIFTH	161-269	12
SEVENTY-SIXTH	162-270	12
SEVENTY-SEVENTH	163-271	12
SEVENTY-EIGHTH	164-272	12
SEVENTY-NINTH	165-273	12
EIGHTY	166-274	12
EIGHTY-FIRST	167-275	12
EIGHTY-SECOND	168-276	12
EIGHTY-THIRD	169-277	12
EIGHTY-FOURTH	170-278	12
EIGHTY-FIFTH	171-279	12
EIGHTY-SIXTH	172-280	12
EIGHTY-SEVENTH	173-281	12
EIGHTY-EIGHTH	174-282	12
EIGHTY-NINTH	175-283	12
NINETY	176-284	12
NINETY-FIRST	177-285	12
NINETY-SECOND	178-286	12
NINETY-THIRD	179-287	12
NINETY-FOURTH	180-288	12
NINETY-FIFTH	181-289	12
NINETY-SIXTH	182-290	12
NINETY-SEVENTH	183-291	12
NINETY-EIGHTH	184-292	12
NINETY-NINTH	185-293	12
HUNDRED	186-294	12
HUNDRED AND ONE	187-295	12
HUNDRED AND TWO	188-296	12
HUNDRED AND THREE	189-297	12
HUNDRED AND FOUR	190-298	12
HUNDRED AND FIVE	191-299	12
HUNDRED AND SIX	192-300	12
HUNDRED AND SEVEN	193-301	12
HUNDRED AND EIGHT	194-302	12
HUNDRED AND NINE	195-303	12
HUNDRED AND TEN	196-304	12
HUNDRED AND ELEVEN	197-305	12
HUNDRED AND TWELVE	198-306	12
HUNDRED AND THIRTEEN	199-307	12
HUNDRED AND FOURTEEN	200-308	12
HUNDRED AND FIFTEEN	201-309	12
HUNDRED AND SIXTEEN	202-310	12
HUNDRED AND SEVENTEEN	203-311	12
HUNDRED AND EIGHTEEN	204-312	12
HUNDRED AND NINETEEN	205-313	12
HUNDRED AND TWENTY	206-314	12
HUNDRED AND TWENTY-ONE	207-315	12
HUNDRED AND TWENTY-TWO	208-316	12
HUNDRED AND TWENTY-THREE	209-317	12
HUNDRED AND TWENTY-FOUR	210-318	12
HUNDRED AND TWENTY-FIVE	211-319	12
HUNDRED AND TWENTY-SIX	212-320	12
HUNDRED AND TWENTY-SEVEN	213-321	12
HUNDRED AND TWENTY-EIGHT	214-322	12
HUNDRED AND TWENTY-NINE	215-323	12
HUNDRED AND THIRTY	216-324	12
HUNDRED AND THIRTY-ONE	217-325	12
HUNDRED AND THIRTY-TWO	218-326	12
HUNDRED AND THIRTY-THREE	219-327	12
HUNDRED AND THIRTY-FOUR	220-328	12
HUNDRED AND THIRTY-FIVE	221-329	12
HUNDRED AND THIRTY-SIX	222-330	12
HUNDRED AND THIRTY-SEVEN	223-331	12
HUNDRED AND THIRTY-EIGHT	224-332	12
HUNDRED AND THIRTY-NINE	225-333	12
HUNDRED AND FORTY	226-334	12
HUNDRED AND FORTY-ONE	227-335	12
HUNDRED AND FORTY-TWO	228-336	12
HUNDRED AND FORTY-THREE	229-337	12
HUNDRED AND FORTY-FOUR	230-338	12
HUNDRED AND FORTY-FIVE	231-339	12
HUNDRED AND FORTY-SIX	232-340	12
HUNDRED AND FORTY-SEVEN	233-341	12
HUNDRED AND FORTY-EIGHT	234-342	12
HUNDRED AND FORTY-NINE	235-343	12
HUNDRED AND FIFTY	236-344	12
HUNDRED AND FIFTY-ONE	237-345	12
HUNDRED AND FIFTY-TWO	238-346	12
HUNDRED AND FIFTY-THREE	239-347	12
HUNDRED AND FIFTY-FOUR	240-348	12
HUNDRED AND FIFTY-FIVE	241-349	12
HUNDRED AND FIFTY-SIX	242-350	12
HUNDRED AND FIFTY-SEVEN	243-351	12
HUNDRED AND FIFTY-EIGHT	244-352	12
HUNDRED AND FIFTY-NINE	245-353	12
HUNDRED AND SIXTY	246-354	12
HUNDRED AND SIXTY-ONE	247-355	12
HUNDRED AND SIXTY-TWO	248-356	12
HUNDRED AND SIXTY-THREE	249-357	12
HUNDRED AND SIXTY-FOUR	250-35	



IDAHO AV.

RIVER AV.

73

WESTERN AV.

204

N. CAPITAL AV.

203

4

F.

H.

6

3

3

3

3

3

3

3

3

3

3

3

3

3

3

3

3

3

3

3

3

3

3

3

3

3

3

3

3

3

3

3

3

3

3

3

3

3

3

3

3

3

3

3

3

3

3

3

3

3

3

3

3

3

3

3

3

3

3

3

3

3

3

3

3

3

3

3

3

3

3

3

3

3

3

3

3

3

3

3

3

3

3

3

3

3

3

3

3

3

3

3

3

3

3

3

3

3

3

3

3

3

3

3

3

3

3

3

3

3

3

3

3

3

3

3

3

3

3

3

3

3

3

3

3

3

3

3

3

3

3

3

3

3

3

3

3

3

3

3

3

3

3

3

3

3

3

3

3

3

3

3

3

3

3

3

3

3

3

3

3

3

3

3

3

3

3

3

3

3

3

3

3

3

3

3

3

3

3

3

3

3

3

3

3

3

3

3

3

3

3

3

3

3

3

3

3

3

3

3

3

3

3

3

3

3

3

3

3

3

3

3

3

3

3

3

3

3

3

3

3

3

3

3

3

3

3

3

3

3

3

3

3

3

3

3

3

3

3

3

3

3

3

3

3

3

3

3

3

3

3

3

3

3

3

3

3

3

3

3

3

3

3

3

3

3

3

3

3

3

3

3

3

3

3

3

3

3

3

3

3

3

3

3

3

3

3

3

3

3

3

3

3

3

3

3

3

3

3

3

3

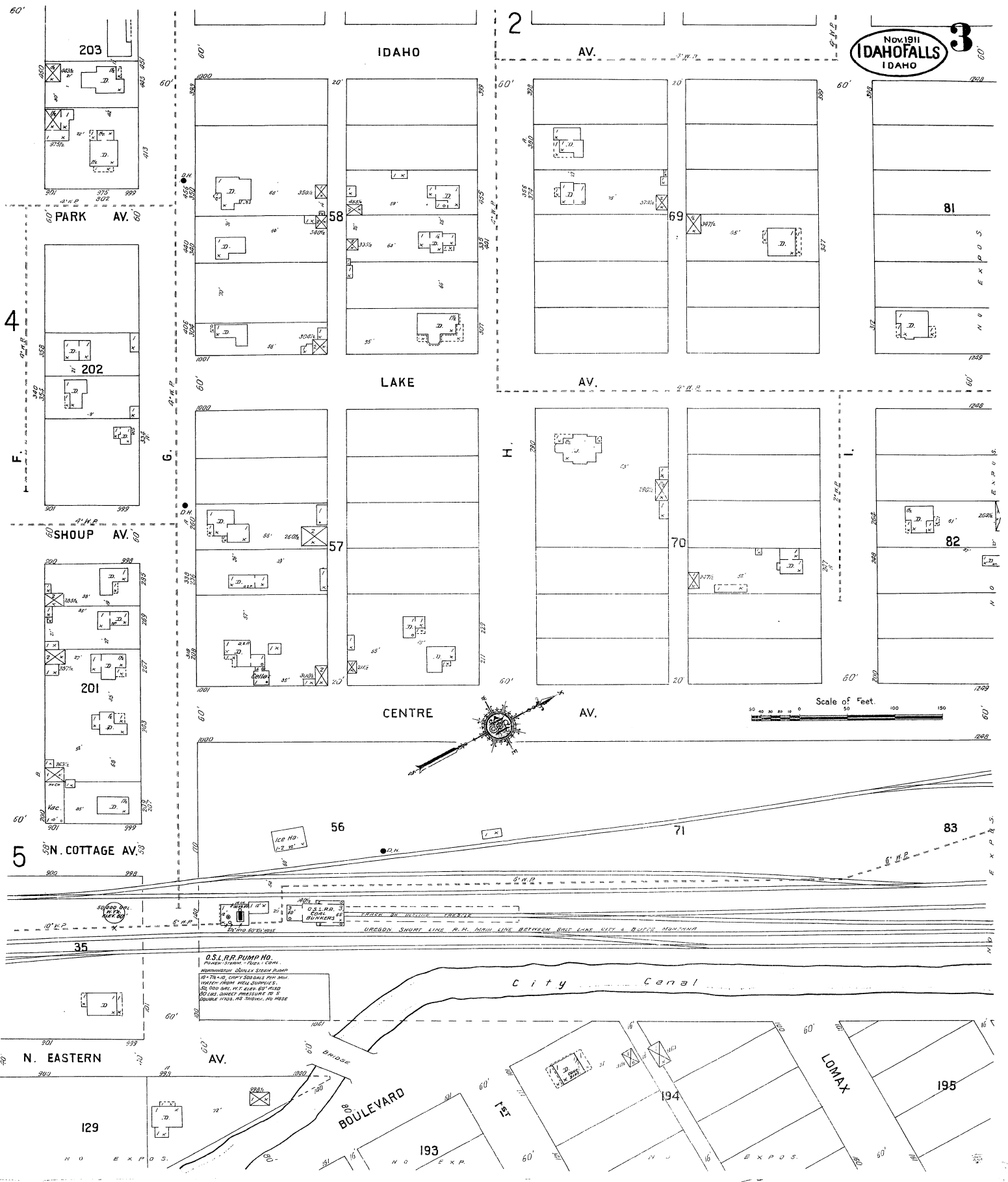
3

3

3

3

Nov. 1911
IDAHO FALLS
IDAHO



Scale of Feet
0 50 100 150

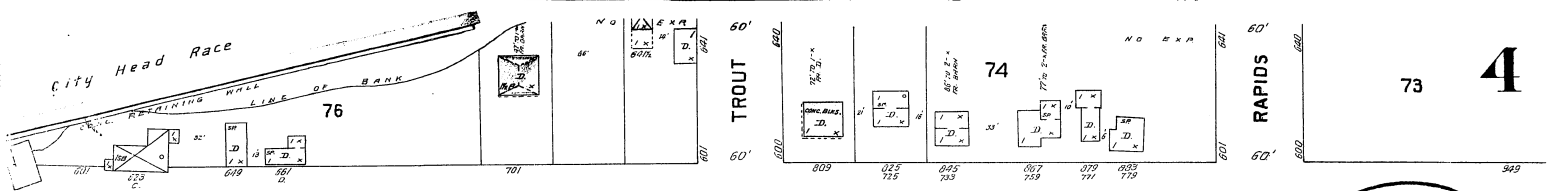
O.S.L.R. PUMP HO.
PUMP STATION - FURN. COMP.
10" DIA. COPPER BRASS PIPE
WATER MAIN HEAD SURFIC'S
50' DIA. HO. NOT CLEAR OF ROAD
NO GAS DIRECT PRESSURE TO S
SOURCE FROM THE STATION ON HERE

OREGON SHORT LINE R.R. MAIN LINE BETWEEN BOLD LINE CITY & BULLY MOUNTAIN

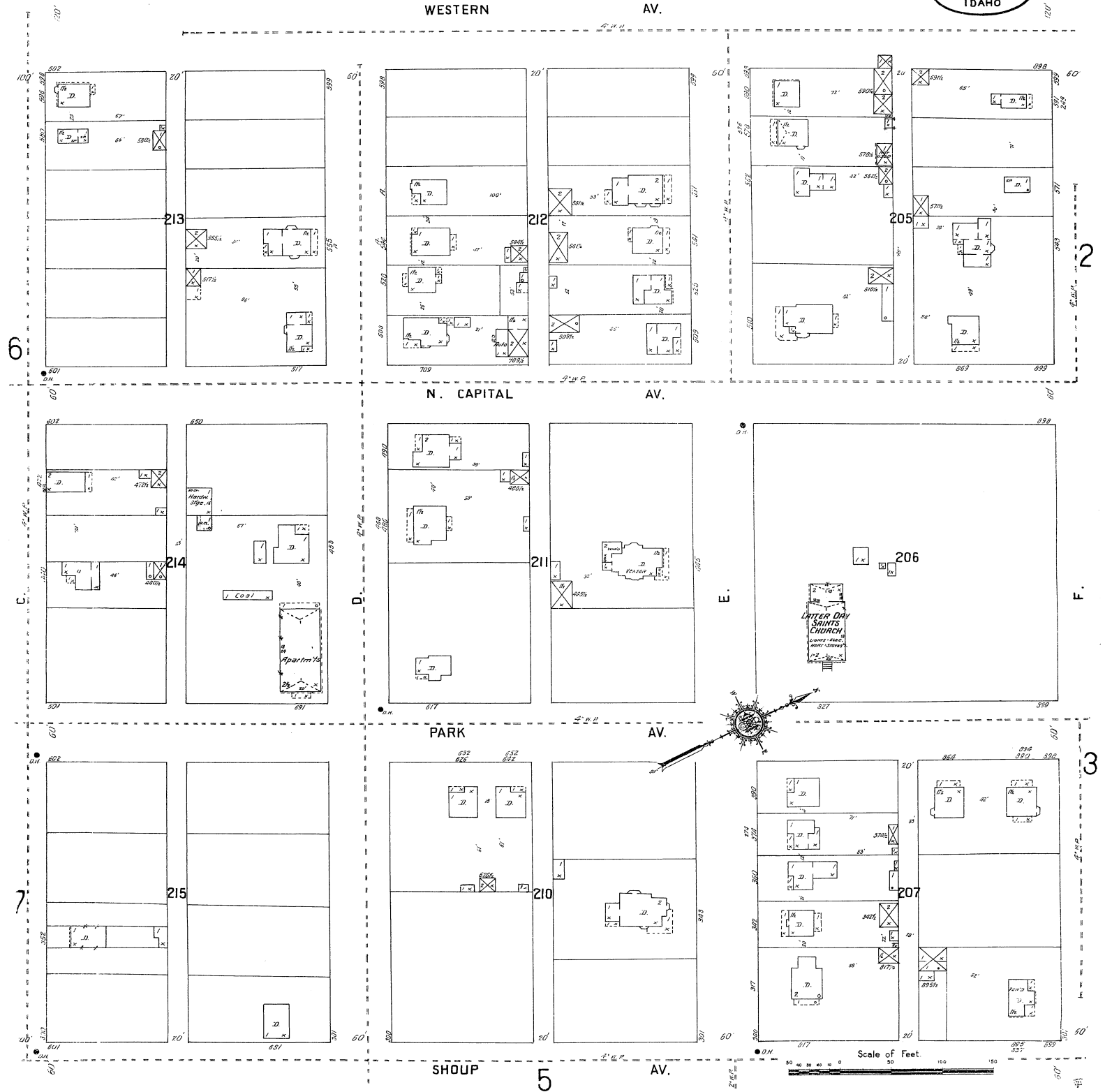
City Canal

BOULEVARD

LDMAX



NOV 1911
IDAHO FALLS
 IDAHO



Scale of Feet
 50 100 150 200

6

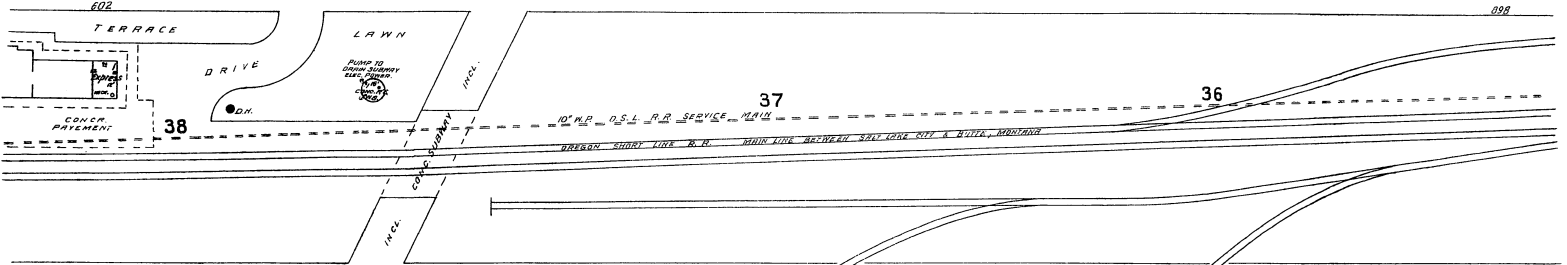
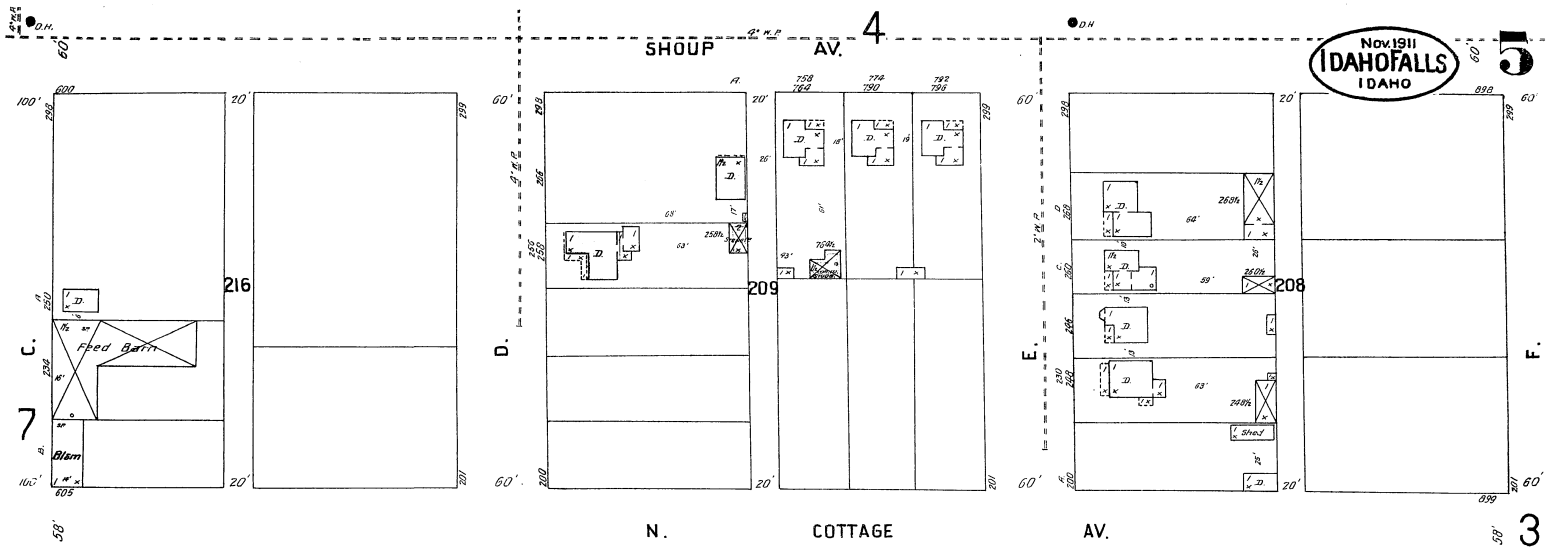
2

3

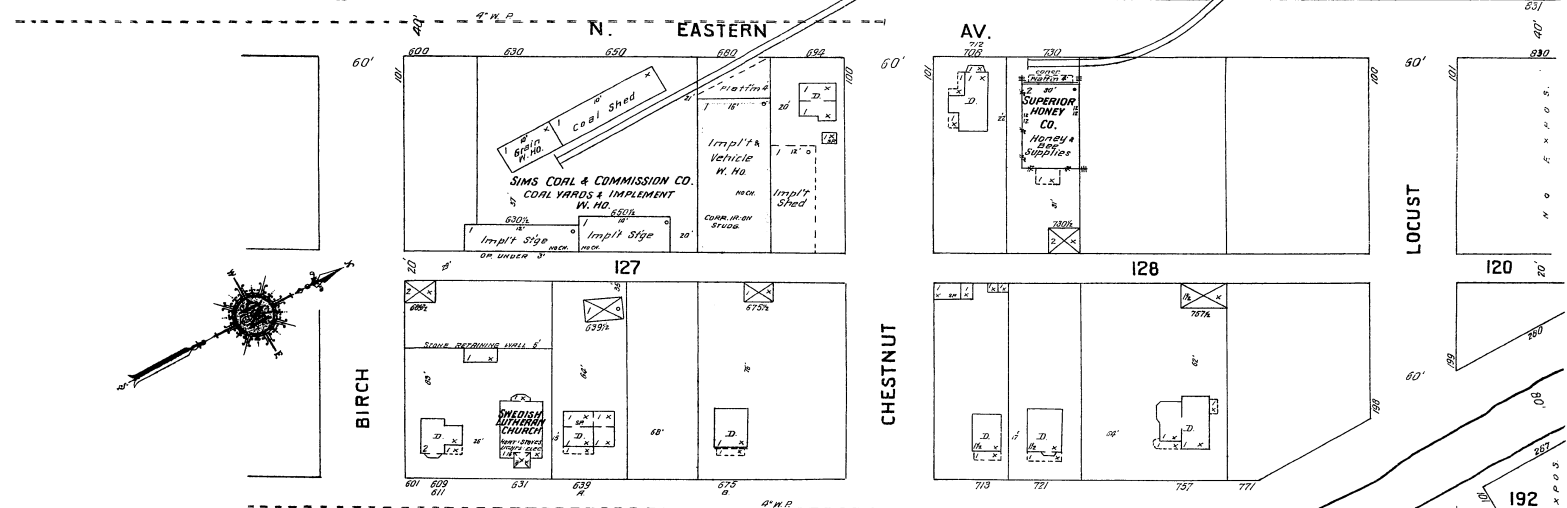
5

4

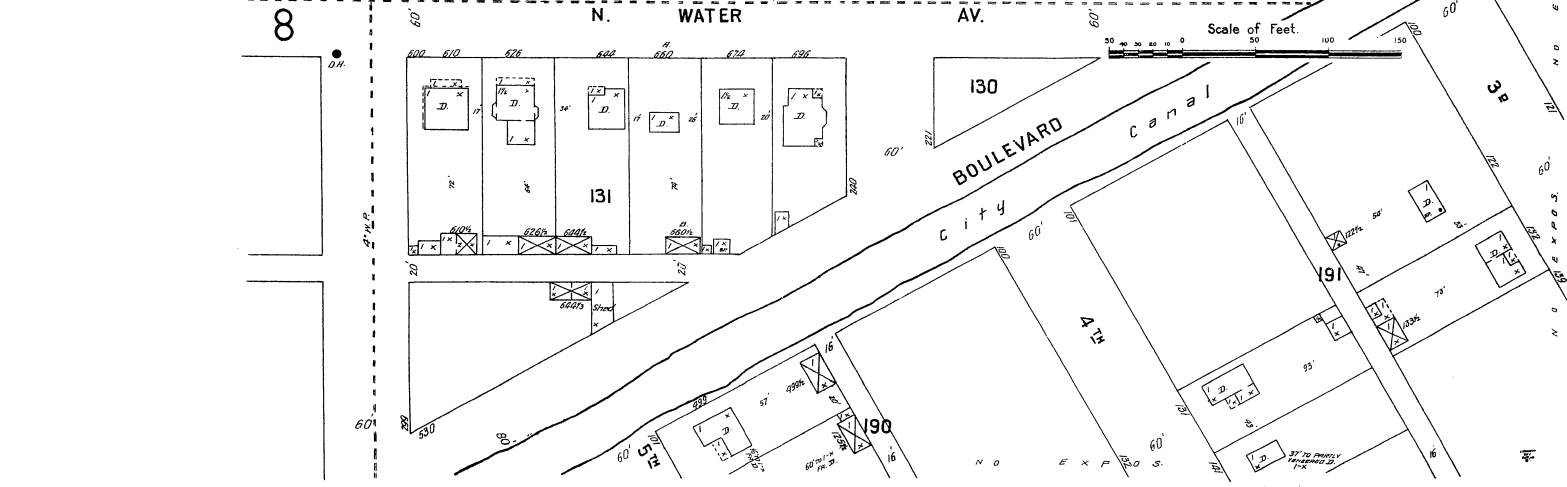
SHOUP AV. 4



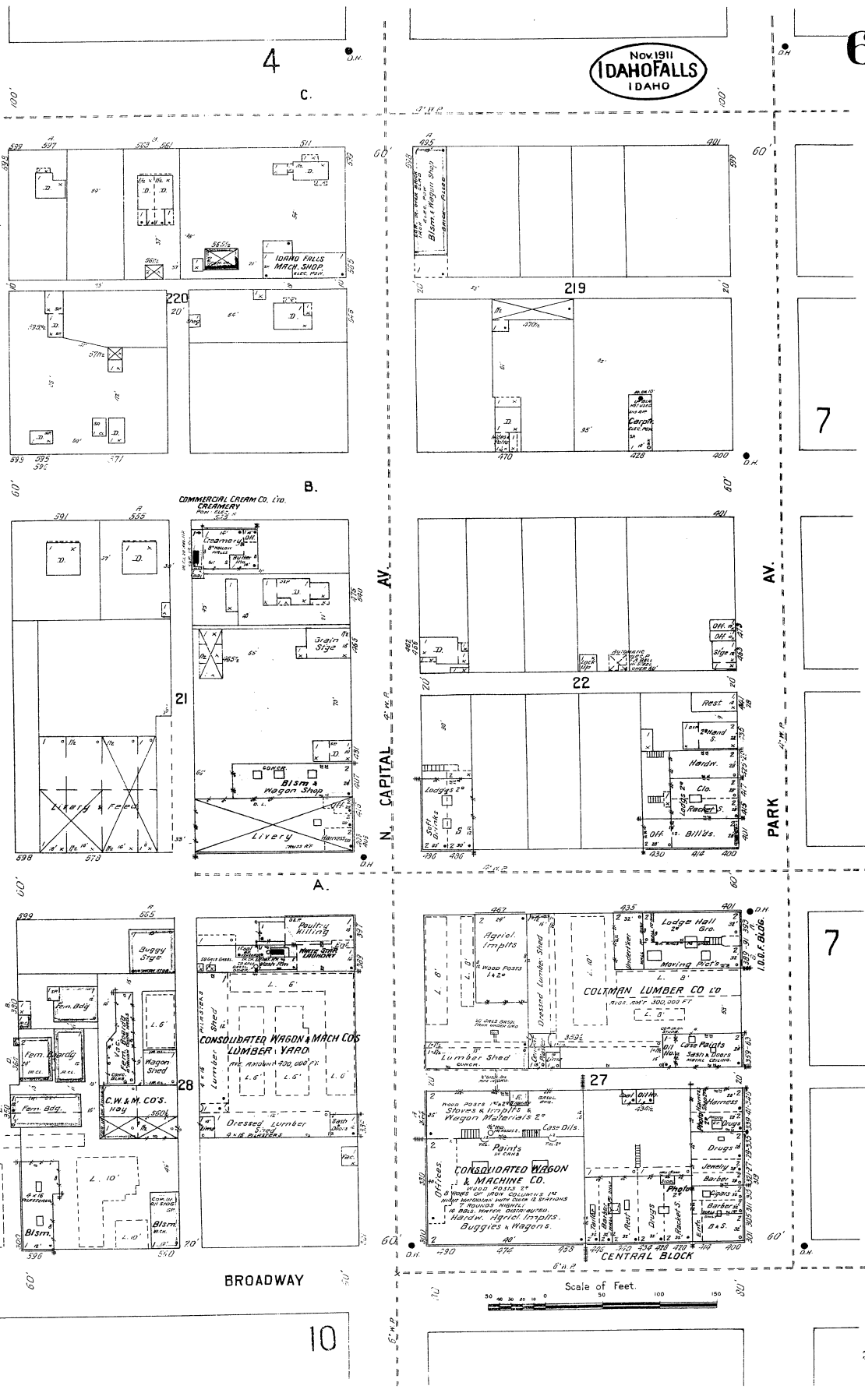
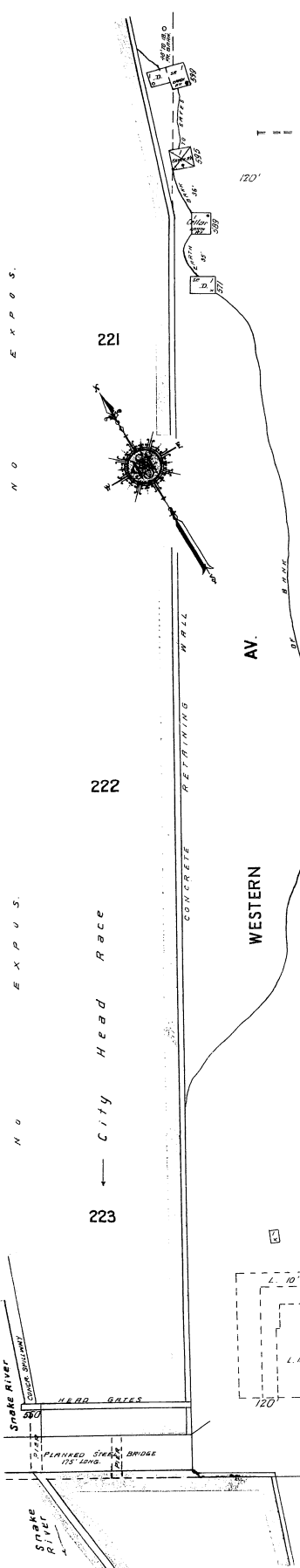
N. EASTERN AV.



N. WATER AV.



Scale of Feet.
0 50 100 150



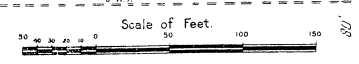
Nov 1911
IDAHOF FALLS
 IDAHO

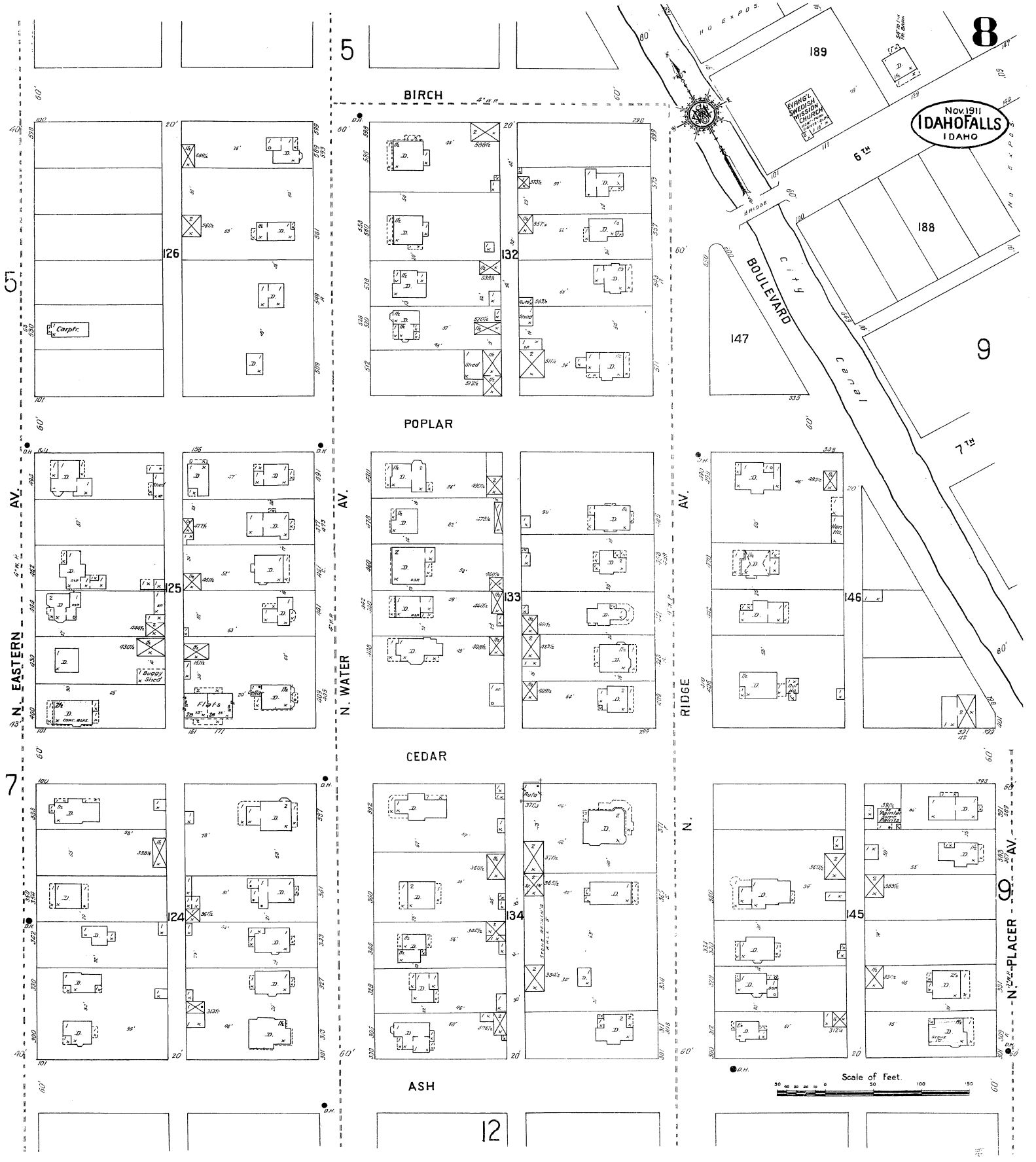
6

7

7

10





NOV. 1911
IDAHO FALLS
IDAHO

Scale of Feet.
0 50 100 150

NO EXPOS.

Odd Fellows Home
(UNOCCUPIED)



297

NO EXPOS.

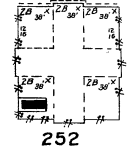
4TH



8

CEDAR ST.

EAST SIDE SCHOOL
HERY-STEIN LYS-ELEC.



252

NO EXPOS.

CANAL

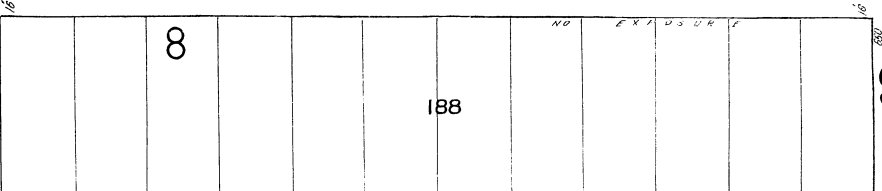
AV.

ASH

BRIDGE

BOULEVARD

W. CORNER AV.

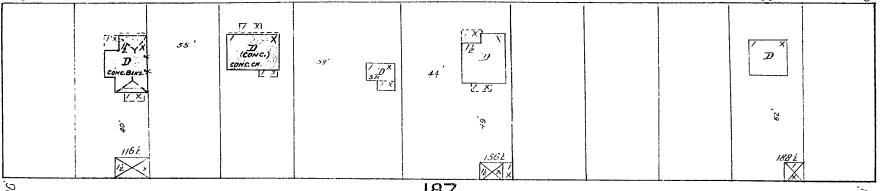


8

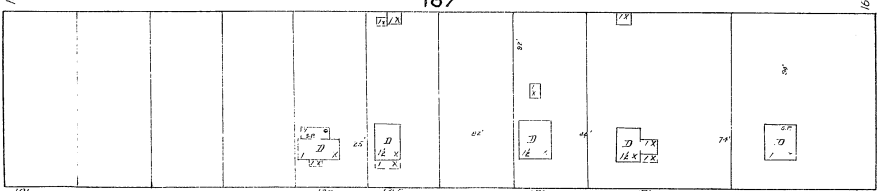
188

7TH

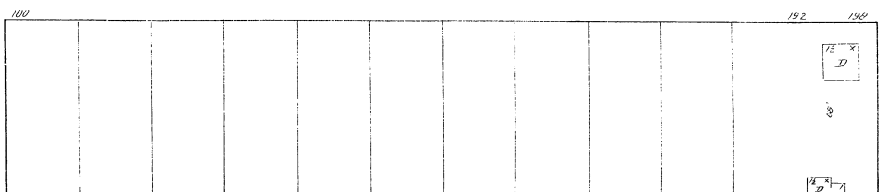
Nov 1911
IDAHO FALLS
IDAHO



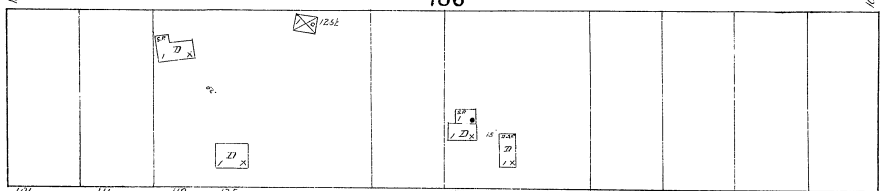
187



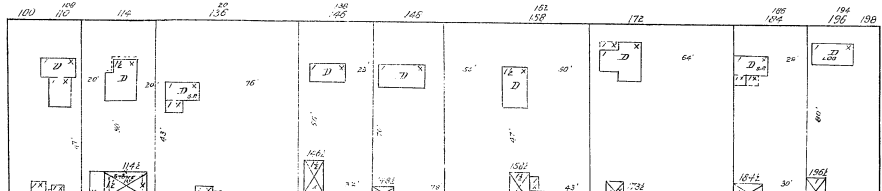
8TH



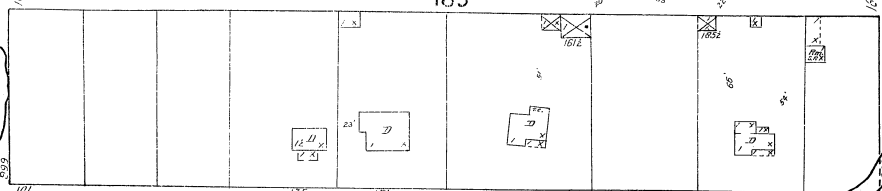
186



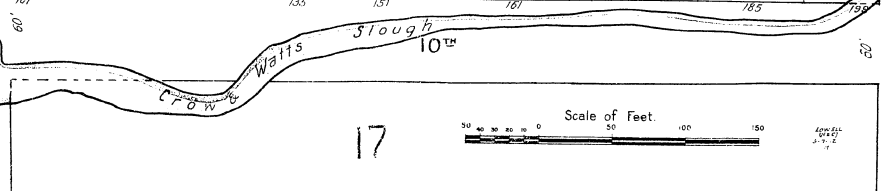
9TH



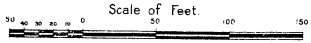
185



10TH



17



Scale of Feet.

9

AV.

LEE

NO EXPOS.

NO EXPOS.

NO EXPOS.

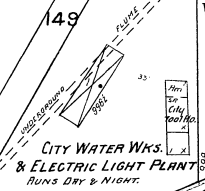
12

N. PLACER

ELM

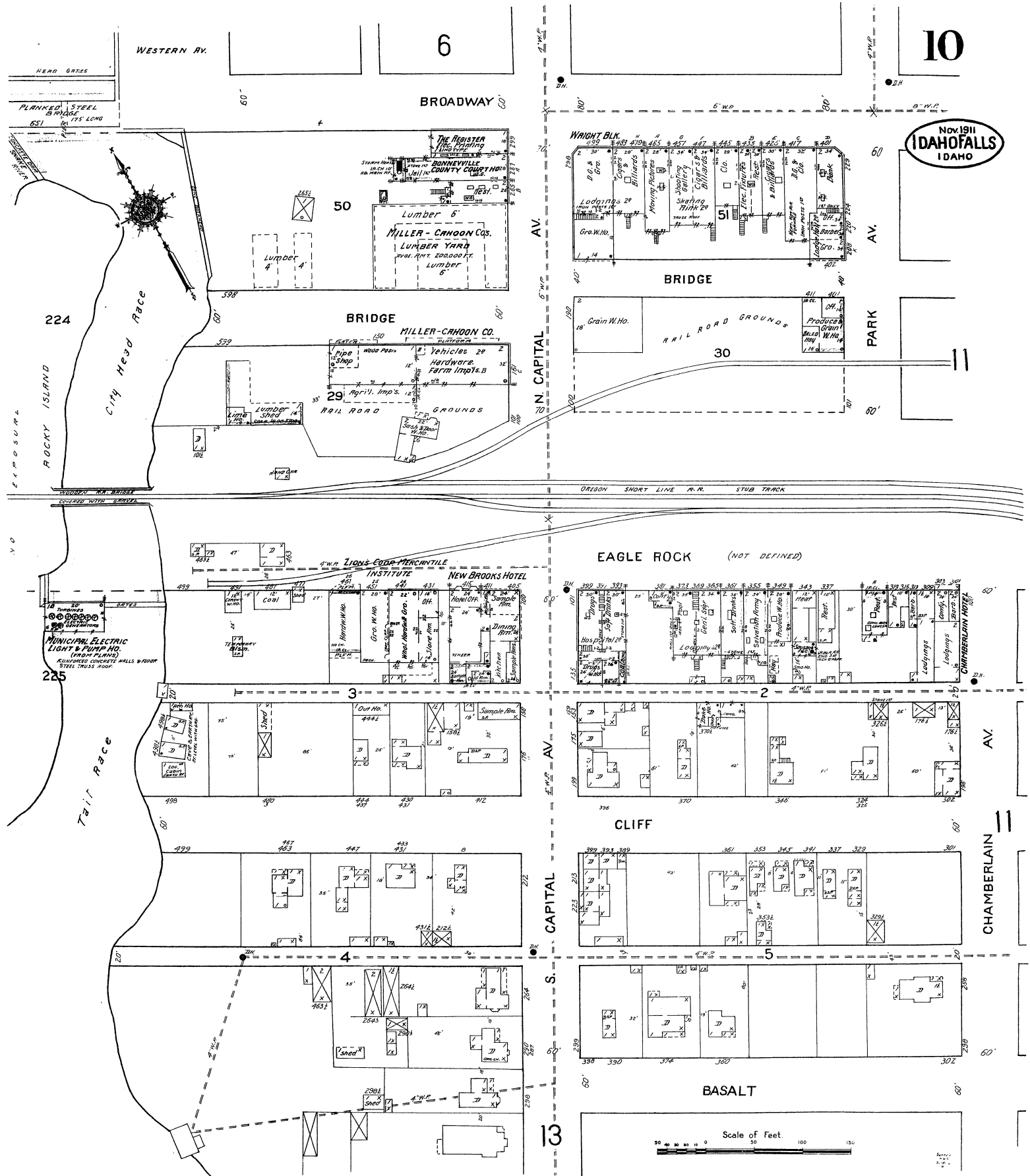
16

CITY WATER WKS.
& ELECTRIC LIGHT PLANT
RUNS DAY & NIGHT

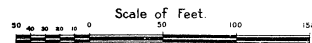


1500 G.P.
CENT PUMP

W. CORNER AV.



Nov 1911
IDAHO FALLS
IDAHO



13

AV.

PARK

AV.

11

CHAMBERLAIN

AV.

N. CAPITAL

AV.

S. CAPITAL

13

6

10

50

224

225

3

4

51

5

30

2

2

2

5

5

21

21

21

21

21

21

21

21

21

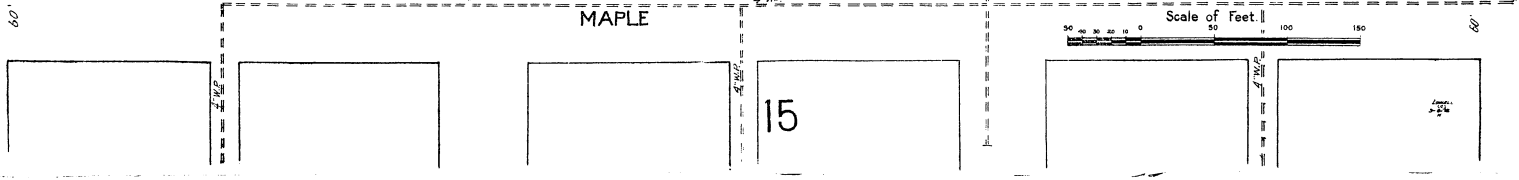
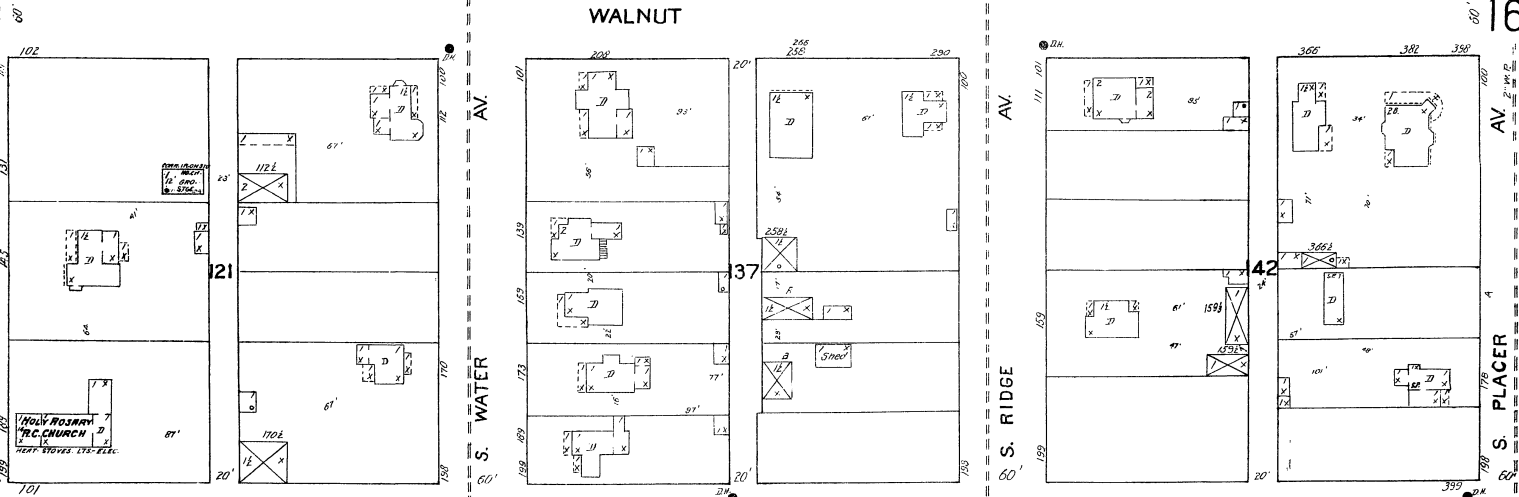
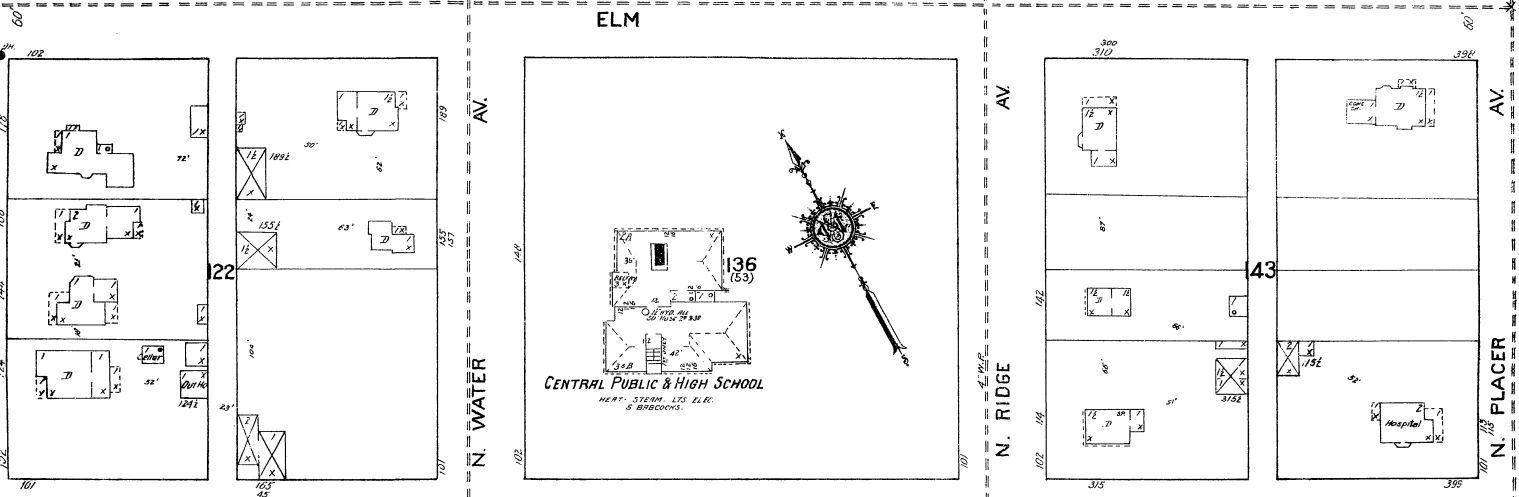
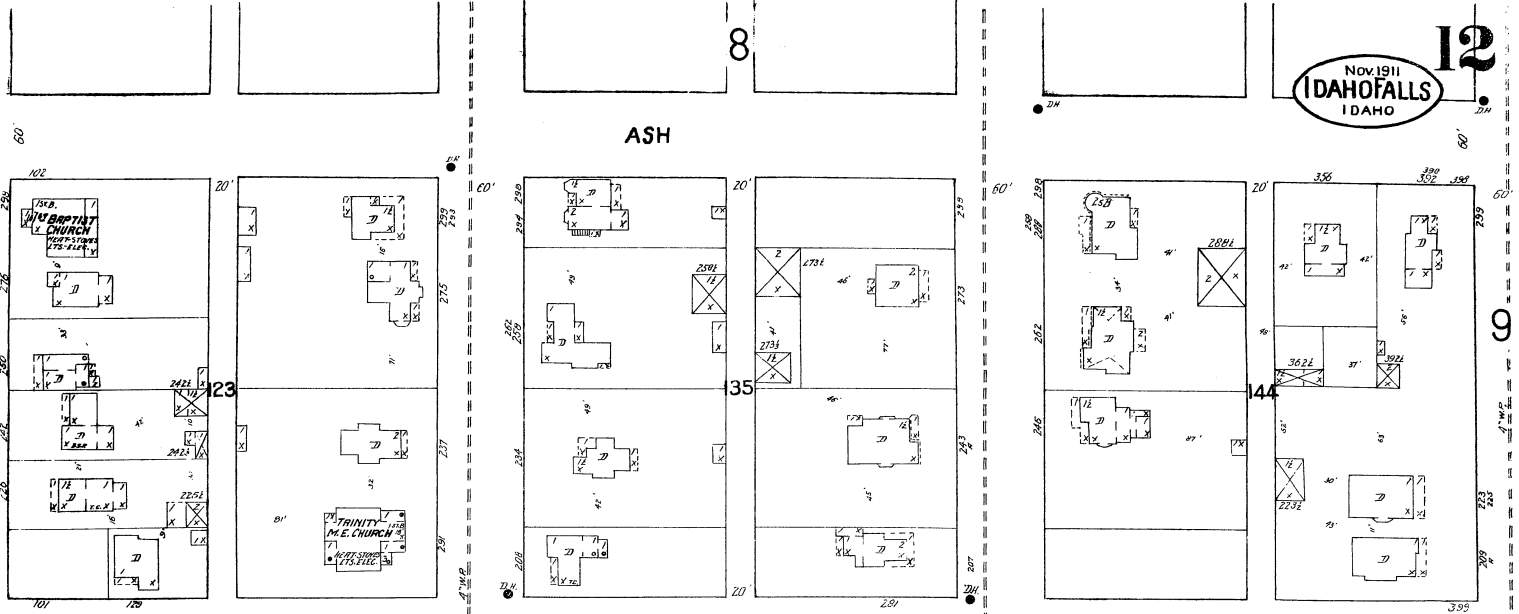
21

21

21

21

21



Scale of Feet
0 50 100 150

13

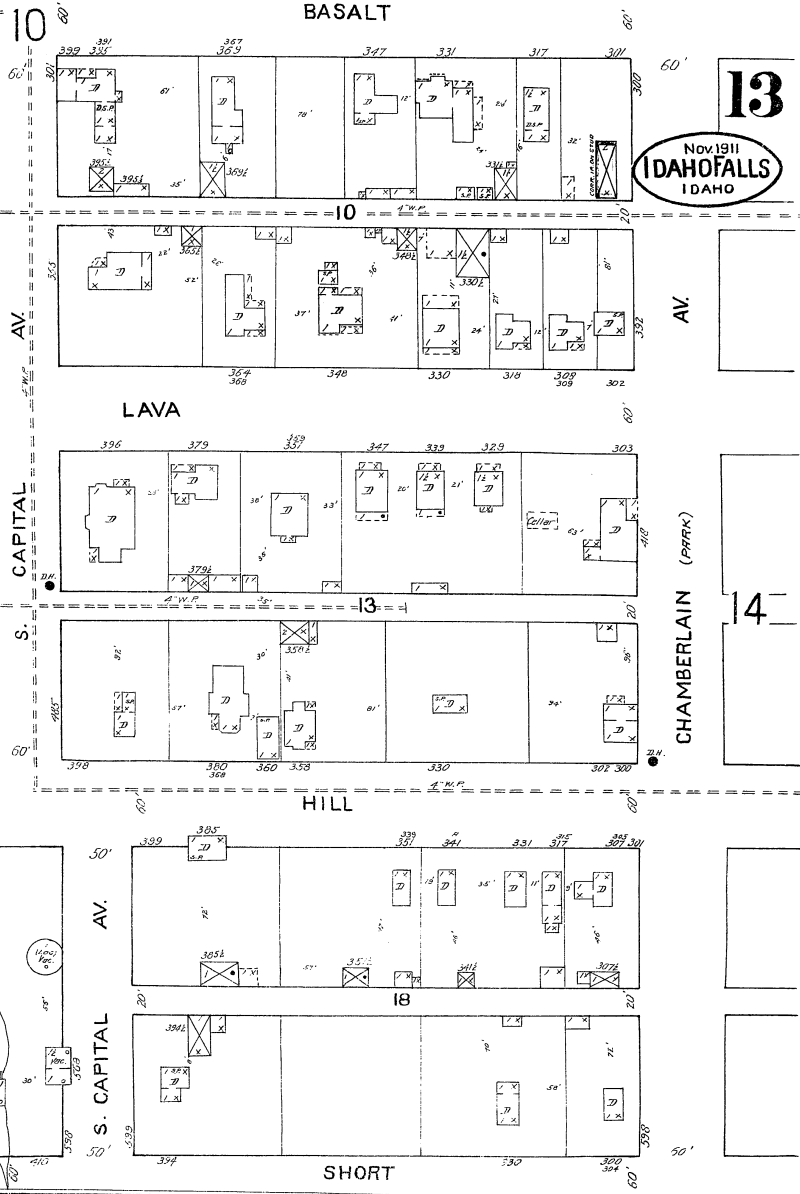
NOV 1911
IDAHO FALLS
IDAHO

BASALT

LAVA

HILL

SHORT



SHUPES RIVER

NO EXPOSURE

226

NO EXPOSURE

NO EXPOSURE

NO EXPOSURE

NO EXPOSURE

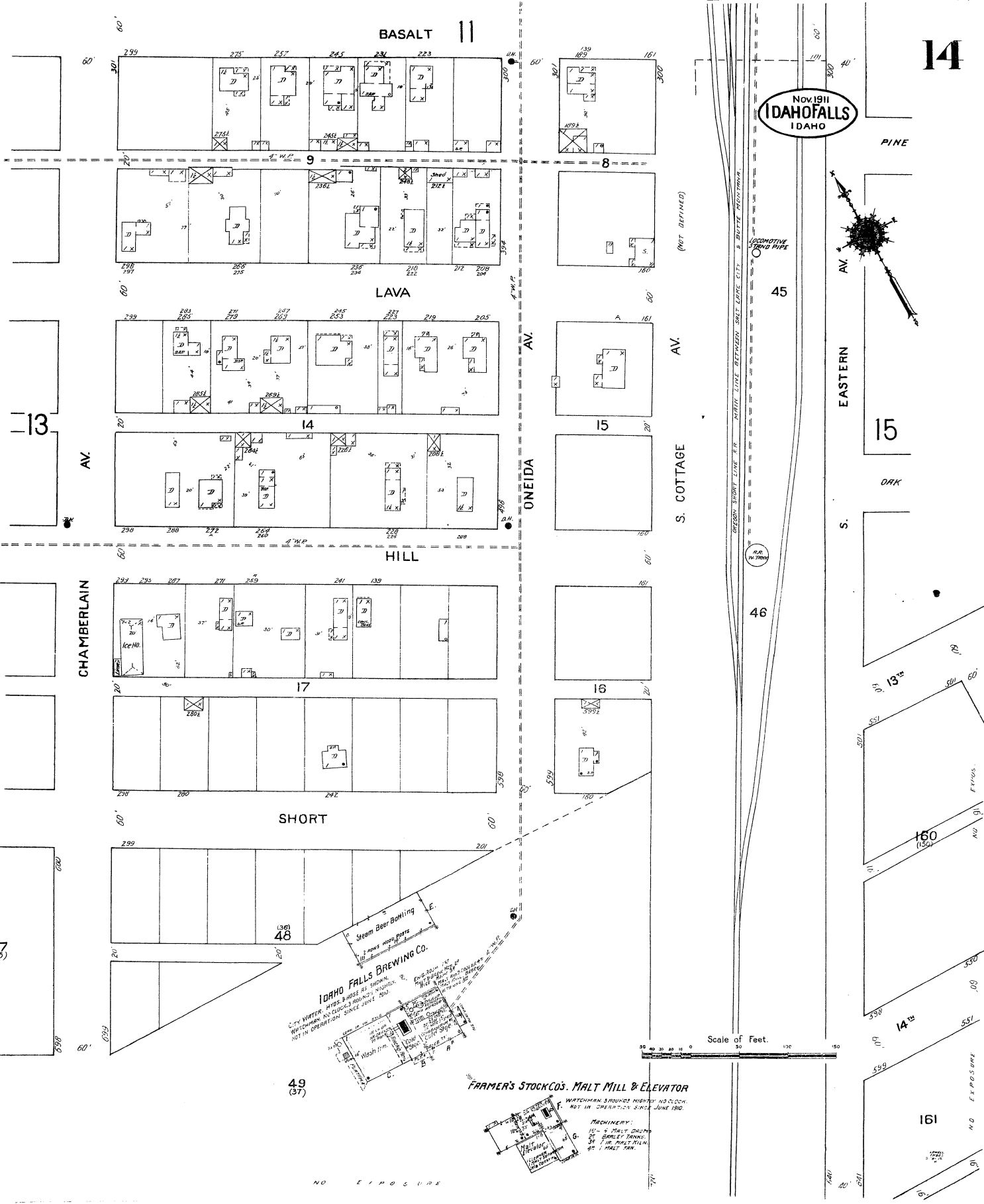
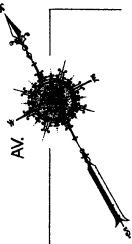
NO EXPOSURE

CONSOLIDATED WATSON & MACHINE CO'S.
 AGRICULTURAL IMPLEMENT
 WAREHOUSE.

WATER TANK, NEWARK CLOCK & STATIONS, 8 ROOMS BETWEEN SHIP & TRAIL,
 10 BOLS. WATER & PAIS. 1 BARBOCK. HERTY-STOCKS. LYS. ELEC.

IDAHO FALLS MILLING & ELEVATOR CO.
 CAPY. 200 BOLS. PER 24 HRS. RUNS DAY & NIGHT
 WITHIN WHEAT (1) 11. (2) 12. (3) 13. (4) 14. (5) 15. (6) 16. (7) 17. (8) 18. (9) 19. (10) 20. (11) 21. (12) 22. (13) 23. (14) 24. (15) 25. (16) 26. (17) 27. (18) 28. (19) 29. (20) 30. (21) 31. (22) 32. (23) 33. (24) 34. (25) 35. (26) 36. (27) 37. (28) 38. (29) 39. (30) 40. (31) 41. (32) 42. (33) 43. (34) 44. (35) 45. (36) 46. (37) 47. (38) 48. (39) 49. (40) 50. (41) 51. (42) 52. (43) 53. (44) 54. (45) 55. (46) 56. (47) 57. (48) 58. (49) 59. (50) 60. (51) 61. (52) 62. (53) 63. (54) 64. (55) 65. (56) 66. (57) 67. (58) 68. (59) 69. (60) 70. (61) 71. (62) 72. (63) 73. (64) 74. (65) 75. (66) 76. (67) 77. (68) 78. (69) 79. (80) 81. (82) 83. (84) 85. (86) 87. (88) 89. (90) 91. (92) 93. (94) 95. (96) 97. (98) 99. (100) 101. (102) 103. (104) 105. (106) 107. (108) 109. (110) 111. (112) 113. (114) 115. (116) 117. (118) 119. (120) 121. (122) 123. (124) 125. (126) 127. (128) 129. (130) 131. (132) 133. (134) 135. (136) 137. (138) 139. (140) 141. (142) 143. (144) 145. (146) 147. (148) 149. (150) 151. (152) 153. (154) 155. (156) 157. (158) 159. (160) 161. (162) 163. (164) 165. (166) 167. (168) 169. (170) 171. (172) 173. (174) 175. (176) 177. (178) 179. (180) 181. (182) 183. (184) 185. (186) 187. (188) 189. (190) 191. (192) 193. (194) 195. (196) 197. (198) 199. (200) 201. (202) 203. (204) 205. (206) 207. (208) 209. (210) 211. (212) 213. (214) 215. (216) 217. (218) 219. (220) 221. (222) 223. (224) 225. (226) 227. (228) 229. (230) 231. (232) 233. (234) 235. (236) 237. (238) 239. (240) 241. (242) 243. (244) 245. (246) 247. (248) 249. (250) 251. (252) 253. (254) 255. (256) 257. (258) 259. (260) 261. (262) 263. (264) 265. (266) 267. (268) 269. (270) 271. (272) 273. (274) 275. (276) 277. (278) 279. (280) 281. (282) 283. (284) 285. (286) 287. (288) 289. (290) 291. (292) 293. (294) 295. (296) 297. (298) 299. (300) 301. (302) 303. (304) 305. (306) 307. (308) 309. (310) 311. (312) 313. (314) 315. (316) 317. (318) 319. (320) 321. (322) 323. (324) 325. (326) 327. (328) 329. (330) 331. (332) 333. (334) 335. (336) 337. (338) 339. (340) 341. (342) 343. (344) 345. (346) 347. (348) 349. (350) 351. (352) 353. (354) 355. (356) 357. (358) 359. (360) 361. (362) 363. (364) 365. (366) 367. (368) 369. (370) 371. (372) 373. (374) 375. (376) 377. (378) 379. (380) 381. (382) 383. (384) 385. (386) 387. (388) 389. (390) 391. (392) 393. (394) 395. (396) 397. (398) 399. (400) 401. (402) 403. (404) 405. (406) 407. (408) 409. (410) 411. (412) 413. (414) 415. (416) 417. (418) 419. (420) 421. (422) 423. (424) 425. (426) 427. (428) 429. (430) 431. (432) 433. (434) 435. (436) 437. (438) 439. (440) 441. (442) 443. (444) 445. (446) 447. (448) 449. (450) 451. (452) 453. (454) 455. (456) 457. (458) 459. (460) 461. (462) 463. (464) 465. (466) 467. (468) 469. (470) 471. (472) 473. (474) 475. (476) 477. (478) 479. (480) 481. (482) 483. (484) 485. (486) 487. (488) 489. (490) 491. (492) 493. (494) 495. (496) 497. (498) 499. (500) 501. (502) 503. (504) 505. (506) 507. (508) 509. (510) 511. (512) 513. (514) 515. (516) 517. (518) 519. (520) 521. (522) 523. (524) 525. (526) 527. (528) 529. (530) 531. (532) 533. (534) 535. (536) 537. (538) 539. (540) 541. (542) 543. (544) 545. (546) 547. (548) 549. (550) 551. (552) 553. (554) 555. (556) 557. (558) 559. (560) 561. (562) 563. (564) 565. (566) 567. (568) 569. (570) 571. (572) 573. (574) 575. (576) 577. (578) 579. (580) 581. (582) 583. (584) 585. (586) 587. (588) 589. (590) 591. (592) 593. (594) 595. (596) 597. (598) 599. (600) 601. (602) 603. (604) 605. (606) 607. (608) 609. (610) 611. (612) 613. (614) 615. (616) 617. (618) 619. (620) 621. (622) 623. (624) 625. (626) 627. (628) 629. (630) 631. (632) 633. (634) 635. (636) 637. (638) 639. (640) 641. (642) 643. (644) 645. (646) 647. (648) 649. (650) 651. (652) 653. (654) 655. (656) 657. (658) 659. (660) 661. (662) 663. (664) 665. (666) 667. (668) 669. (670) 671. (672) 673. (674) 675. (676) 677. (678) 679. (680) 681. (682) 683. (684) 685. (686) 687. (688) 689. (690) 691. (692) 693. (694) 695. (696) 697. (698) 699. (700) 701. (702) 703. (704) 705. (706) 707. (708) 709. (710) 711. (712) 713. (714) 715. (716) 717. (718) 719. (720) 721. (722) 723. (724) 725. (726) 727. (728) 729. (730) 731. (732) 733. (734) 735. (736) 737. (738) 739. (740) 741. (742) 743. (744) 745. (746) 747. (748) 749. (750) 751. (752) 753. (754) 755. (756) 757. (758) 759. (760) 761. (762) 763. (764) 765. (766) 767. (768) 769. (770) 771. (772) 773. (774) 775. (776) 777. (778) 779. (780) 781. (782) 783. (784) 785. (786) 787. (788) 789. (790) 791. (792) 793. (794) 795. (796) 797. (798) 799. (800) 801. (802) 803. (804) 805. (806) 807. (808) 809. (810) 811. (812) 813. (814) 815. (816) 817. (818) 819. (820) 821. (822) 823. (824) 825. (826) 827. (828) 829. (830) 831. (832) 833. (834) 835. (836) 837. (838) 839. (840) 841. (842) 843. (844) 845. (846) 847. (848) 849. (850) 851. (852) 853. (854) 855. (856) 857. (858) 859. (860) 861. (862) 863. (864) 865. (866) 867. (868) 869. (870) 871. (872) 873. (874) 875. (876) 877. (878) 879. (880) 881. (882) 883. (884) 885. (886) 887. (888) 889. (890) 891. (892) 893. (894) 895. (896) 897. (898) 899. (900) 901. (902) 903. (904) 905. (906) 907. (908) 909. (910) 911. (912) 913. (914) 915. (916) 917. (918) 919. (920) 921. (922) 923. (924) 925. (926) 927. (928) 929. (930) 931. (932) 933. (934) 935. (936) 937. (938) 939. (940) 941. (942) 943. (944) 945. (946) 947. (948) 949. (950) 951. (952) 953. (954) 955. (956) 957. (958) 959. (960) 961. (962) 963. (964) 965. (966) 967. (968) 969. (970) 971. (972) 973. (974) 975. (976) 977. (978) 979. (980) 981. (982) 983. (984) 985. (986) 987. (988) 989. (990) 991. (992) 993. (994) 995. (996) 997. (998) 999. (1000) 1001. (1002) 1003. (1004) 1005. (1006) 1007. (1008) 1009. (1010) 1011. (1012) 1013. (1014) 1015. (1016) 1017. (1018) 1019. (1020) 1021. (1022) 1023. (1024) 1025. (1026) 1027. (1028) 1029. (1030) 1031. (1032) 1033. (1034) 1035. (1036) 1037. (1038) 1039. (1040) 1041. (1042) 1043. (1044) 1045. (1046) 1047. (1048) 1049. (1050) 1051. (1052) 1053. (1054) 1055. (1056) 1057. (1058) 1059. (1060) 1061. (1062) 1063. (1064) 1065. (1066) 1067. (1068) 1069. (1070) 1071. (1072) 1073. (1074) 1075. (1076) 1077. (1078) 1079. (1080) 1081. (1082) 1083. (1084) 1085. (1086) 1087. (1088) 1089. (1090) 1091. (1092) 1093. (1094) 1095. (1096) 1097. (1098) 1099. (1100) 1101. (1102) 1103. (1104) 1105. (1106) 1107. (1108) 1109. (1110) 1111. (1112) 1113. (1114) 1115. (1116) 1117. (1118) 1119. (1120) 1121. (1122) 1123. (1124) 1125. (1126) 1127. (1128) 1129. (1130) 1131. (1132) 1133. (1134) 1135. (1136) 1137. (1138) 1139. (1140) 1141. (1142) 1143. (1144) 1145. (1146) 1147. (1148) 1149. (1150) 1151. (1152) 1153. (1154) 1155. (1156) 1157. (1158) 1159. (1160) 1161. (1162) 1163. (1164) 1165. (1166) 1167. (1168) 1169. (1170) 1171. (1172) 1173. (1174) 1175. (1176) 1177. (1178) 1179. (1180) 1181. (1182) 1183. (1184) 1185. (1186) 1187. (1188) 1189. (1190) 1191. (1192) 1193. (1194) 1195. (1196) 1197. (1198) 1199. (1200) 1201. (1202) 1203. (1204) 1205. (1206) 1207. (1208) 1209. (1210) 1211. (1212) 1213. (1214) 1215. (1216) 1217. (1218) 1219. (1220) 1221. (1222) 1223. (1224) 1225. (1226) 1227. (1228) 1229. (1230) 1231. (1232) 1233. (1234) 1235. (1236) 1237. (1238) 1239. (1240) 1241. (1242) 1243. (1244) 1245. (1246) 1247. (1248) 1249. (1250) 1251. (1252) 1253. (1254) 1255. (1256) 1257. (1258) 1259. (1260) 1261. (1262) 1263. (1264) 1265. (1266) 1267. (1268) 1269. (1270) 1271. (1272) 1273. (1274) 1275. (1276) 1277. (1278) 1279. (1280) 1281. (1282) 1283. (1284) 1285. (1286) 1287. (1288) 1289. (1290) 1291. (1292) 1293. (1294) 1295. (1296) 1297. (1298) 1299. (1300) 1301. (1302) 1303. (1304) 1305. (1306) 1307. (1308) 1309. (1310) 1311. (1312) 1313. (1314) 1315. (1316) 1317. (1318) 1319. (1320) 1321. (1322) 1323. (1324) 1325. (1326) 1327. (1328) 1329. (1330) 1331. (1332) 1333. (1334) 1335. (1336) 1337. (1338) 1339. (1340) 1341. (1342) 1343. (1344) 1345. (1346) 1347. (1348) 1349. (1350) 1351. (1352) 1353. (1354) 1355. (1356) 1357. (1358) 1359. (1360) 1361. (1362) 1363. (1364) 1365. (1366) 1367. (1368) 1369. (1370) 1371. (1372) 1373. (1374) 1375. (1376) 1377. (1378) 1379. (1380) 1381. (1382) 1383. (1384) 1385. (1386) 1387. (1388) 1389. (1390) 1391. (1392) 1393. (1394) 1395. (1396) 1397. (1398) 1399. (1400) 1401. (1402) 1403. (1404) 1405. (1406) 1407. (1408) 1409. (1410) 1411. (1412) 1413. (1414) 1415. (1416) 1417. (1418) 1419. (1420) 1421. (1422) 1423. (1424) 1425. (1426) 1427. (1428) 1429. (1430) 1431. (1432) 1433. (1434) 1435. (1436) 1437. (1438) 1439. (1440) 1441. (1442) 1443. (1444) 1445. (1446) 1447. (1448) 1449. (1450) 1451. (1452) 1453. (1454) 1455. (1456) 1457. (1458) 1459. (1460) 1461. (1462) 1463. (1464) 1465. (1466) 1467. (1468) 1469. (1470) 1471. (1472) 1473. (1474) 1475. (1476) 1477. (1478) 1479. (1480) 1481. (1482) 1483. (1484) 1485. (1486) 1487. (1488) 1489. (1490) 1491. (1492) 1493. (1494) 1495. (1496) 1497. (1498) 1499. (1500) 1501. (1502) 1503. (1504) 1505. (1506) 1507. (1508) 1509. (1510) 1511. (1512) 1513. (1514) 1515. (1516) 1517. (1518) 1519. (1520) 1521. (1522) 1523. (1524) 1525. (1526) 1527. (1528) 1529. (1530) 1531. (1532) 1533. (1534) 1535. (1536) 1537. (1538) 1539. (1540) 1541. (1542) 1543. (1544) 1545. (1546) 1547. (1548) 1549. (1550) 1551. (1552) 1553. (1554) 1555. (1556) 1557. (1558) 1559. (1560) 1561. (1562) 1563. (1564) 1565. (1566) 1567. (1568) 1569. (1570) 1571. (1572) 1573. (1574) 1575. (1576) 1577. (1578) 1579. (1580) 1581. (1582) 1583. (1584) 1585. (1586) 1587. (1588) 1589. (1590) 1591. (1592) 1593. (1594) 1595. (1596) 1597. (1598) 1599. (1600) 1601. (1602) 1603. (1604) 1605. (1606) 1607. (1608) 1609. (1610) 1611. (1612) 1613. (1614) 1615. (1616) 1617. (1618) 1619. (1620) 1621. (1622) 1623. (1624) 1625. (1626) 1627. (1628) 1629. (1630) 1631. (1632) 1633. (1634) 1635. (1636) 1637. (1638) 1639. (1640) 1641. (1642) 1643. (1644) 1645. (1646) 1647. (1648) 1649. (1650) 1651. (1652) 1653. (1654) 1655. (1656) 1657. (1658) 1659. (1660) 1661. (1662) 1663. (1664) 1665. (1666) 1667. (1668) 1669. (1670) 1671. (1672) 1673. (1674) 1675. (1676) 1677. (1678) 1679. (1680) 1681. (1682) 1683. (1684) 1685. (1686) 1687. (1688) 1689. (1690) 1691. (1692) 1693. (1694) 1695. (1696) 1697. (1698) 1699. (1700) 1701. (1702) 1703. (1704) 1705. (1706) 1707. (1708) 1709. (1710) 1711. (1712) 1713. (1714) 1715. (1716) 1717. (1718) 1719. (1720) 1721. (1722) 1723. (1724) 1725. (1726) 1727. (1728) 1729. (1730) 1731. (1732) 1733. (1734) 1735. (1736) 1737. (1738) 1739. (1740) 1741. (1742) 1743. (1744) 1745. (1746) 1747. (1748) 1749. (1750) 1751. (1752) 1753. (1754) 1755. (1756) 1757. (1758) 1759. (1760) 1761. (1762) 1763. (1764) 1765. (1766) 1767. (1768) 1769. (1770) 1771. (1772) 1773. (1774) 1775. (1776) 1777. (1778) 1779. (1780) 1781. (1782) 1783. (1784) 1785. (1786) 1787. (1788) 1789. (1790) 1791. (1792) 1793. (1794) 1795. (1796) 1797. (1798) 1799. (1800) 1801. (1802) 1803. (1804) 1805. (1806) 1807. (1808) 1809. (1810) 1811. (1812) 1813. (1814) 1815. (1816) 1817. (1818) 1819. (1820) 1821. (1822) 1823. (1824) 1825. (1826) 1827. (1828) 1829. (1830) 1831. (1832) 1833. (1834) 1835. (1836) 1837. (1838) 1839. (1840) 1841. (1842) 1843. (1844) 1845. (1846) 1847. (1848) 1849. (1850) 1851. (1852) 1853. (1854) 1855. (1856) 1857. (1858) 1859. (1860) 1861. (1862) 1863. (1864) 1865. (1866) 1867. (1868) 1869. (1870) 1871. (1872) 1873. (1874) 1875. (1876) 1877. (1878) 1879. (1880) 1881. (1882) 1883. (1884) 1885. (1886) 1887. (1888) 1889. (1890) 1891. (1892) 1893. (1894) 1895. (1896) 1897. (1898) 1899. (1900) 1901. (1902) 1903. (1904) 1905. (1906) 1907. (1908) 1909. (1910) 1911. (1912) 1913. (1914) 1915. (1916) 1917. (1918) 1919. (1920) 1921. (1922) 1923. (1924) 1925. (1926) 1927. (1928) 1929. (1930) 1931. (1932) 1933. (1934) 1935. (1936) 1937. (1938) 1939. (1940) 1941. (1942) 1943. (1944) 1945. (1946) 1947. (1948) 1949. (1950) 1951. (1952) 1953. (1954) 1955. (1956) 1957. (1958) 1959. (1960) 1961. (1962) 1963. (1964) 1965. (1966) 1967. (1968) 1969. (1970) 1971. (1972) 1973. (1974) 1975. (1976) 1977. (1978) 1979. (1980) 1981. (1982) 1983. (1984) 1985. (1986) 1987. (1988) 1989. (1990) 1991. (1992) 1993. (1994) 1995. (1996) 1997. (1998) 1999. (2000) 2001. (2002) 2003. (2004) 2005. (2006) 2007. (2008) 2009. (2010) 2011. (2012) 2013. (2014) 2015. (2016) 2017. (2018) 2019. (2020) 2021. (2022) 2023. (2024) 2025. (2026) 2027. (2028) 2029. (2030) 2031. (2032) 2033. (2034) 2035. (2036) 2037. (2038) 2039. (2040) 2041. (2042) 2043. (2044) 2045. (2046) 2047. (2048) 2049. (2050) 2051. (2052) 2053. (2054) 2055. (2056) 2057. (2058)

NOV 1911
IDAHO FALLS
IDAHO



BASALT 11

LAVA

HILL

SHORT

CHAMBERLAIN

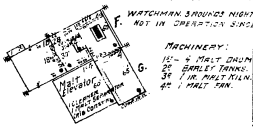
ONEIDA AV.

S. COTTAGE AV.

EASTERN AV.

IDAHO FALLS BREWING CO.
CITY WATER 4000S. WOODS RD. SHOWING
WATCHMAN AND ENGINE ROOMS. NOT IN
OPERATION SINCE JUNE 1910.

FRAMERS STOCK CO'S. MALT MILL & ELEVATOR
WATCHMAN BOUNDS NIGHTLY 10 O'CLOCK.
NOT IN OPERATION SINCE JUNE 1910.



Scale of Feet. 0 50 100 150

E. X. POSITIVE

E. X. POSITIVE

NO EXPOSURE

14

11

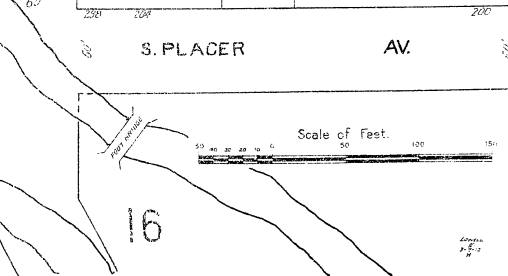
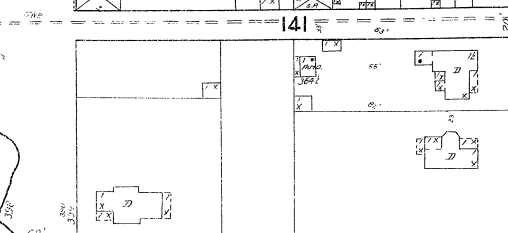
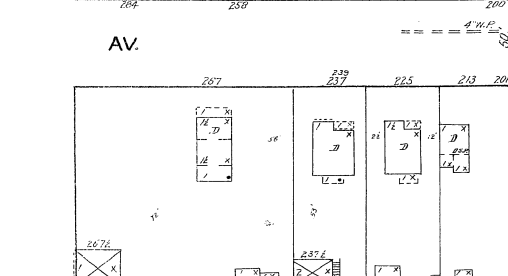
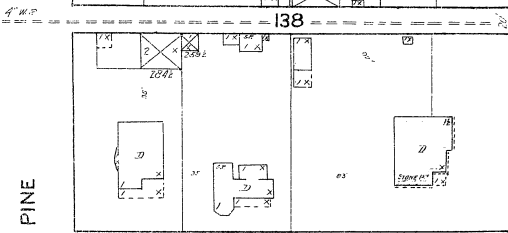
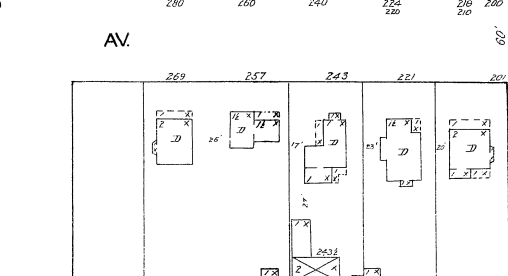
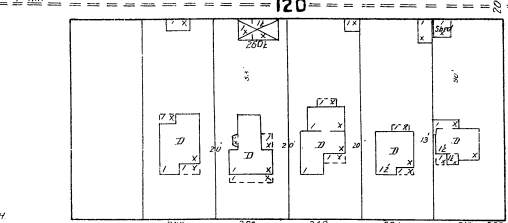
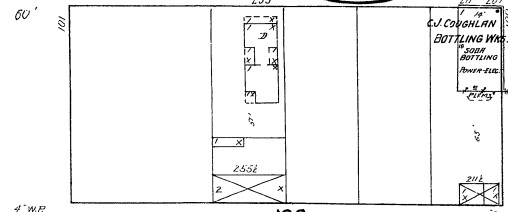
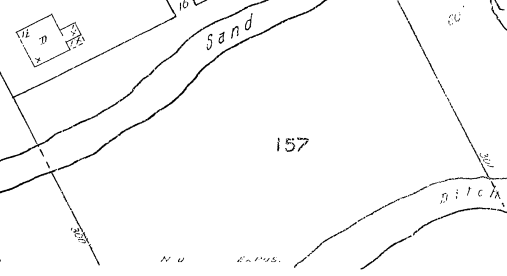
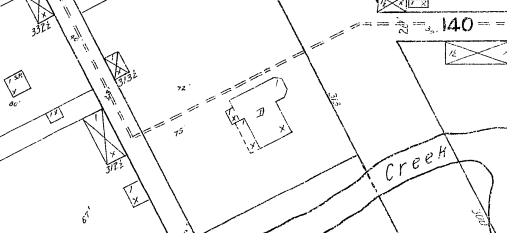
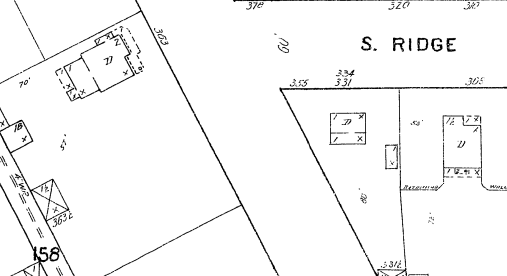
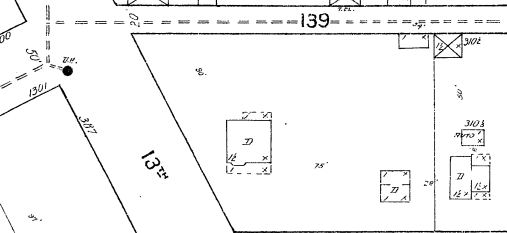
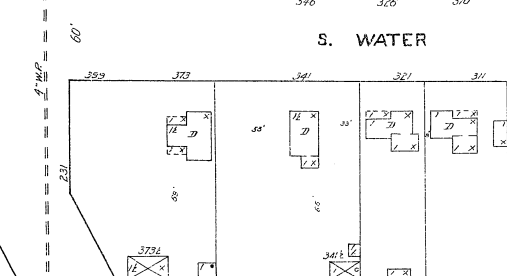
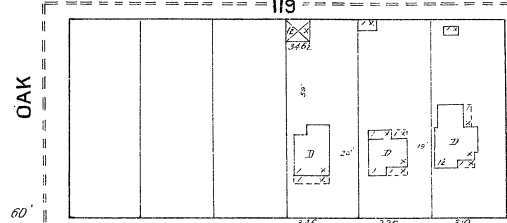
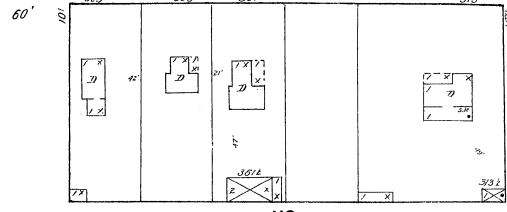
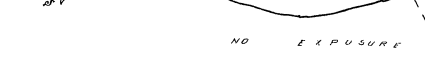
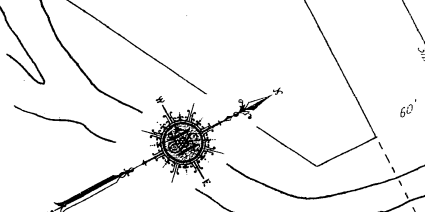
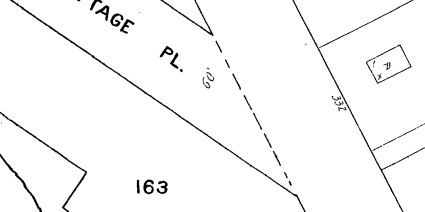
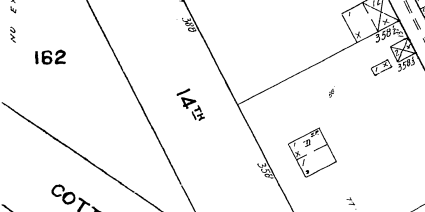
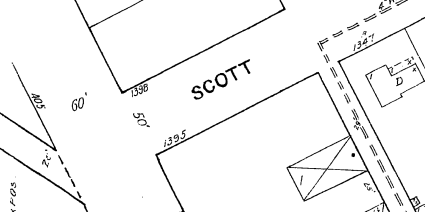
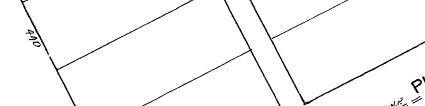
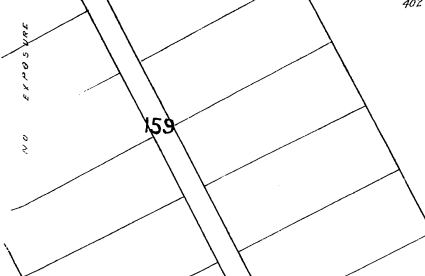
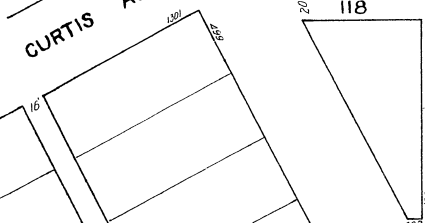
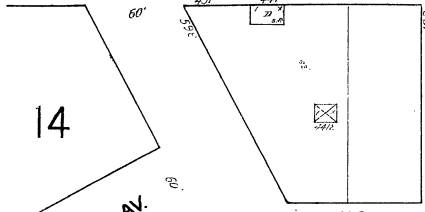
BASALT ST.

NOV 1911
IDAHO FALLS
IDAHO

S. EASTERN

AV.

15



12

12

OAK

S. WATER

AV.

PINE

MAPLE

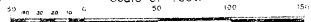
S. RIDGE

AV.

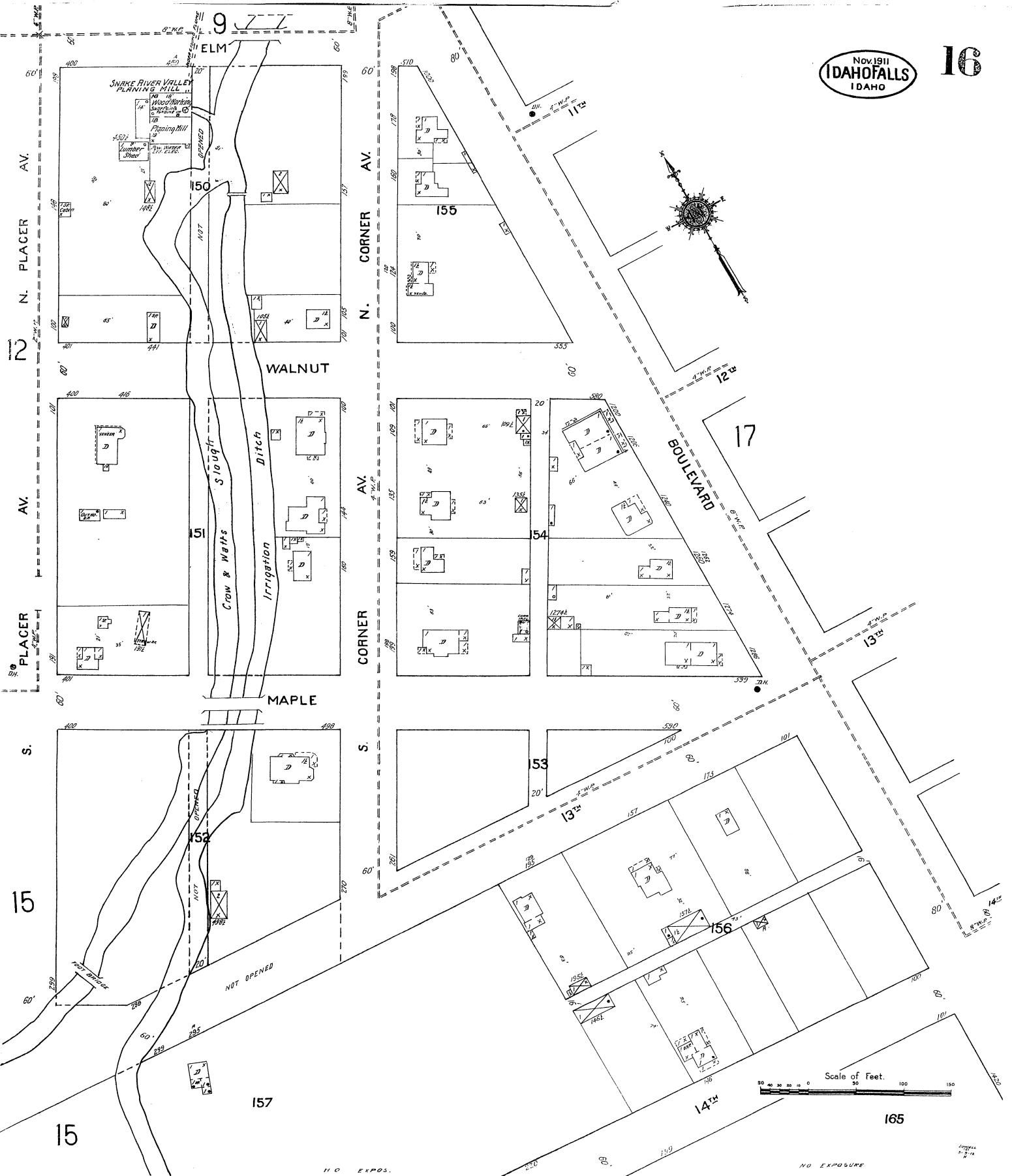
S. PLACER

AV.

Scale of Feet.



NO EXPOSURE



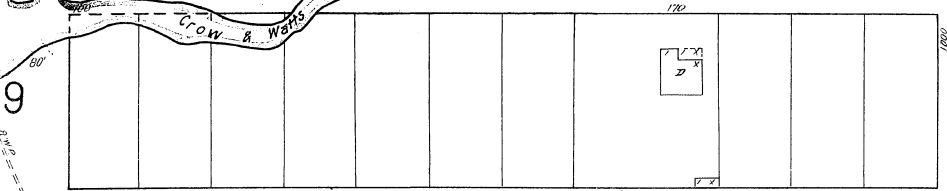
NO EXPOS.

NO EXPOSURE

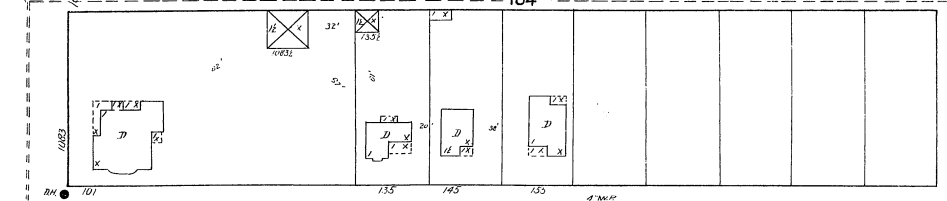


9

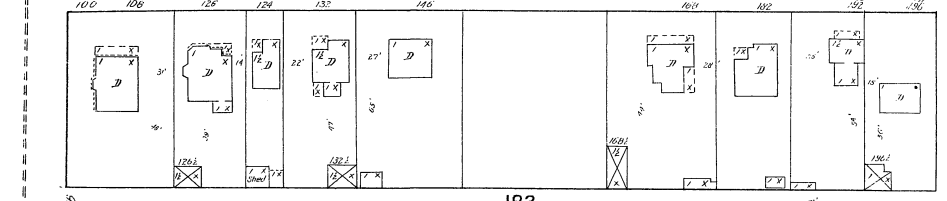
10TH



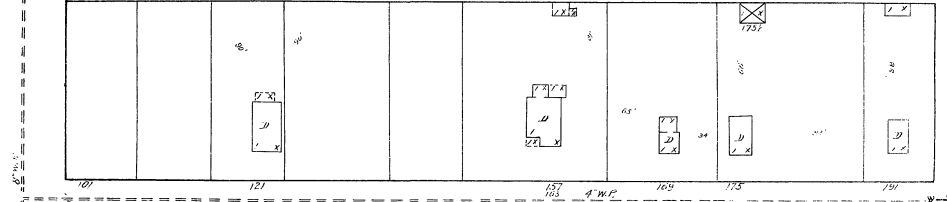
184



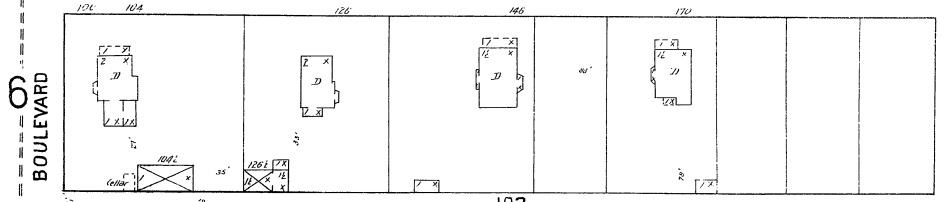
11TH (50 ft. wide)



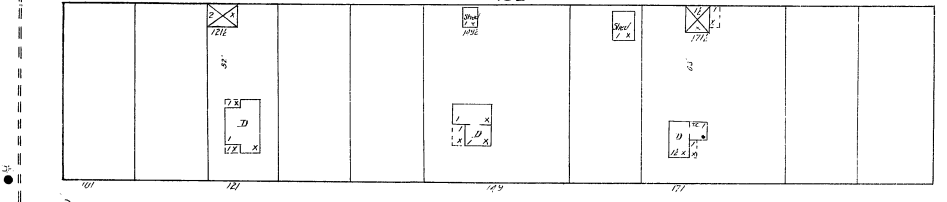
183



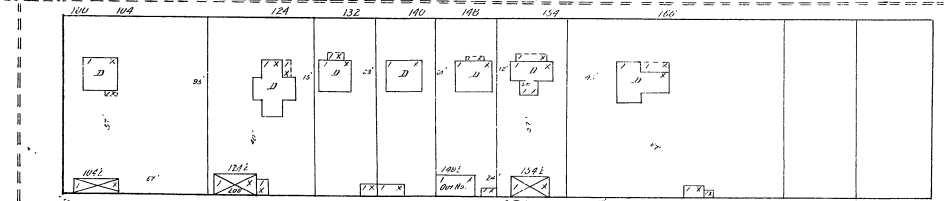
12TH (60 ft. wide)



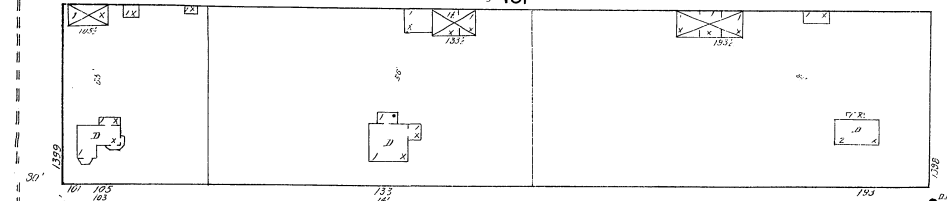
182



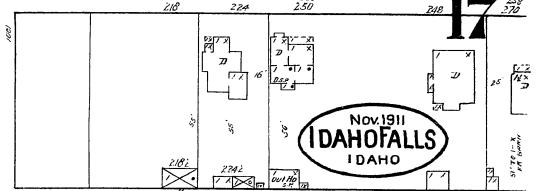
13TH (60 ft. wide)



181

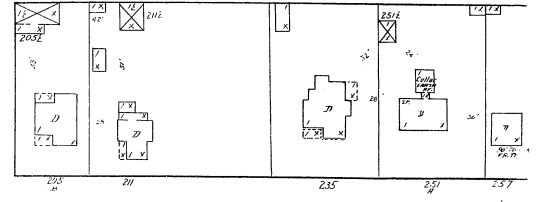


14TH

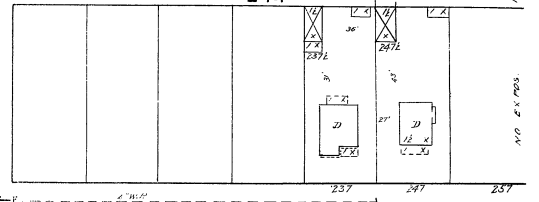


Nov. 1911
IDAHO FALLS
IDAHO

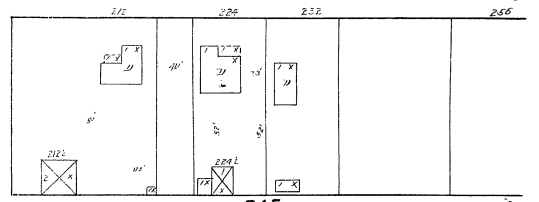
243



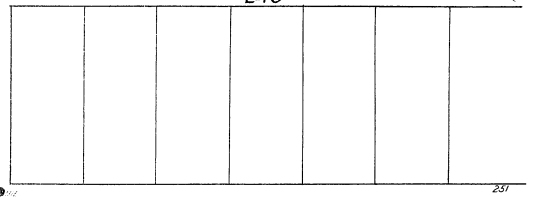
244



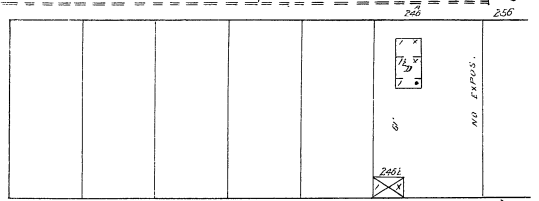
245



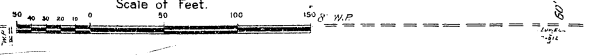
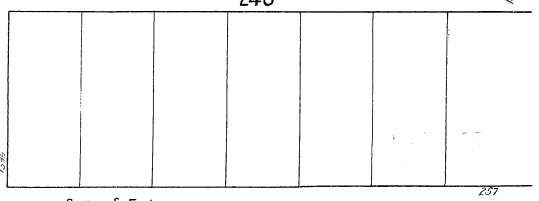
246



246

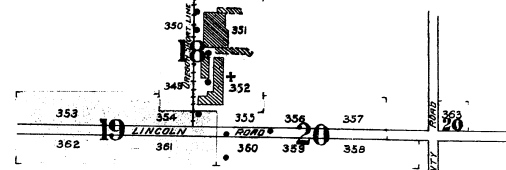


246



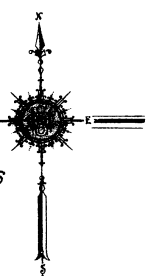
16 BOULEVARD

AV. LEE



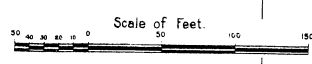
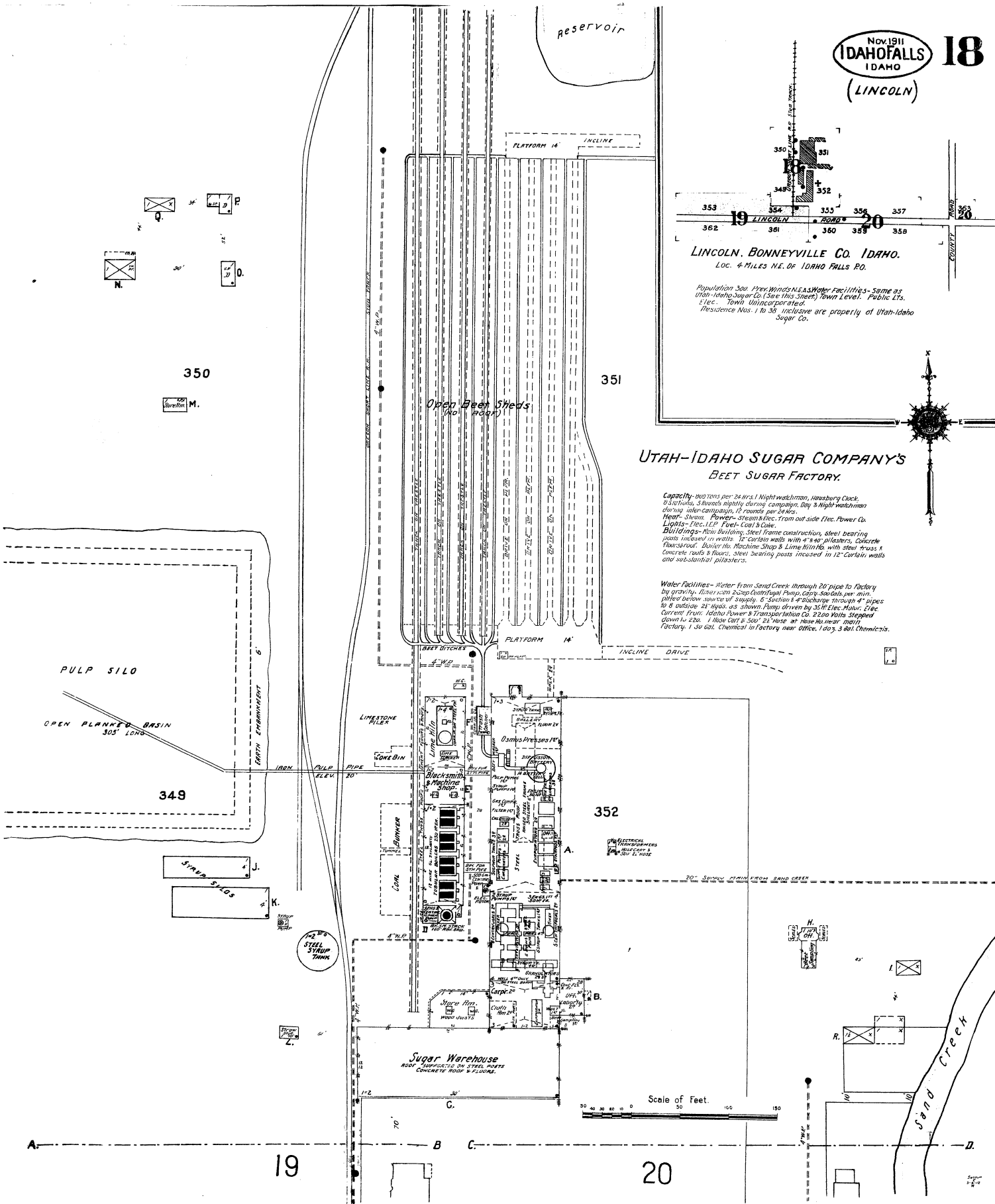
LINCOLN, BONNEVILLE CO. IDAHO.
 LOC. 4 MILES N.E. OF IDAHO FALLS P.O.

Population 500. Prev. Winds N.E. Sugar Facilities - Same as Utah-Idaho Sugar Co. (See This Sheet) Town Level. Public Lts. E. Lec. Town Utilities Corporation.
 Residence Nos. 1 to 35 inclusive are property of Utah-Idaho Sugar Co.



**UTAH-IDAHO SUGAR COMPANY'S
 BEET SUGAR FACTORY.**

Capacity - 300 tons per 24 hrs. 1 Night watchman, Heusberg Clock, 9 Shifts, 3 Roads nightly during campaign, Day & Night watchman during winter campaign, 15 rounds per 24 hrs.
Heat - Steam. Power - Steam & Elec. from outside Elec. Power Co.
Lights - Elec. 110 V. Fuel - Coal & Oil.
Buildings - Main Building, Steel frame construction, steel bearing posts included in walls. 12' curtain walls with 4" top pilasters, concrete floors/roof. Boiler Ho. Machine Shop & Lime Kilns with steel truss & concrete roofs & floors, steel bearing posts included in 12' curtain walls and substantial pilasters.
Water Facilities - Water from Sand Creek through 20" pipe to Factory by gravity. Water can 2000 Gallon Pump, 600 Gals. per min. lifted below water level 20 ft. 6" section of discharge through 4" pipes to 8' outside 21' high, as shown Pump driven by 30 HP Elec. Motor. Elec. Current from Idaho Power & Transportation Co. 2200 Volts Stepped down to 220. 1 Horse Cart & 500' 2 1/2" hose at main ho. near main Factory. 1 30 gal. Chemical in Factory near Office, 1 doz. 3 gal. Chemicals.

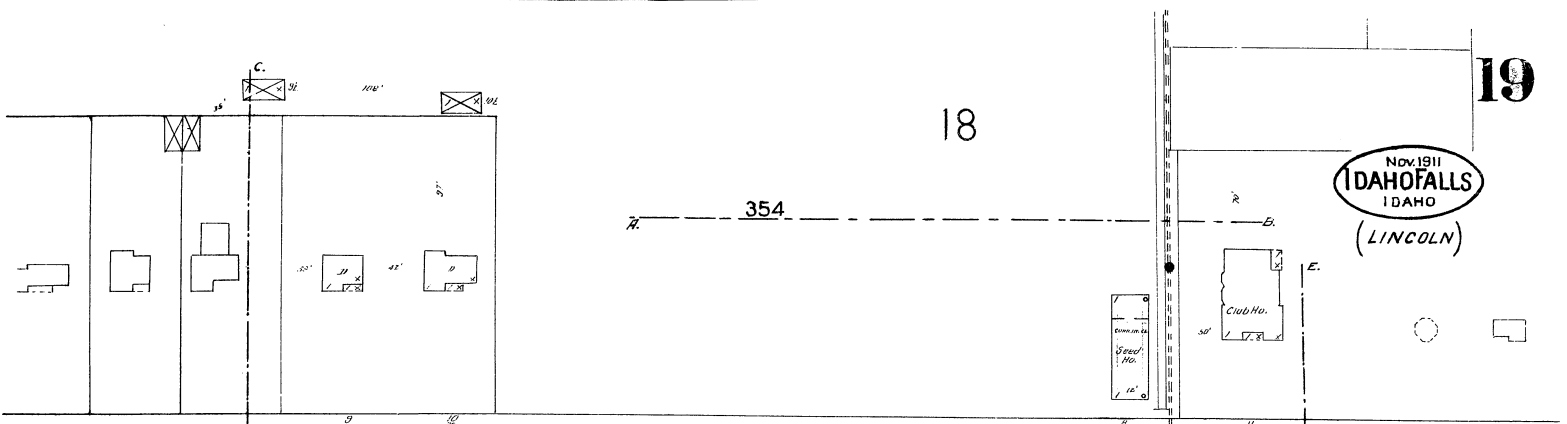


19

Nov. 1911
IDAHO FALLS
IDAHO
(LINCOLN)

18

354

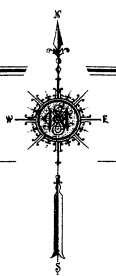
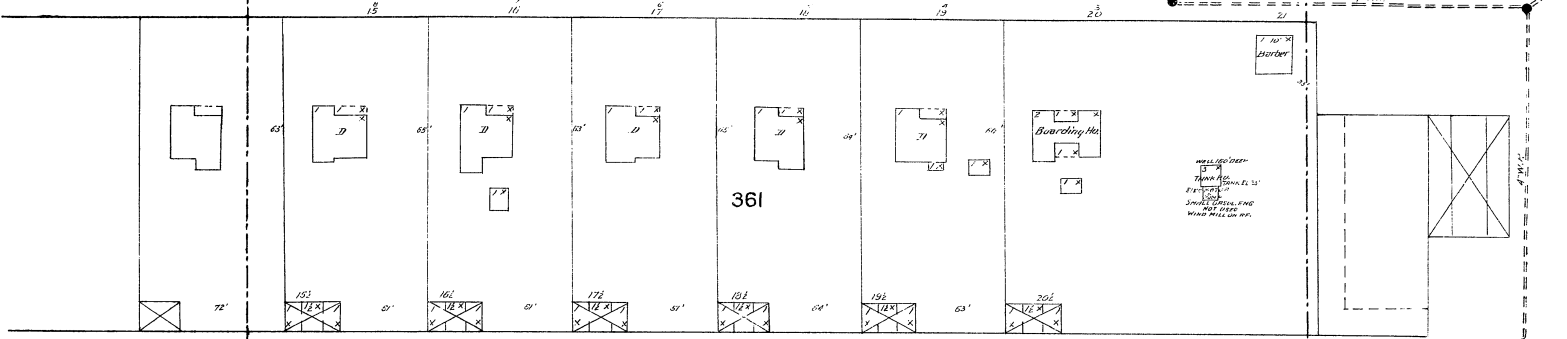


77' 19

LINCOLN

ROAD

20



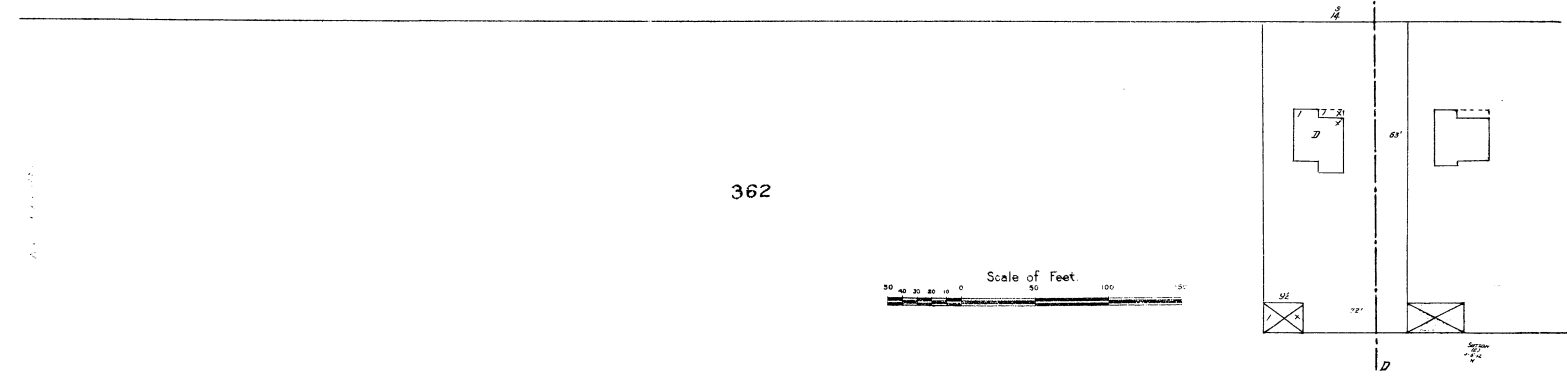
N U E X P O S .

77'

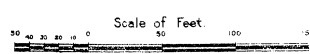
LINCOLN

ROAD

19



362



N O E X P O S .

N O E X P O S .

18

Nov 1911
IDAHO FALLS
IDAHO
(LINCOLN)

20

355

356

20

19

LINCOLN ROAD

Sand Creek

UTAH-IDAHO SUGAR CO'S STABLE SHEDS.

360

359

PRIVATE ROAD

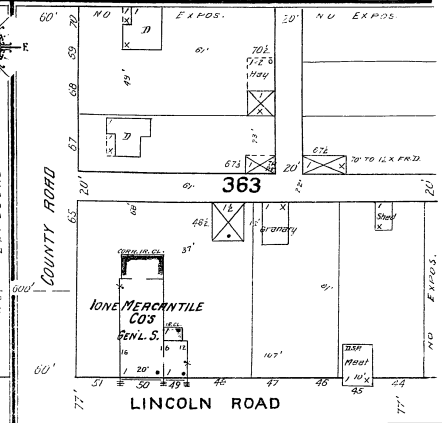
BEEF FIELDS

N U EXPOS. NO EXPOS.

N U EXPOSURE

LINCOLN PUBLIC SCHOOL
HEAT-STEAM LTD-ELEC.

357



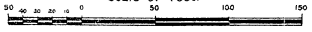
20

LINCOLN ROAD

11 29 12 30 14 31 16 32 18 33 20 34 22 35 24 36 26 37 28 38

358

Scale of Feet.



BEEF FIELDS

B

N U EXPOS.