



IDAHO FALLS

BINGHAM CO. IDAHO

SANBORN MAP COMPANY
Scale 50 Ft. to an inch
11 BROADWAY, NEW YORK

Nov. 1910

Copyright 1906 by the Sanborn Map Co.

KEY
WALLS: 1/2" 1/2" 1/2" 1/2"
FRAMES: 1/2" 1/2" 1/2" 1/2"
SPRING & HOODS
WINDOWS & SHUTTERS
STABLE
BLDG. COLORED: YELLOW: FRAME
" " " " " " " " " " " "
" " " " " " " " " " " "
" " " " " " " " " " " "
" " " " " " " " " " " "
" " " " " " " " " " " "
" " " " " " " " " " " "
" " " " " " " " " " " "
" " " " " " " " " " " "
" " " " " " " " " " " "
" " " " " " " " " " " "
" " " " " " " " " " " "

MADE IN U.S.A.
PAID UP CAPITAL \$1,000,000
RESERVE FUND \$500,000
SALES 1910 \$1,000,000

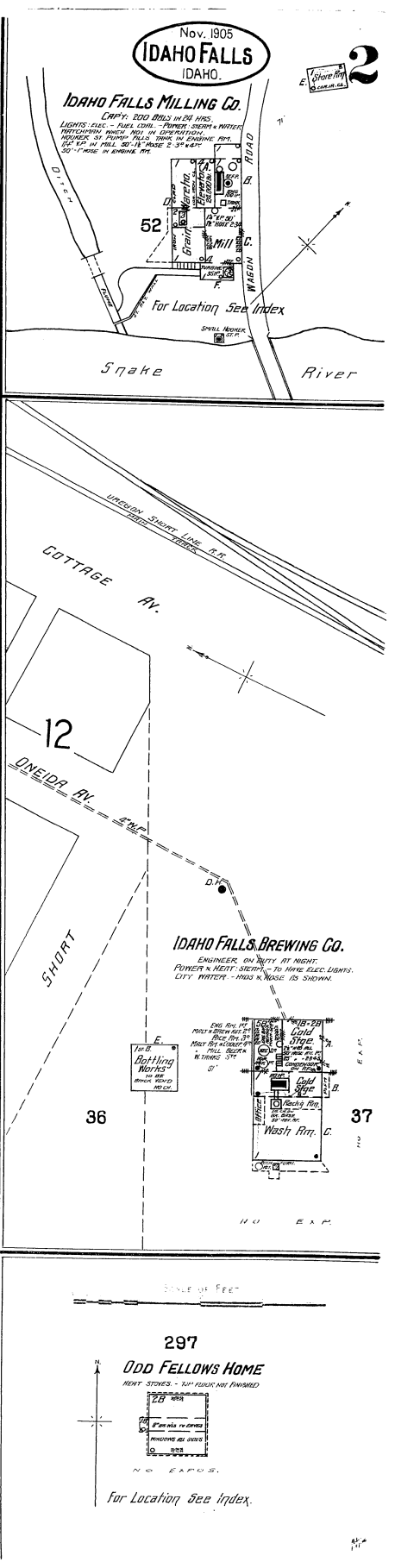
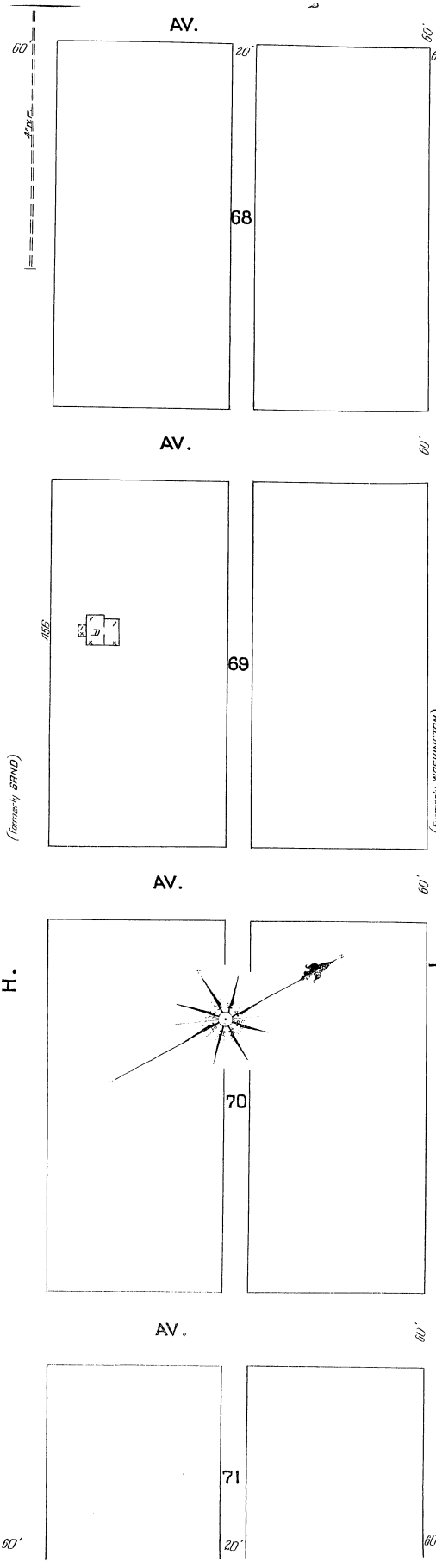
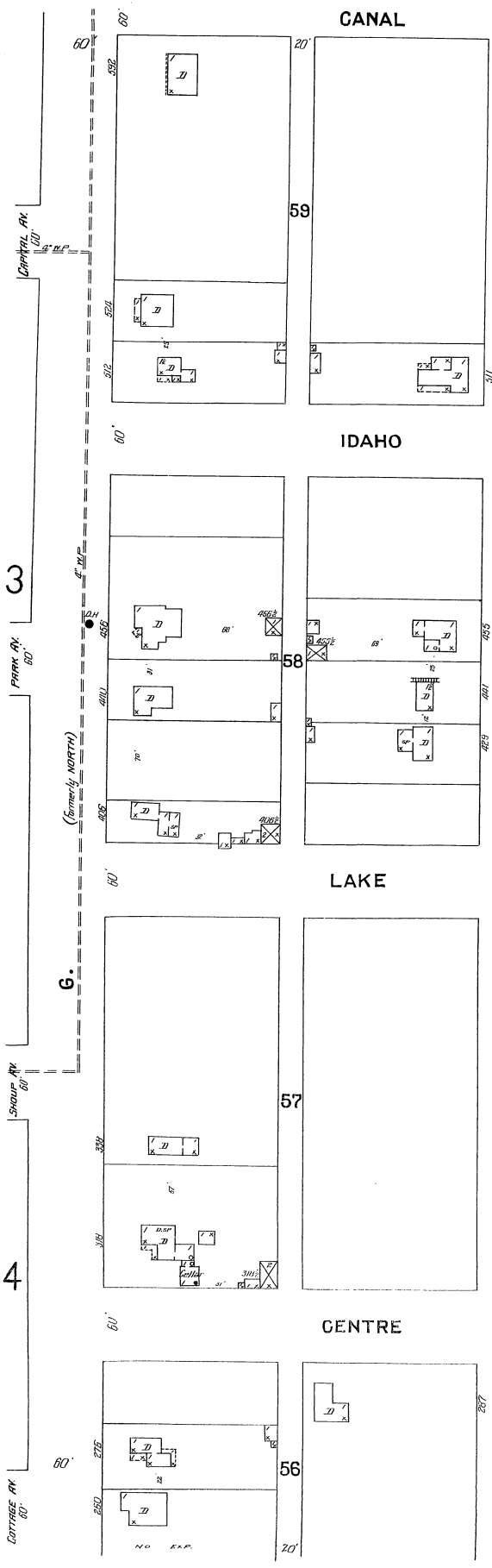
POPULATION: 5000. PREV. WINDS: NE & S.
WATER FACILITIES: City Water System. Water from Snake River by power canal to power house (see sewer map) thence by Smith White 7 1/2" triple power pump run by 100 h.p. turbine direct into mains. Capacity of pump 660,000 gallons in 24 hours. Pressure 80 to 100 lbs. 7" suction - 8" 6" 4" light steel distributing mains - 40 double hydrants.
FIRE DEPT. Volunteer. Chief and 25 members. 1 hand chemical engine 100 gallons capcy. 1 hook and ladder truck and 2 hose carts with 300 ft. & 250 ft. hose all kept at City Hall and 1 hose cart with 250 ft. hose near New Brooks Hotel.
Fire alarm by bell at house house.
Fire limits shown by heavy red line on index map.
Grades level. - Lights electric.

INDEX.

STREETS	INDEX	STREETS	INDEX
A	201-299 4	G	201-299 4
B	200-298 9	H	200-299 2
C	200-298 9	I	201-299 4
D	200-298 9	L	100-299 12
E	200-299 4	M	100-299 4
F	200-299 4	N	100-135 7
G	201-299 4	O	100-135 7
H	200-299 2	P	100-299 4
I	201-299 4	R	100-299 6
J	201-299 4	S	100-299 4
K	201-299 4	T	100-299 4
L	100-299 12	U	100-299 4
M	100-299 4	V	100-299 4
N	100-135 7	W	100-299 4
O	100-135 7	X	100-299 4
P	100-299 4	Y	100-299 4
Q	100-299 4	Z	100-299 4

* Indicates only one side of Street shown.

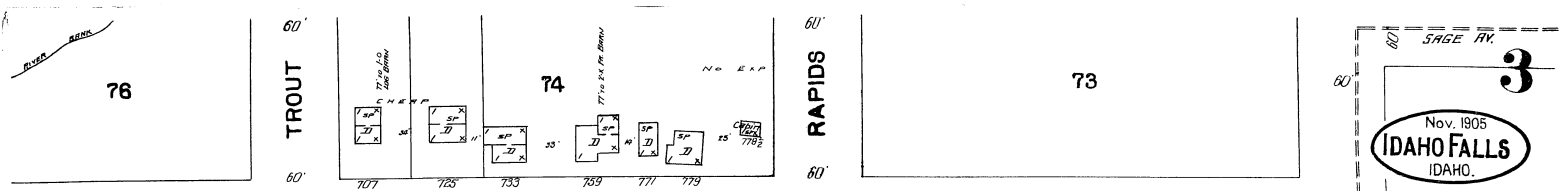
SPECIALS.	INDEX
Idaho Falls Plating Mill	14
Steam Laundry	14
Sugar Co., Beet Sugar Factory at Lincoln	16
Iona Warehouse, Grain and Merchandise	16
Latter Day Saints Meeting House	9
Mills, G. W. Building	9
New Brooks Hotel	8
Nishoff Grain Co., Elevator	8
Old Fellows Home	9
O. S. L. R. R. Freight House	9
Passenger Depot	12
Round House	9
Porter Hotel	9
Presbyterian Church	9
Princeton Incubator Co., Factory	5
Register, The, Printing	8
Samsel Block	10
Scott Block	10
Snake River Valley Plating Mill	14
Stadelaker Bros. Co.	10
Swedish Mission Church	9
Times, Printing	9
Trinity M. E. Church	9
Wright Block	8
Zion's Co-operative Mercantile Institute	5



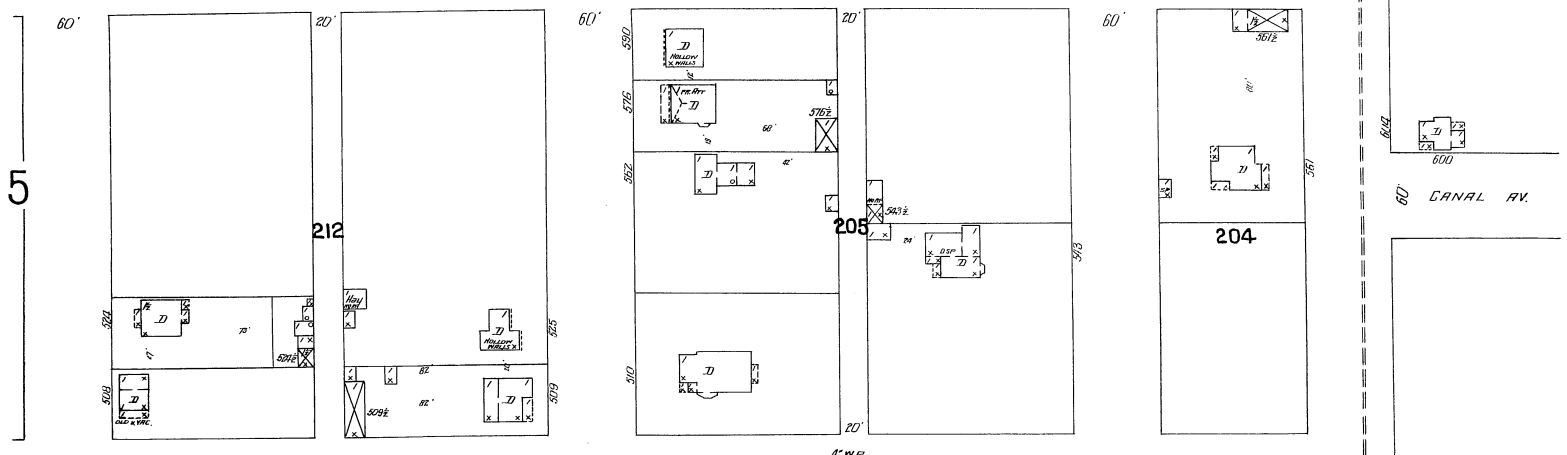
3

4

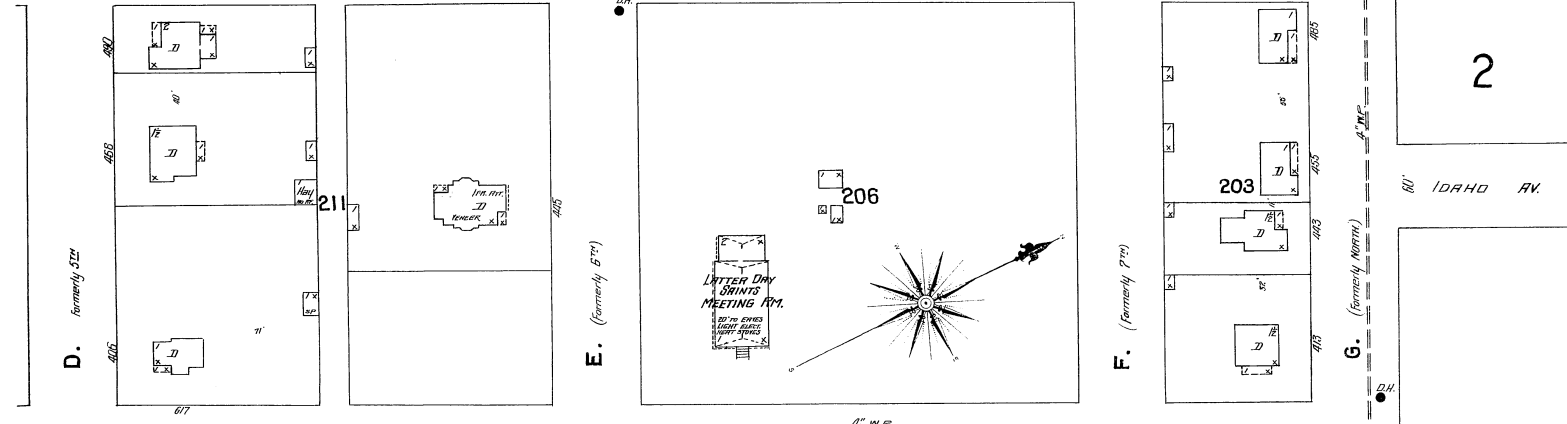
2



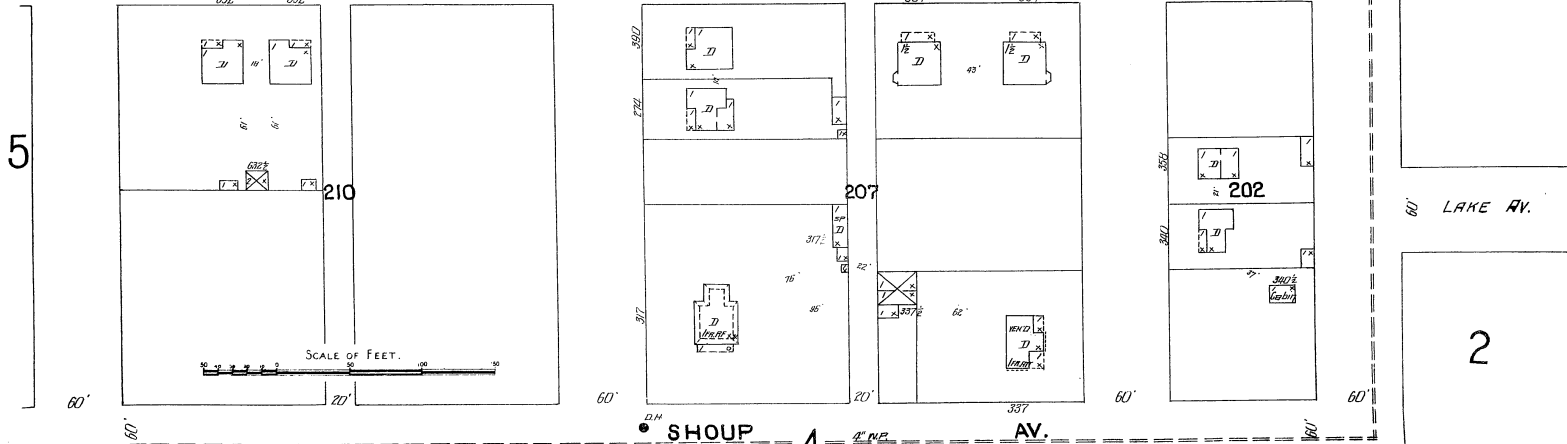
TROUT RAPIDS WESTERN AV.



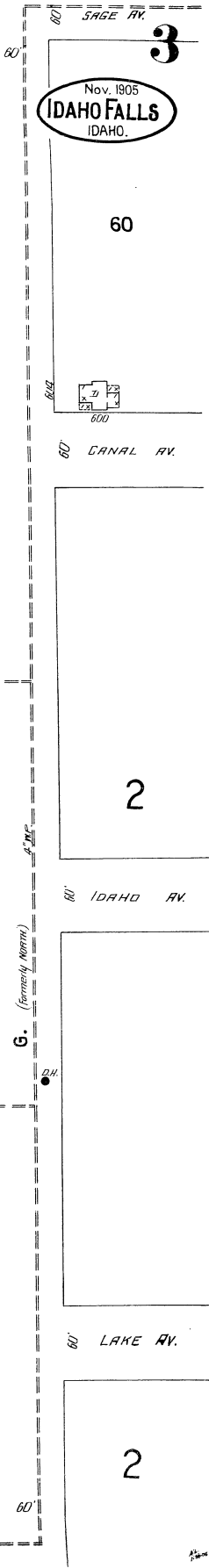
CAPITAL AV.

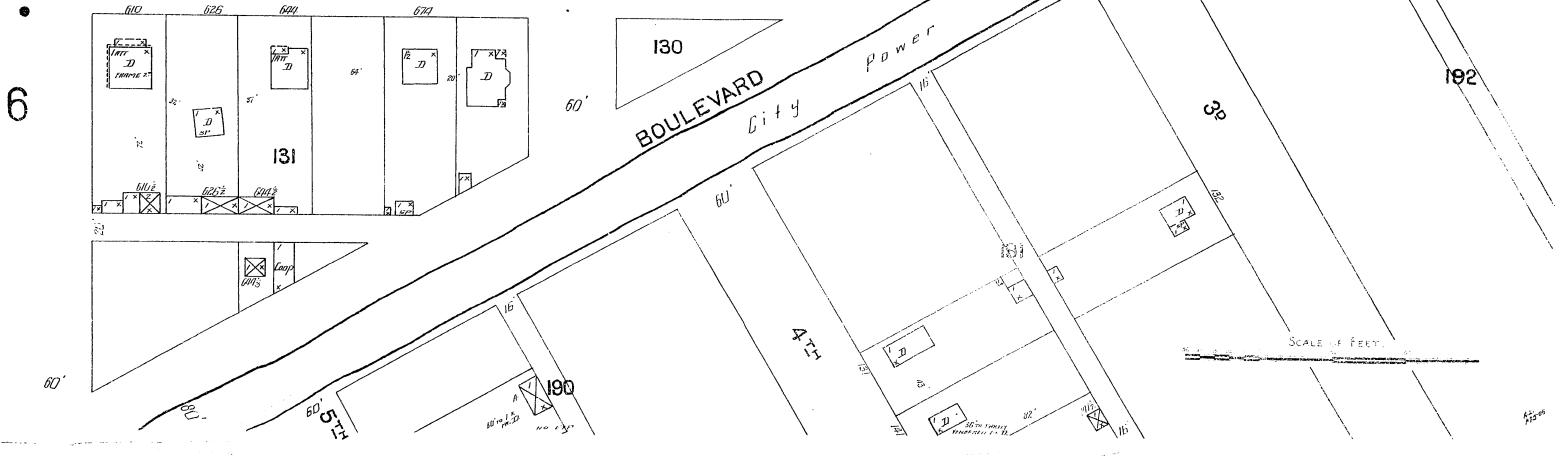
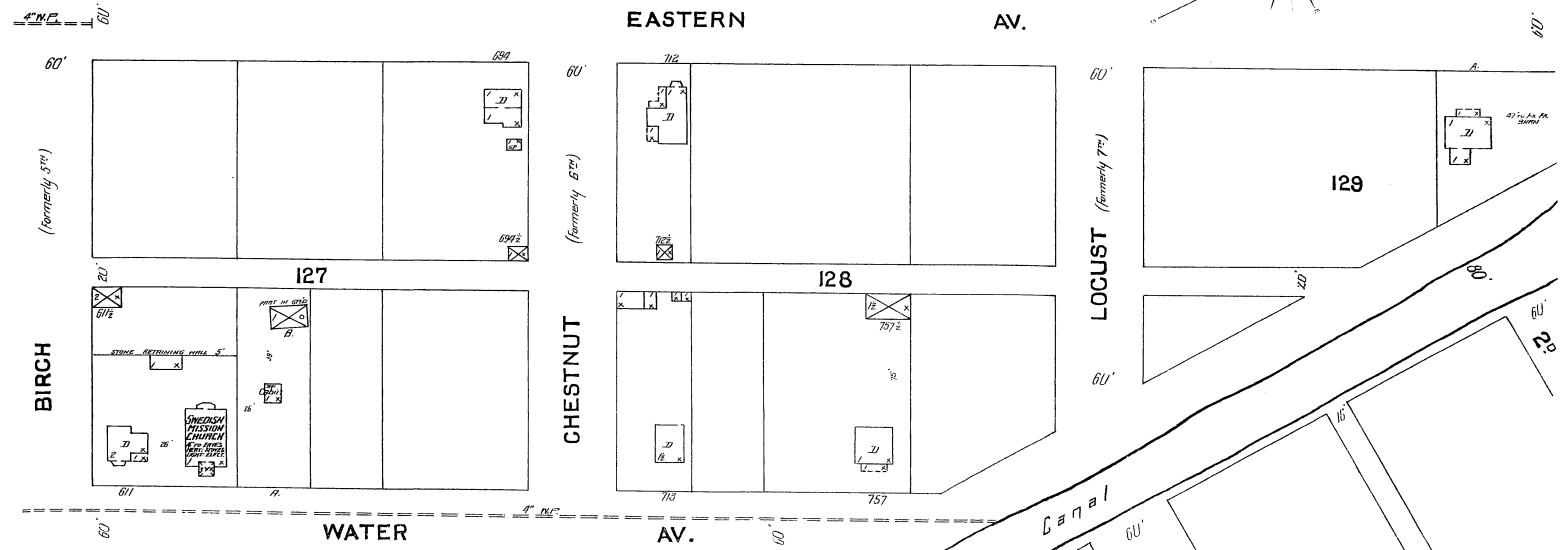
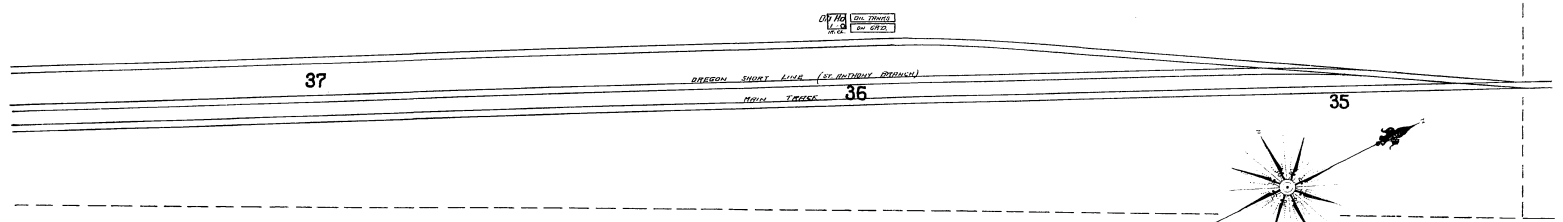
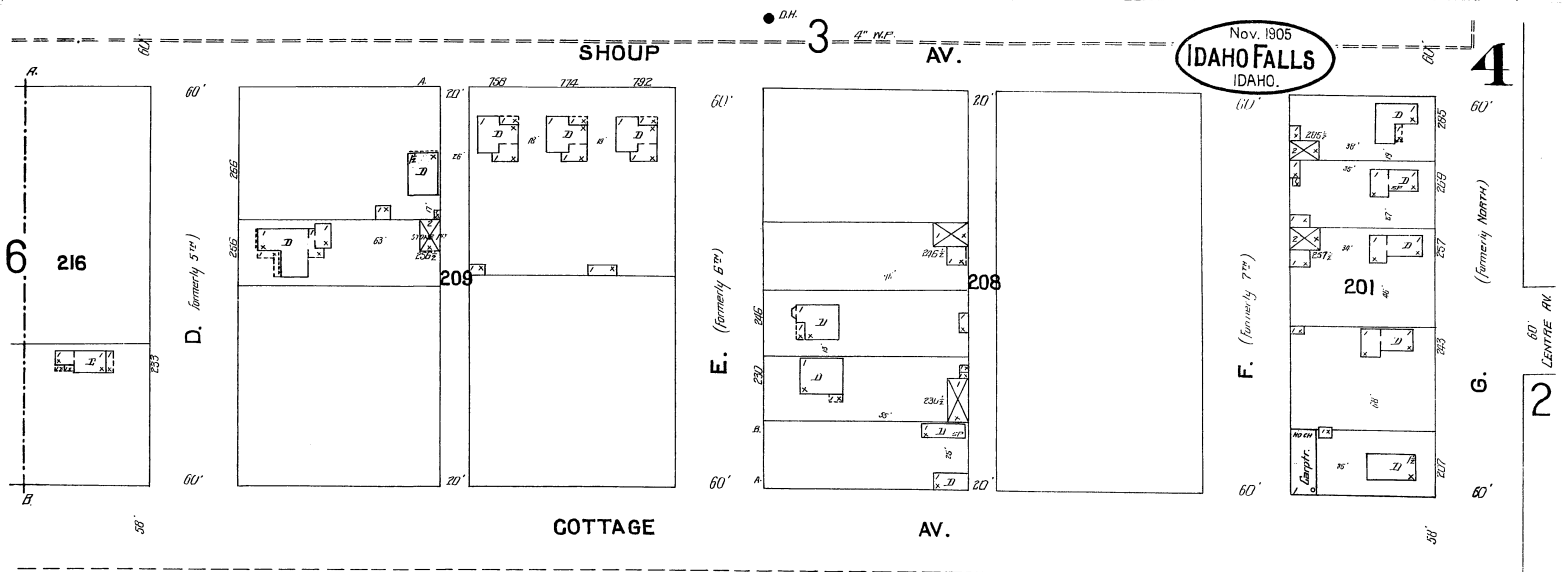


PARK AV.

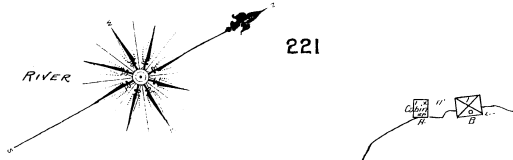


SHOUP AV.

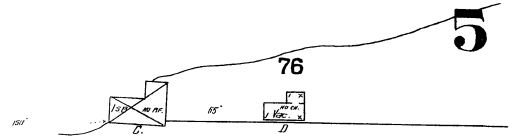




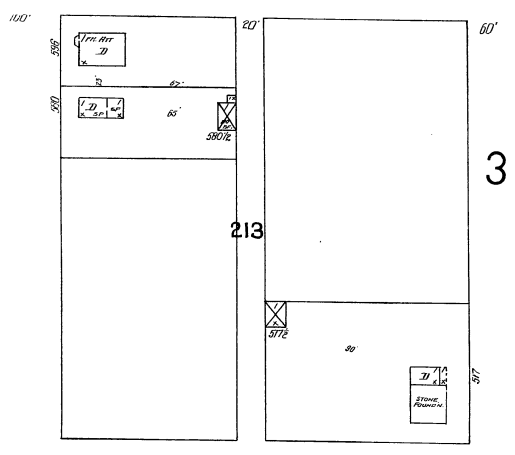
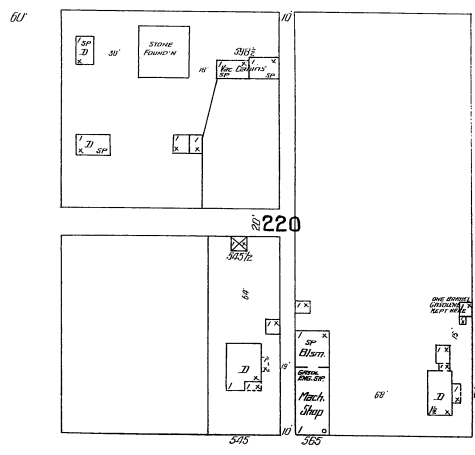
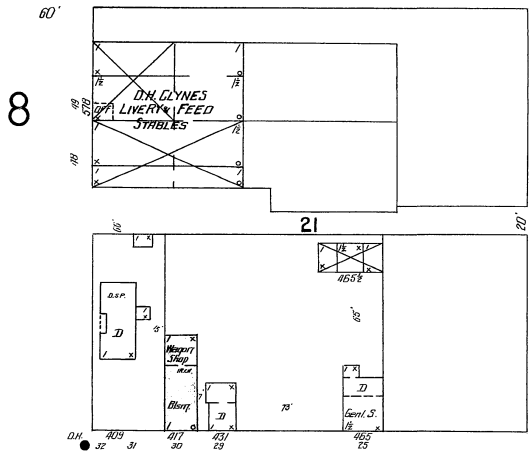
222
ROCKY BED OF SNAKE RIVER



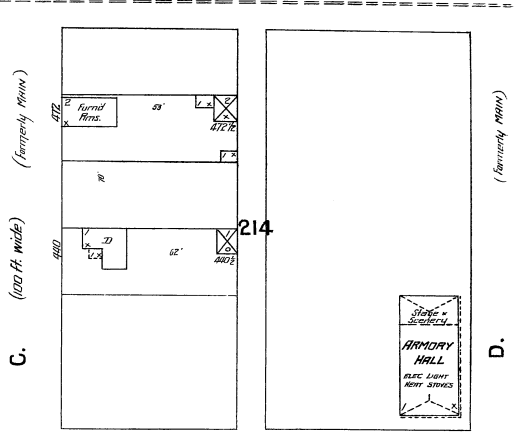
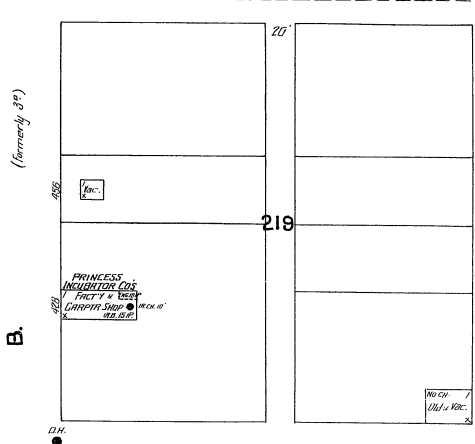
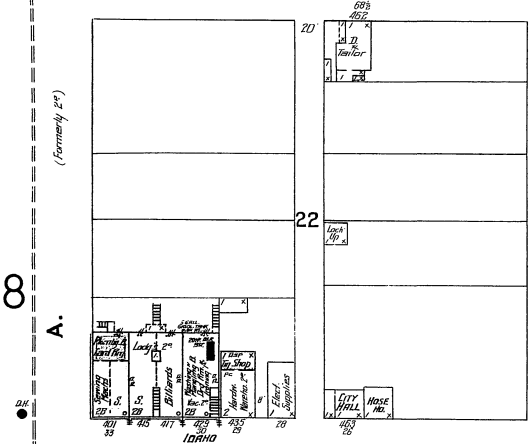
WESTERN AV.



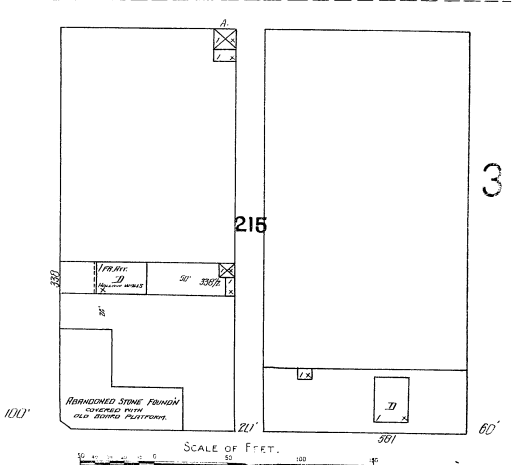
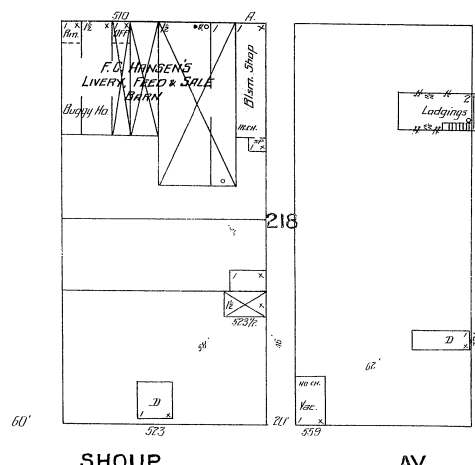
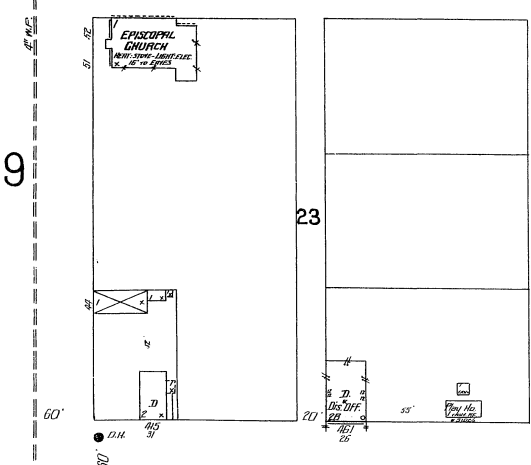
Nov. 1905
IDAHO FALLS
IDAHO.



CAPITAL AV.

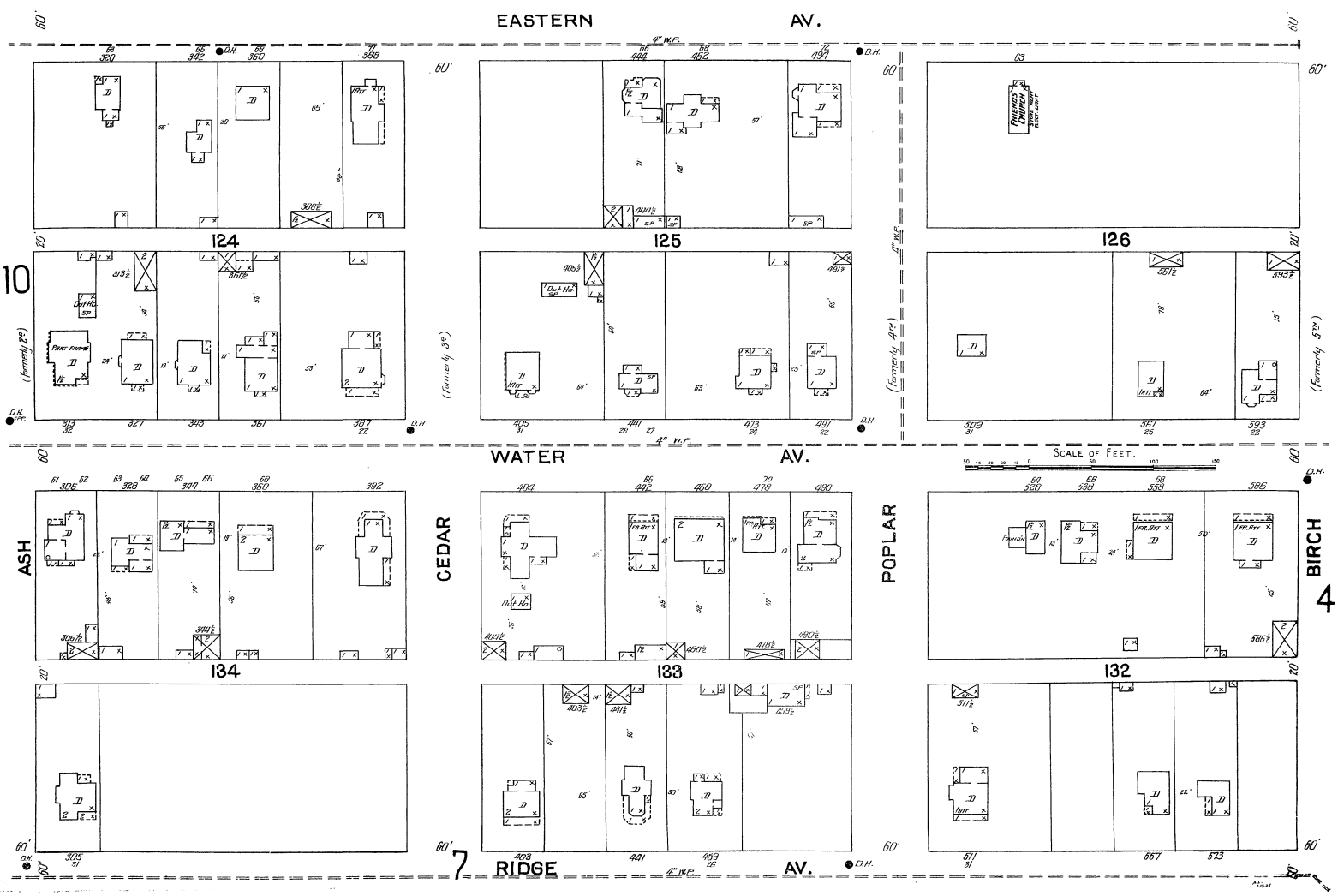
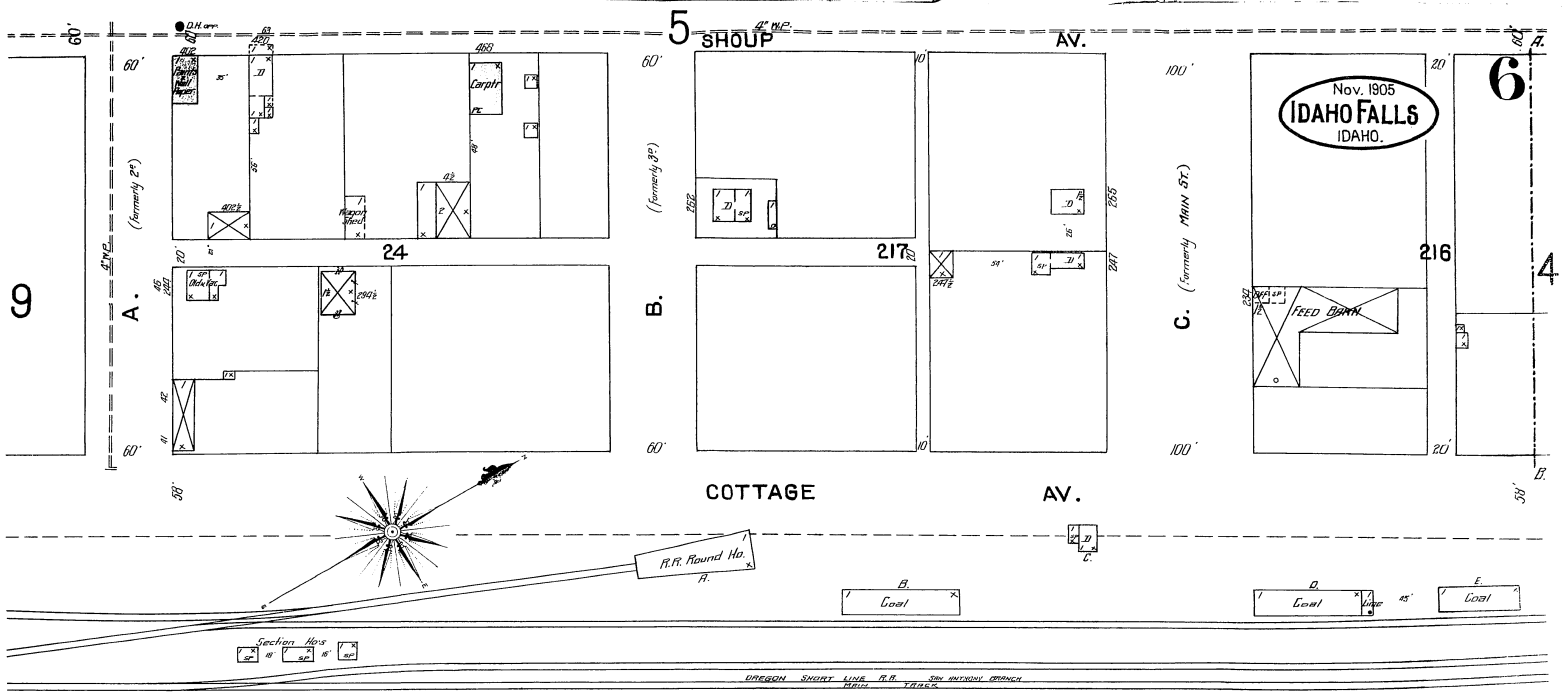


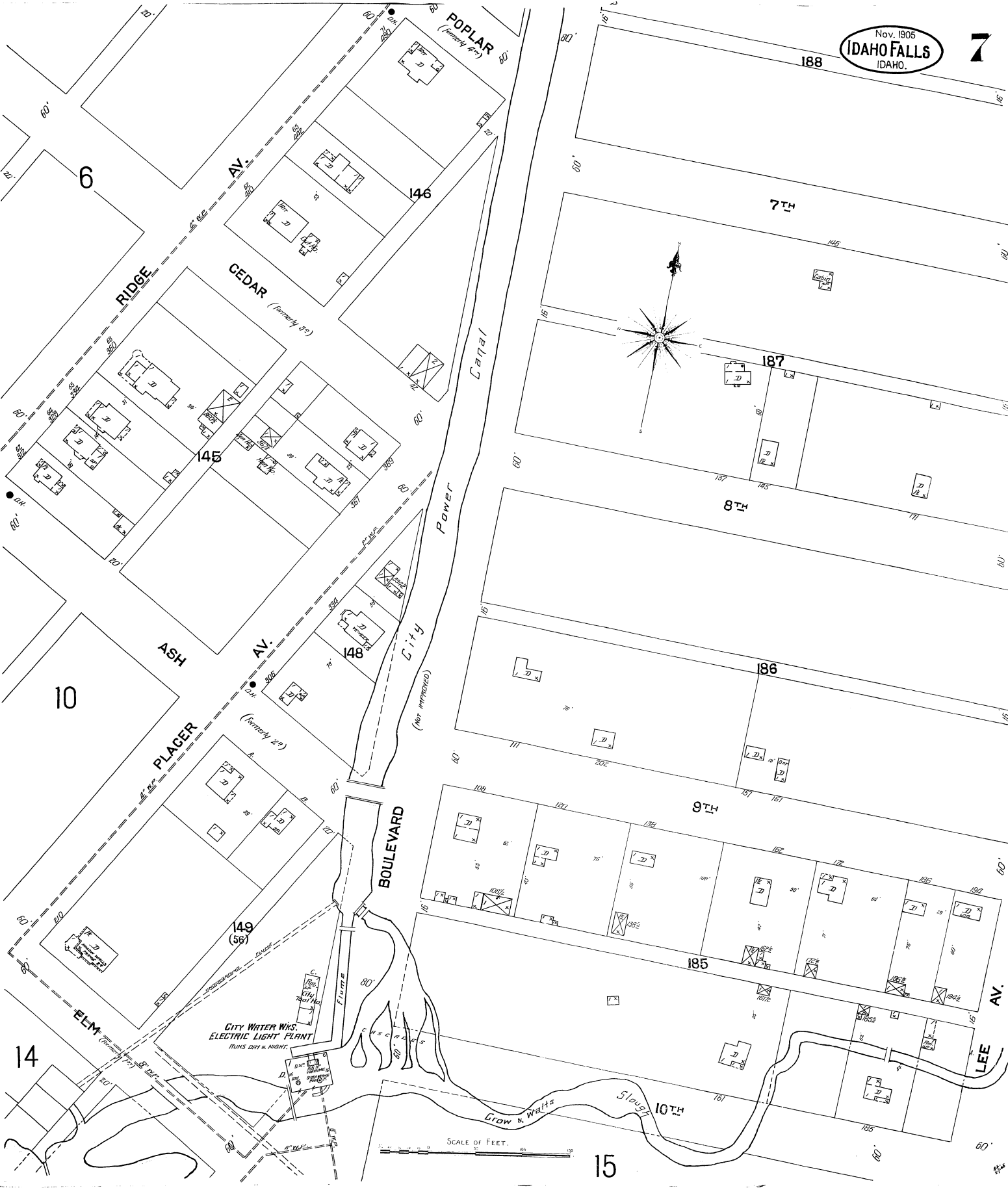
PARK AV.



SHOUP AV.

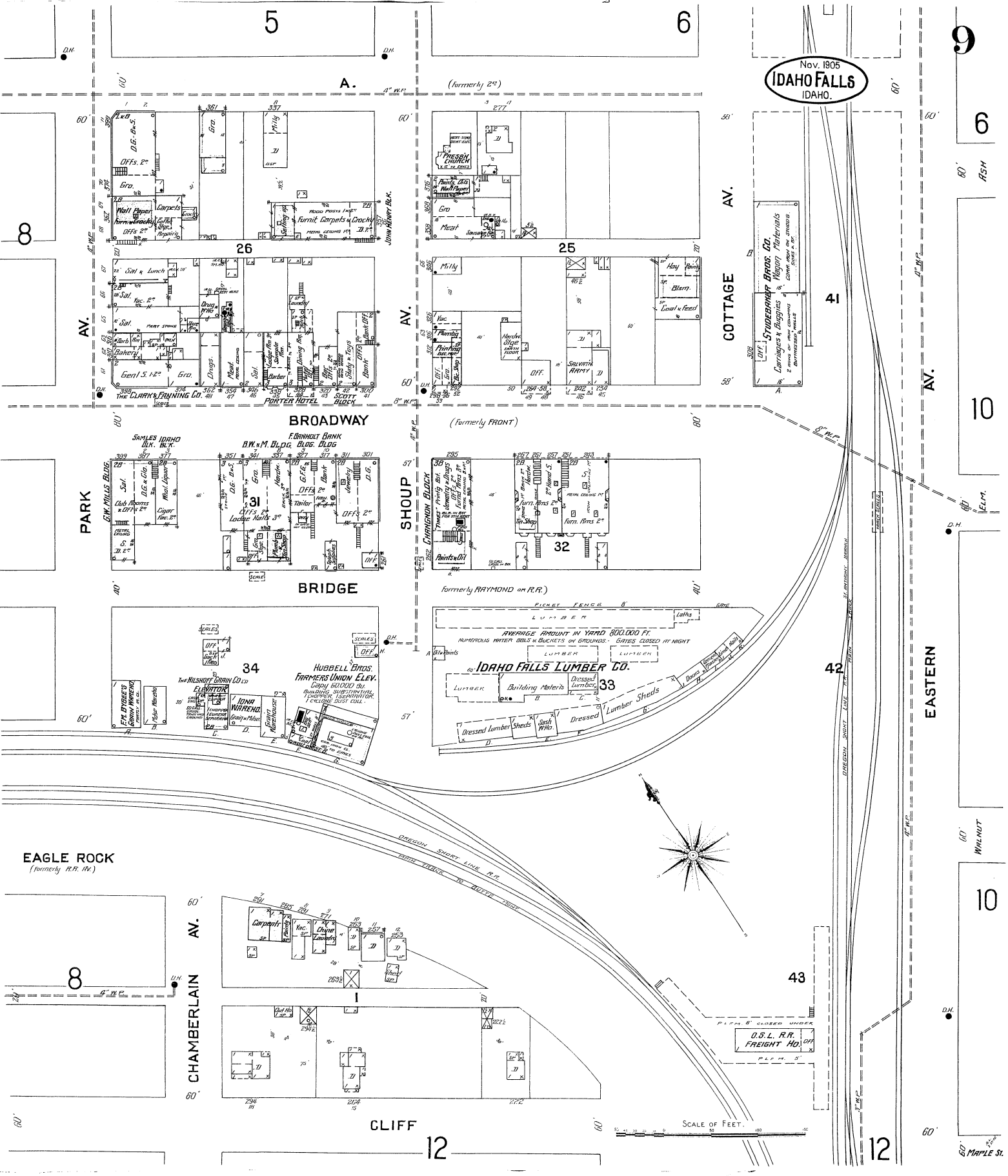
SCALE OF FEET.

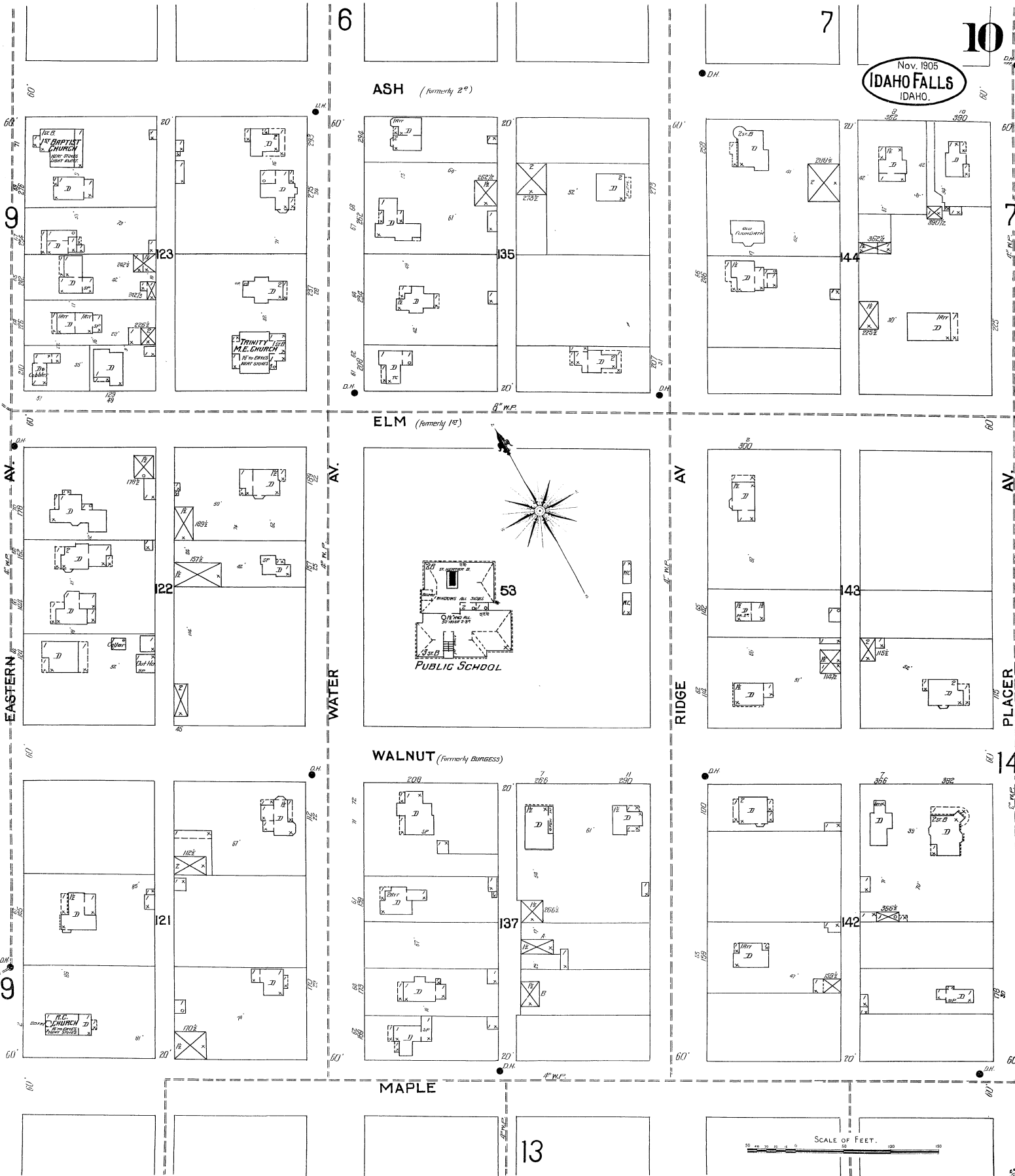




CITY WATER WKS
ELECTRIC LIGHT PLANT
RUNS DAY & NIGHT.

SCALE OF FEET.





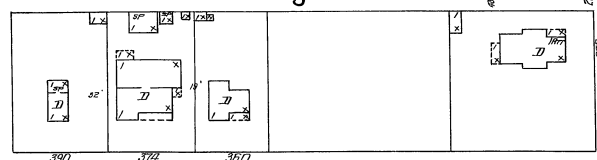
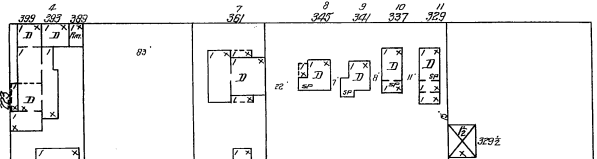
Nov. 1905
IDAHO FALLS
 IDAHO.

53
 PUBLIC SCHOOL

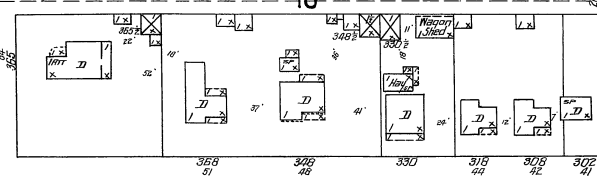
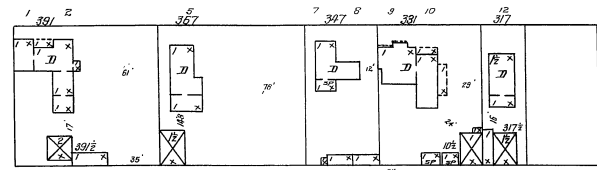
SCALE OF FEET.
 0 10 20 30 40 50 60 70 80 90 100

8

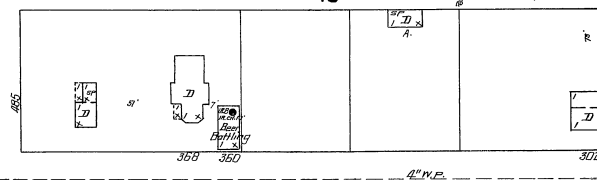
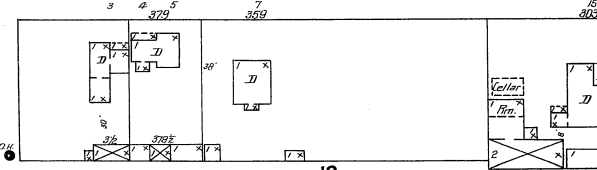
CLIFF



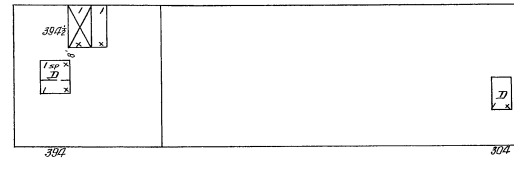
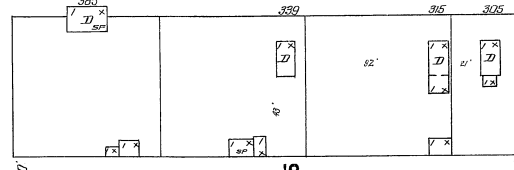
BASALT



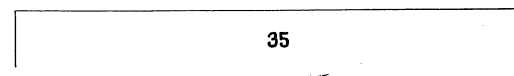
LAVA



HILL



SHORT



60'

60'

60'

60'

AV.

AV.

CAPITAL

PARK

60'

60'

AV.

CAPITAL

60'

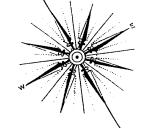
60'

SHRUBS

RIVER

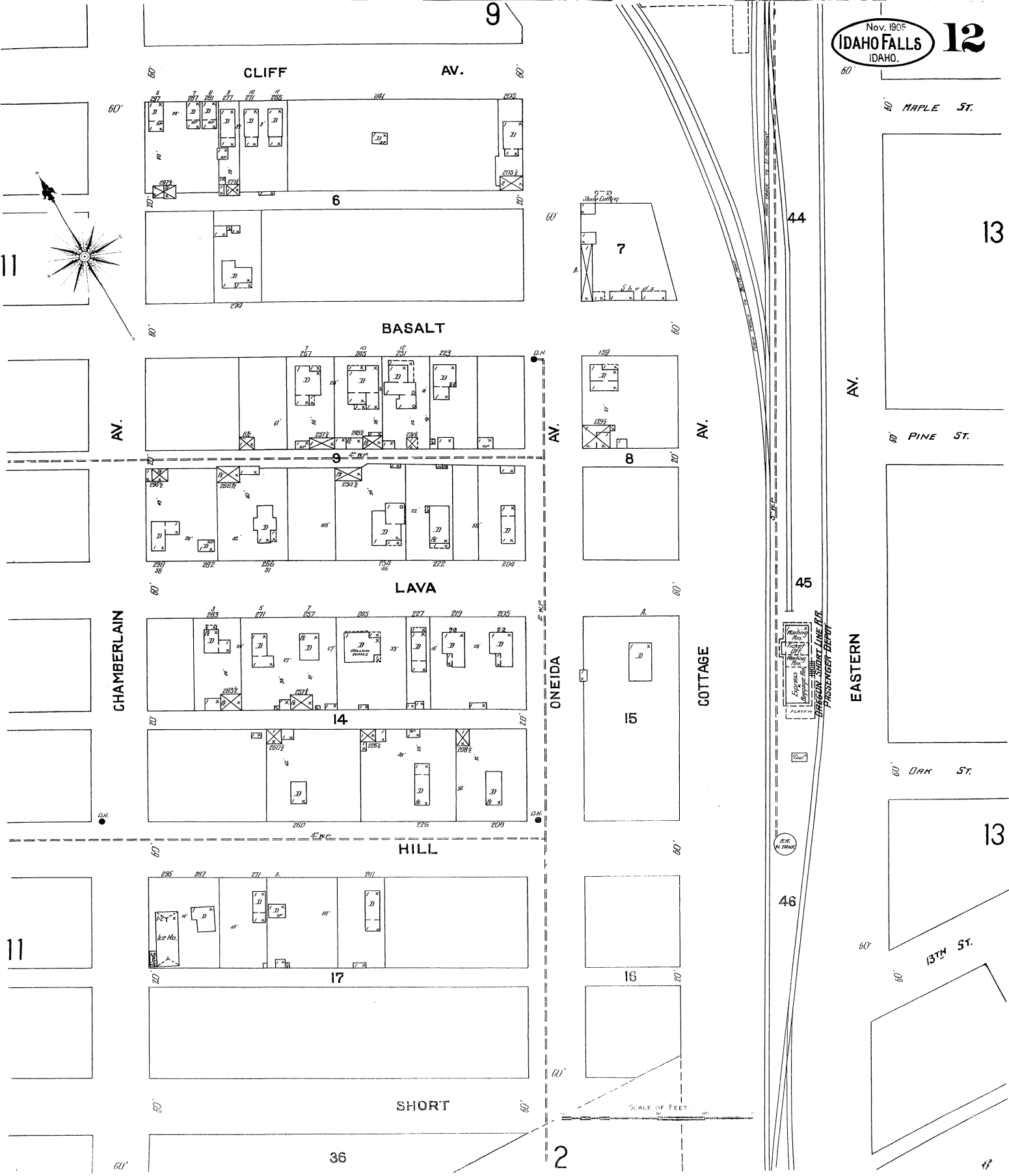
CITY WATER WAS
BY RESERVE
OF THIS TRADING STORE PLUMET
OF THIS FALL BY ROOF NOT USED

LEWIS PLANT BREWING CO.
Ice House
Fermenting Bk.
Wash. St.
Milling Co.
Brewery
Distillery
Tannery
Lumber Co.
Saw Mill
Paper Mill
Cotton Gin
Woolen Mill
Shed
Stable
Barn
Garage
Auto Shop
Blacksmith
Carpenter
Electrician
Plumber
Painter
Mason
Cabinet Maker
Tailor
Hatter
Shoemaker
Barber
Dressmaker
Tailor
Hatter
Shoemaker
Barber
Dressmaker



12

12



11

9

60'

60' MAPLE ST.

13

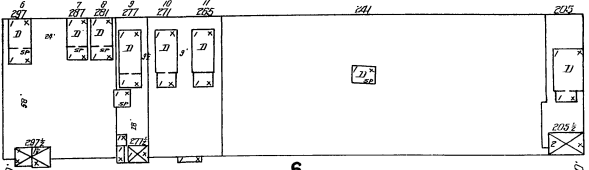
60'

CLIFF

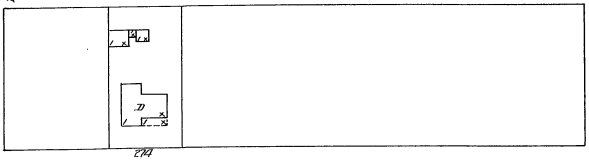
AV.

60'

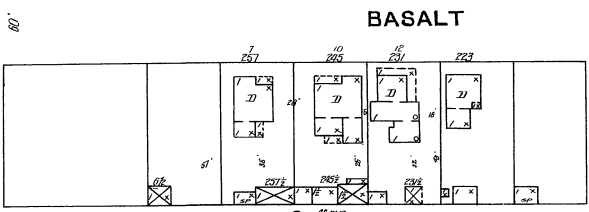
60'



6



7



8

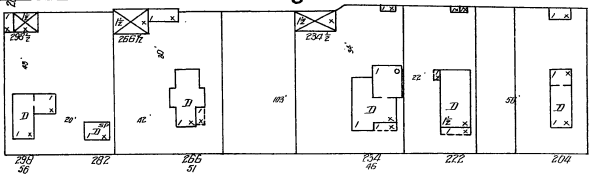
AV.

AV.

AV.

AV.

60' PINE ST.



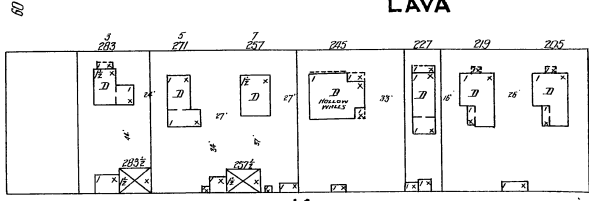
14

CHAMBERLAIN

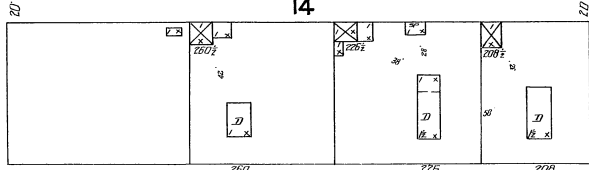
ONEIDA

COTTAGE

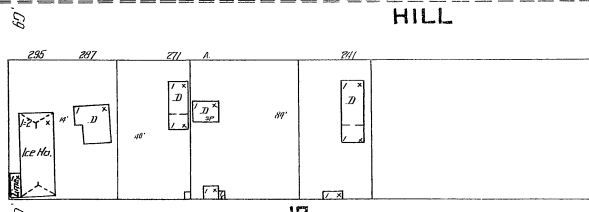
EASTERN



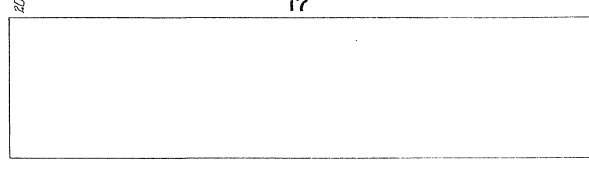
15



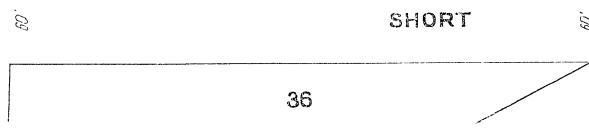
17



36



16



2

HILL

SHORT

45



PASSENGER DEPOT

46

44

43

60' OAK ST.

60' 13TH ST.

13

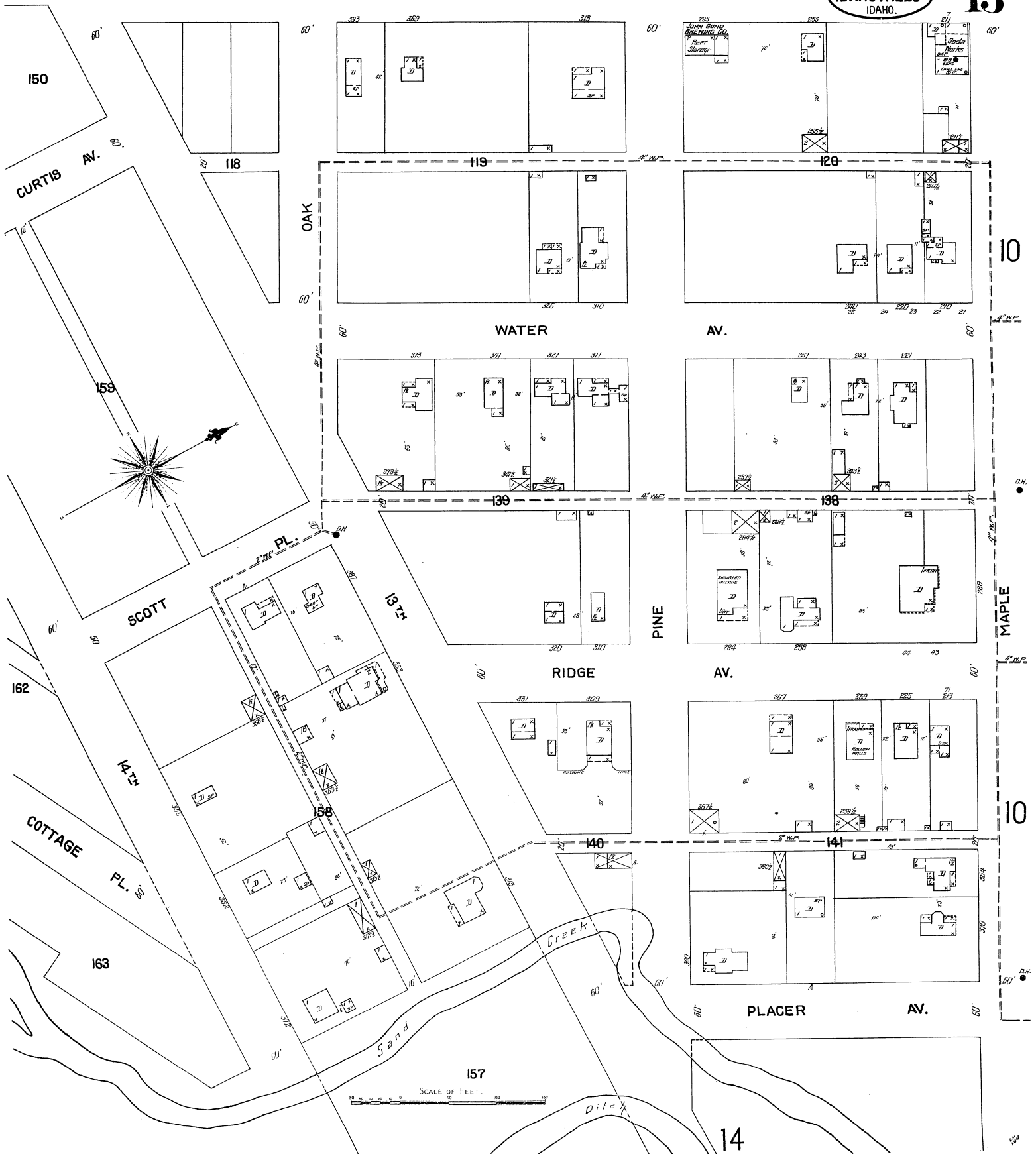
SCALE OF FEET

EASTERN (NOT DEFINED) 12

AV.

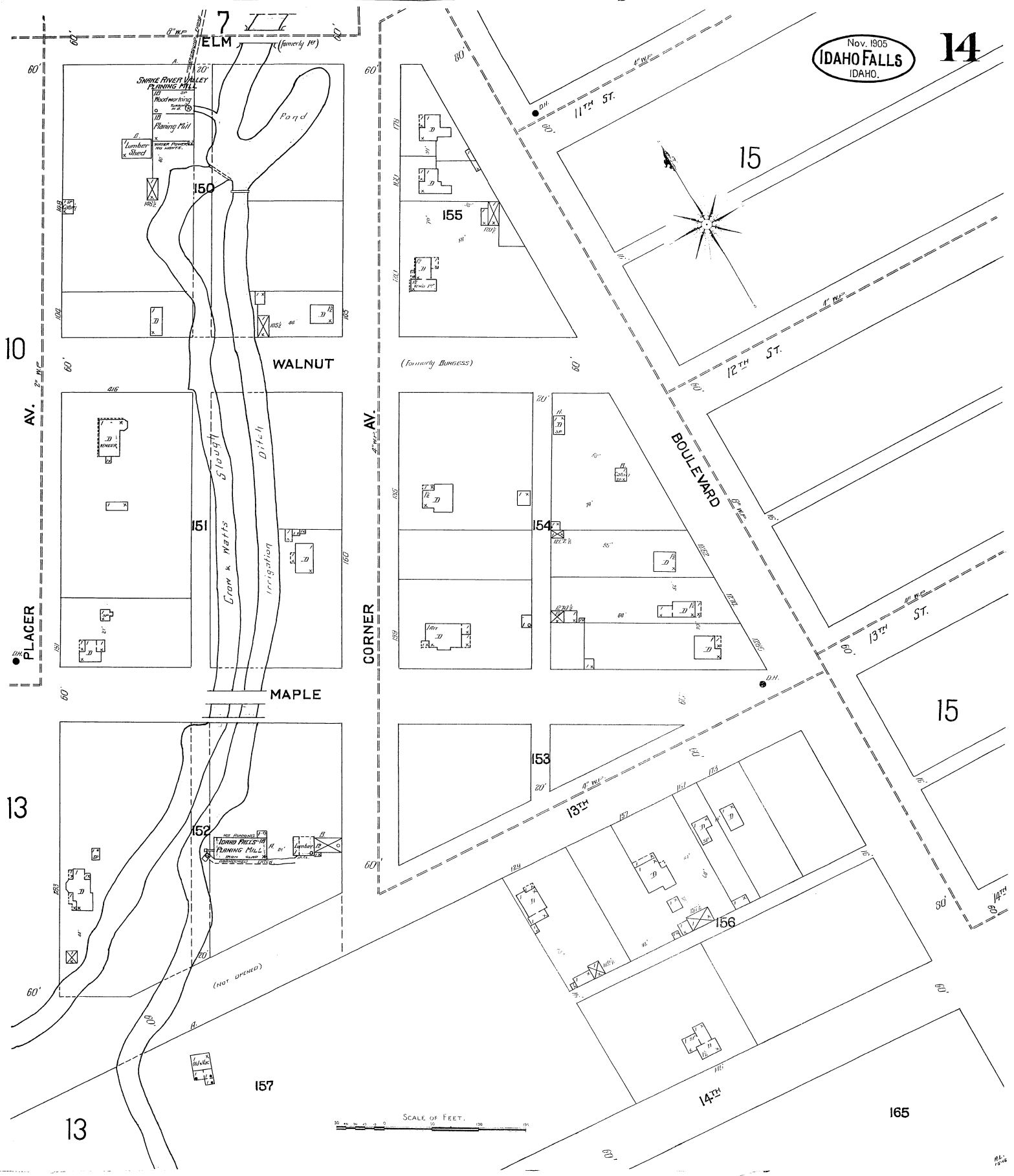
Nov. 1905
IDAHO FALLS
IDAHO.

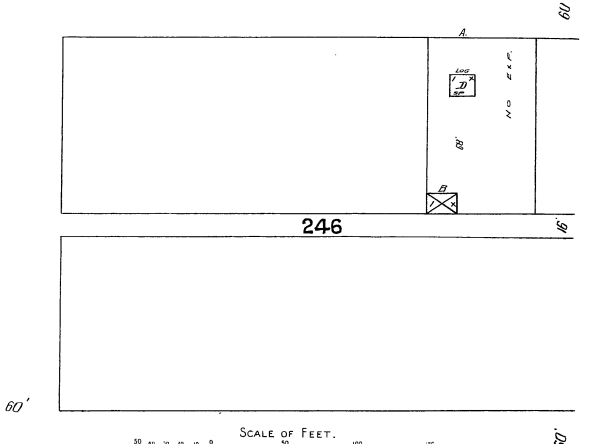
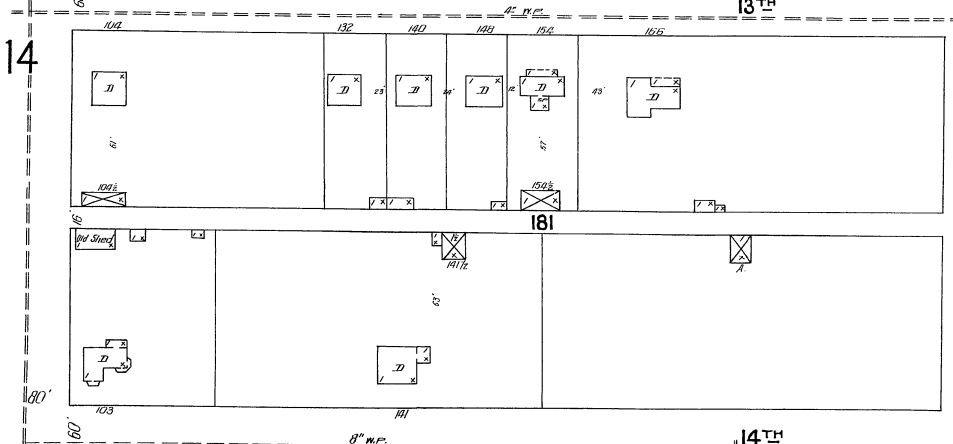
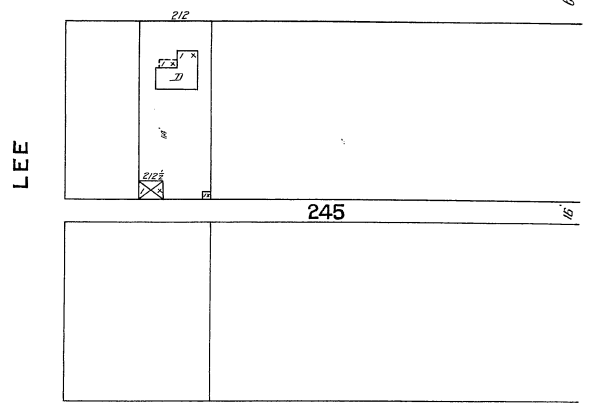
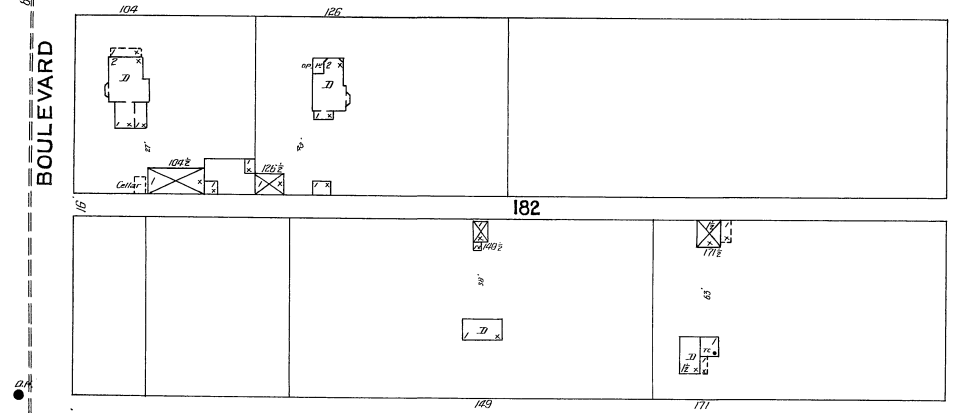
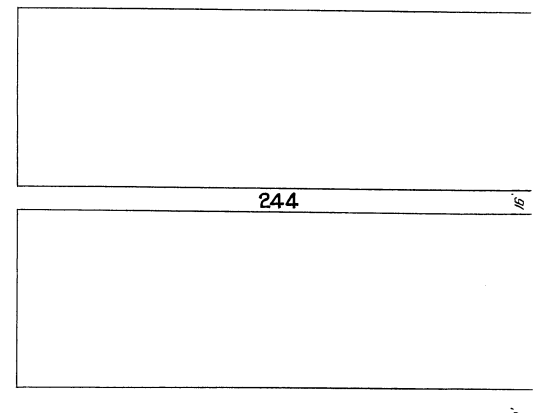
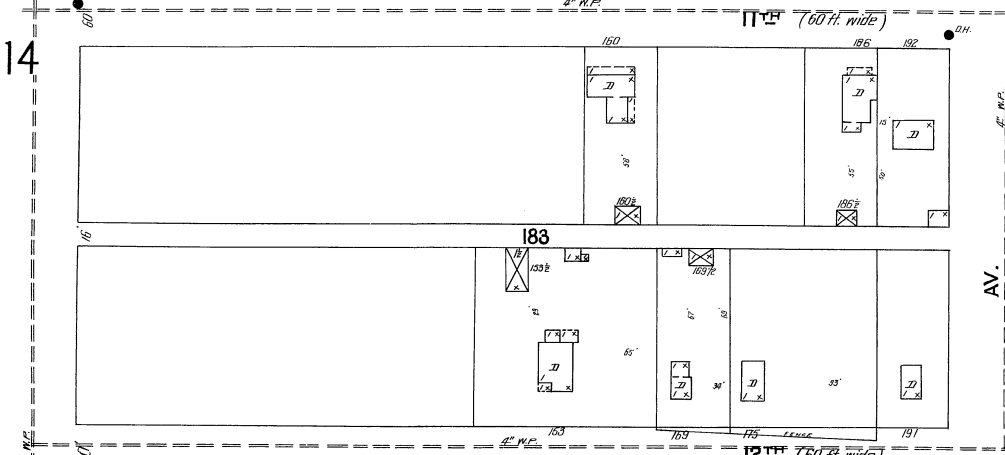
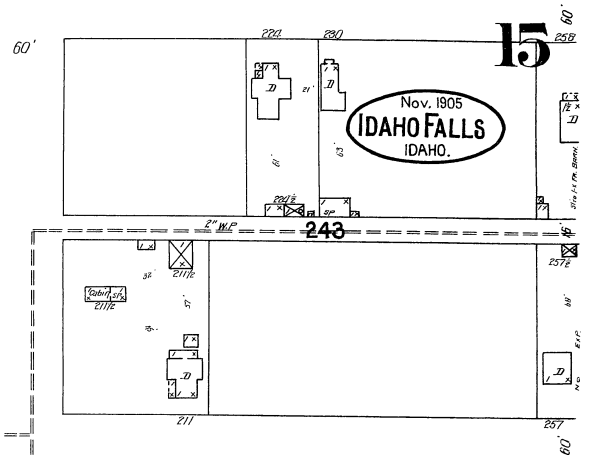
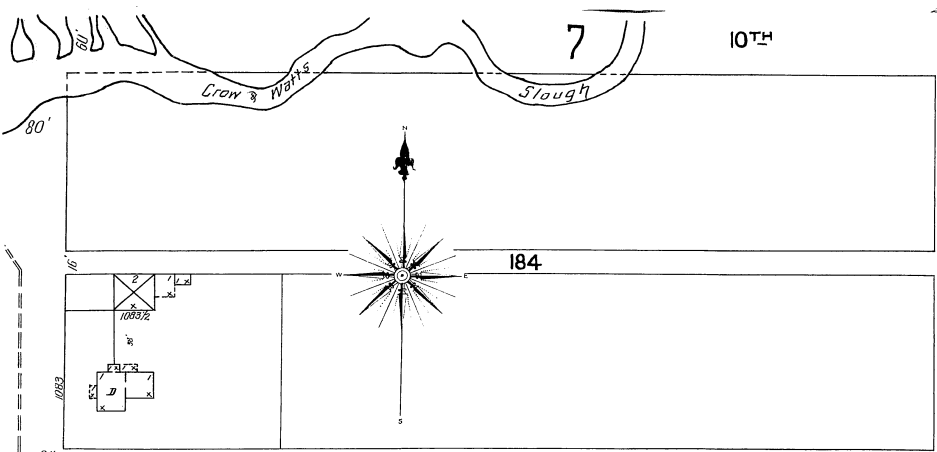
13



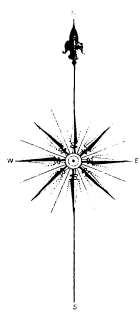
SCALE OF FEET.

14





SCALE OF FEET.



Located at LINCOLN 4 Miles N.E. of P.O.

**THE IDAHO SUGAR COMPANY'S
 BEET-SUGAR FACTORY.**

HEIGHT FACTORY - POWER: STEAM - FUEL: COAL - HEAT: HOT AIR IN OFFICE.
 LIGHTS: ELECTRIC - WATER: FROM SAND CREEK BY TWO STILLWELL "BURGESS"
 STEAM PUMPS 14-10-10 - NO HYDRO-PNEUMATIC APPARATUS - MADE TO BE AFFID
 TO PUMPS - MAIN BUILDING IS OF STEEL FRAME CONSTRUCTION WITH 12"
 BRICK (USING AND CONCRETE ROOF - CEMENT FLOOR.
 ABOUT 200 EMPLOYEES IN SEASON - CAPACITY: 600 TONS PER DAY
 - FACTORY BUILT 1903.

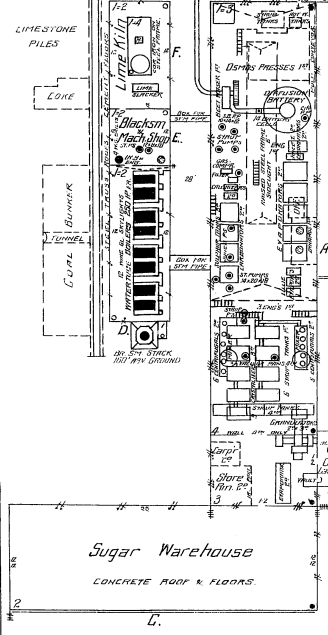
351

Open Beet Streets

Pulp Sila

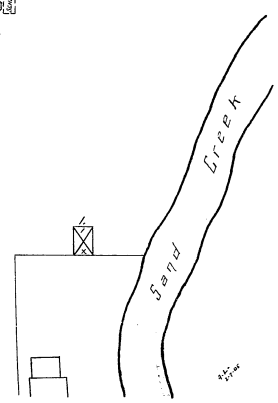
OPEN PLANKED BASIN
 305' LONG

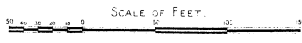
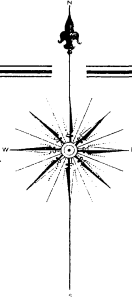
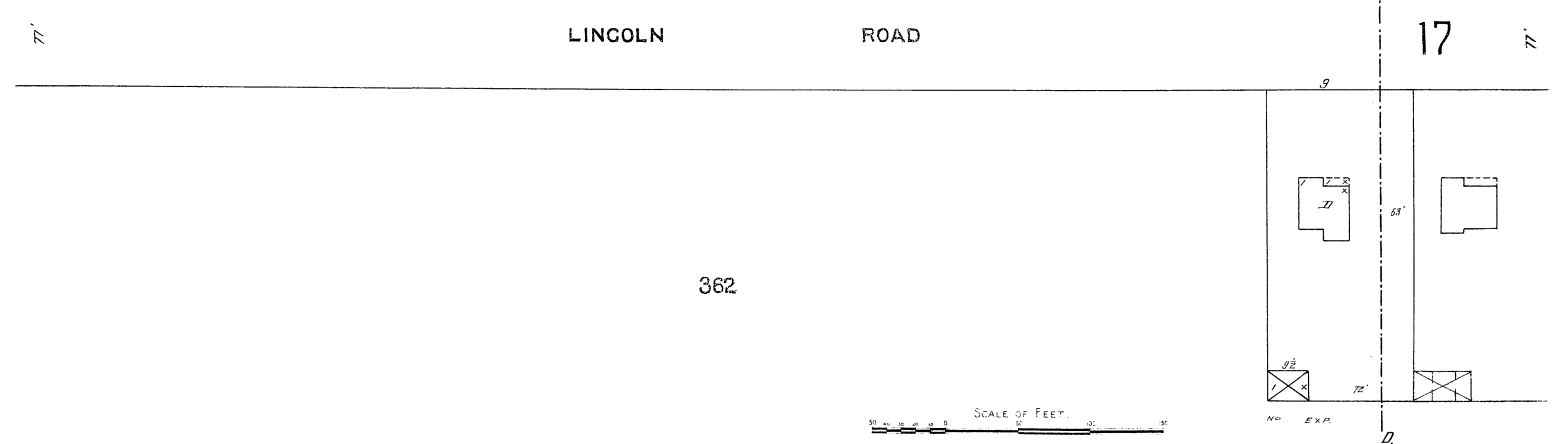
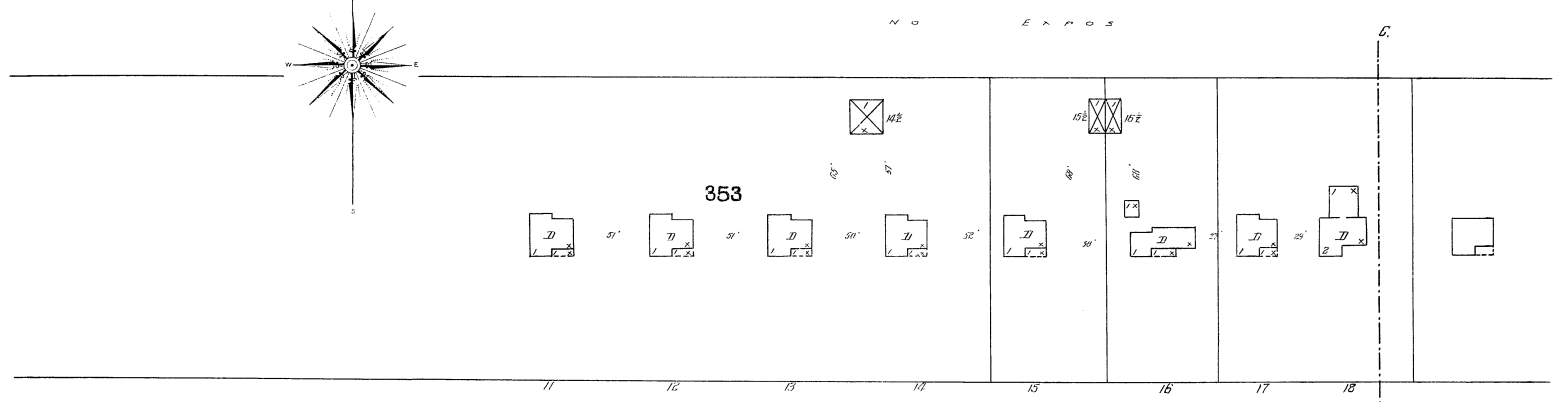
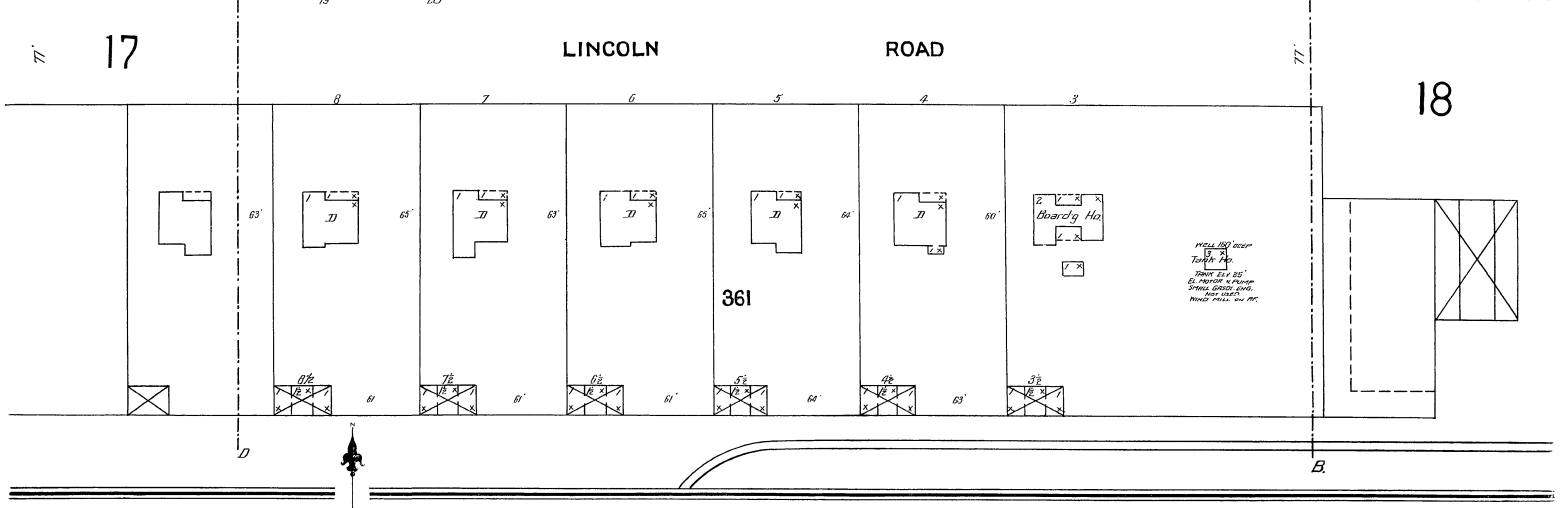
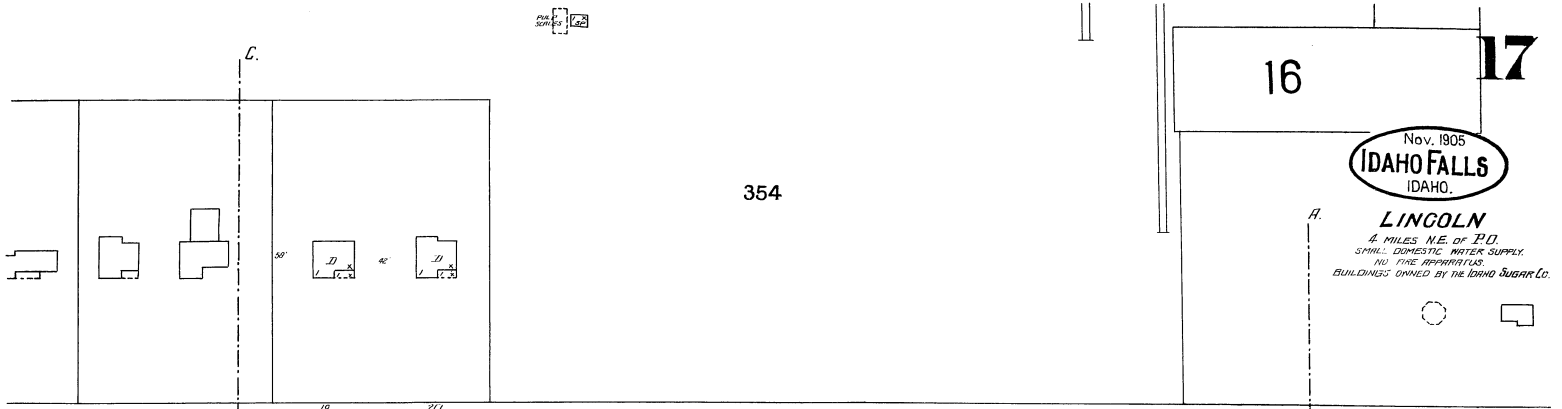
352



17

18





16

18



LINCOLN
4 MILES N.E. OF P.O.
SPRINKLING DOMESTIC WATER SUPPLY.
NO. ONE APPARATUS.
BUILDINGS OWNED BY THE IDAHO SUGAR CO.

355

356

Creek

Boarding

Lodgings

17

LINCOLN

ROAD

18

Sand

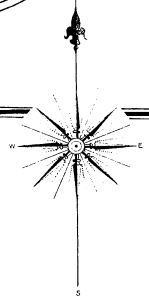
IDAHO SUGAR CO'S STABLE & SHEDS

360

359

B E E T F I E L D S

N O E X P



357



LINCOLN PUBLIC SCHOOL
HEAT BY R.R. - LIGHT ELECTRIC.

18

LINCOLN

ROAD

18

358

SCALE OF FEET.

B E E T F I E L D S