

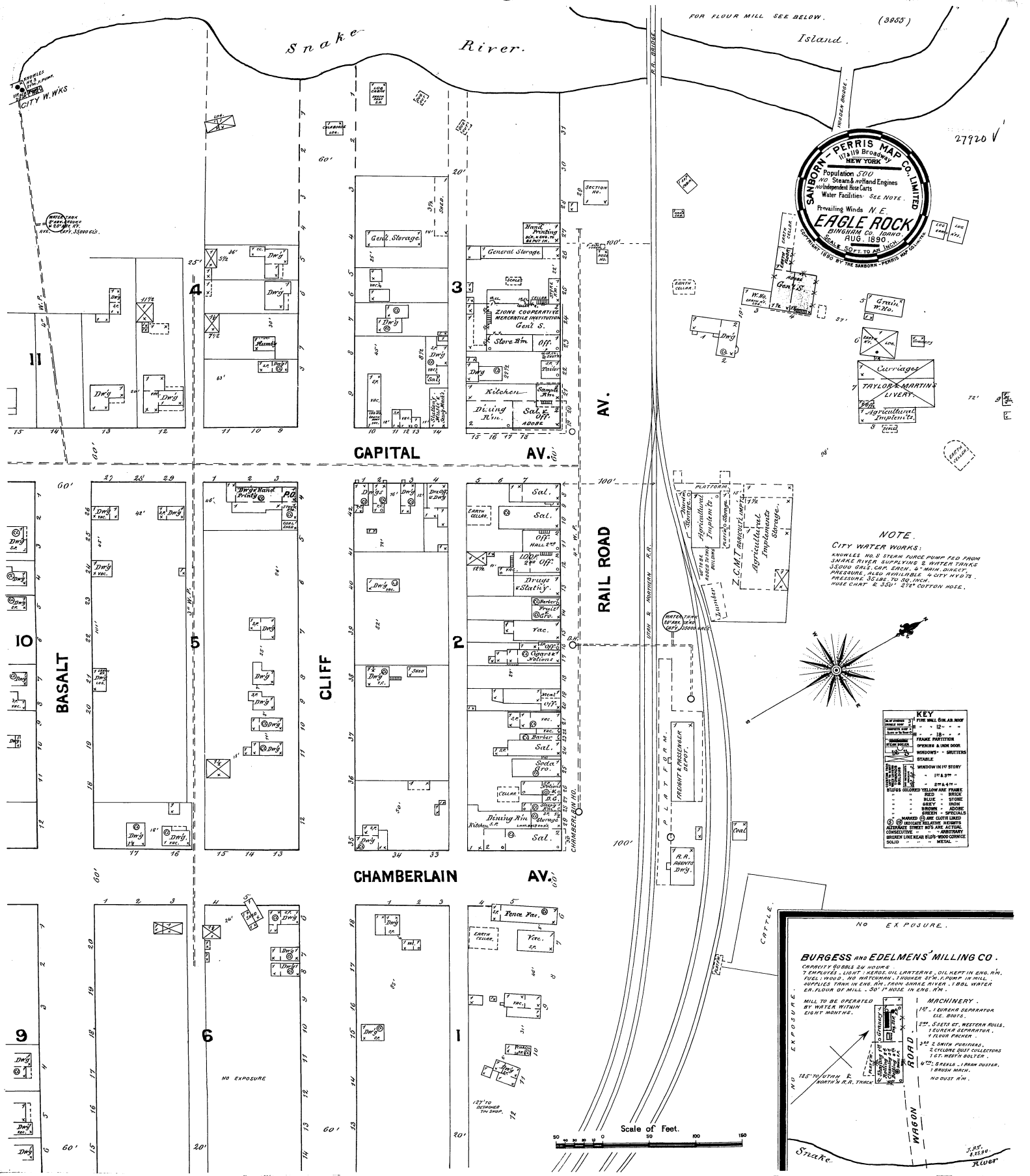
Snake River.

FOR FLOUR MILL SEE BELOW. (3955)



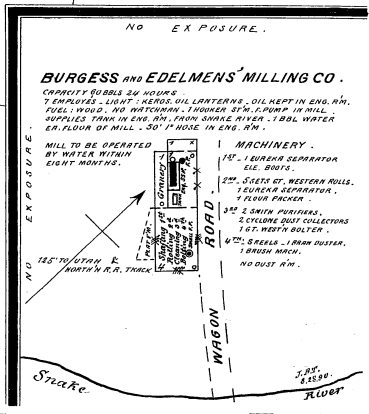
27920

CITY W. WKS. 1897, 35,000 PLS.



NOTE. CITY WATER WORKS: RANLES NO. 3 STEAM PUMP FED FROM SNAKE RIVER SUPPLYING 8 WATER TANKS 35000 GALS. CAP. EACH. 4" MAIN DUCT. PRESSURE, ALSO AVAILABLE 4 CITY HVTS. PRESSURE, 35 LBS. TO 50 INCH. HOSE CHPT. 2 5/8" 2 1/2" COTTON HOSE.

KEY table with symbols for various architectural features like windows, doors, and stairs.



BURGESS and EDELMENS' MILLING CO. CAPACITY 24000 BU. HOURS. 7 EMPLOYEES. LIGHT - KEROSENE OIL LANTERNS. OIL KEPT IN ENG. RM. FUEL - WOOD. NO WATERSIDE. 1 POWER STATION IN MILL. SUPPLIES TRAM IN ENG. RM. FROM SNAKE RIVER. 1000 GAL. WATER FOR FLOUR OF MILL. 50' P. HOSE IN ENG. RM.

Scale of Feet. 0 50 100 150